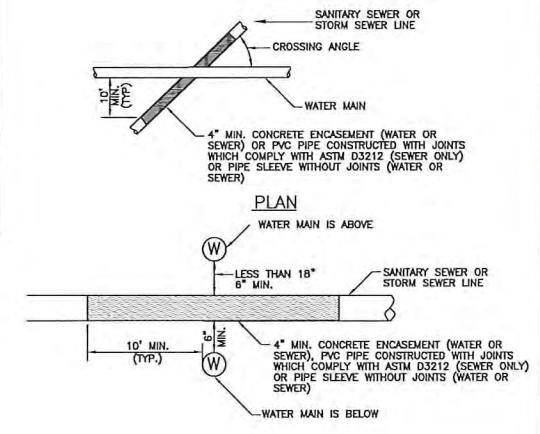
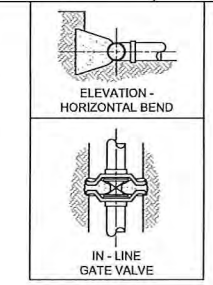


- NOTES:**
- TEST PRESSURE = 150 PSI, SOIL BEARING PRESSURE = 2000 LBS/S.F., USING HIGHER PRESSURE OR LOWER SOIL BEARING PRESSURE SHOULD BE ADJUSTED ACCORDINGLY, SUBJECT TO APPROVAL BY THE AGENCY ENGINEER.
 - THRUST BLOCKS TO BE CONSTRUCTED OF CLASS "B" CONCRETE, SUBJECT TO APPROVAL BY THE AGENCY ENGINEER.
 - THRUST BLOCKS TO BE PLACED AGAINST UNDISTURBED SOIL.
 - JOINTS, FACE OF PLUGS, NUTS AND BOLTS TO BE KEPT CLEAR OF CONCRETE AND MUST BE ABLE TO BE OPERATED WITHOUT DISTURBING THRUST BLOCK.
 - EXPOSED REBAR TO BE SHAPED WITH 90° BEND AT END, COATED WITH TWO COATS OF KOPPERS 505, TNEMEC 48-450, AMERON OR EQUAL 15 MILS EACH COAT.



PIPE DIA. (in.)	HORIZONTAL THRUST BLOCK BEARING AREA (S.F.)			
	TEE	TEE W/ CAP OR BLD. FL.	CROSS	END OF LINE
4 & 6	2.8	2.8	2.8	2.8
8	4.9	4.9	4.9	4.9
10	8.1	8.1	8.1	7.7

REBAR SIZES (EPOXY COATED OR WRAPPED)		
PIPE SIZE	Δ	REBAR
4 - 10	0 - 90°	#5



- NOTES:**
- WHERE THE WATER MAIN IS BELOW THE SEWER LINE, WHERE THE WATER MAIN IS LESS THAN 18 INCHES CLEAR ABOVE THE SEWER LINE OR WHERE THE HORIZONTAL SEPARATION CANNOT BE MAINTAINED, THE AREA OF CROSSING MUST BE CONSTRUCTED IN SUCH A MANNER THAT:
 - THE SEWER MAIN IS COMPOSED OF MATERIALS THAT COMPLY WITH STANDARD SPECIFICATIONS FOR PUBLIC WORKS CONSTRUCTION AND THE AMERICAN WATER WORKS ASSOCIATION STANDARDS;
 - THE SEWER MAIN CONSISTS OF PVC WHICH IS CONSTRUCTED WITH JOINTS THAT COMPLY WITH STANDARD D3212 OF THE AMERICAN SOCIETY FOR TESTING AND MATERIALS;
 - THE SEWER MAIN OR WATER MAIN IS TOTALLY ENCASED IN AT LEAST 4 INCHES OF CEMENT SLURRY FOR A DISTANCE OF AT LEAST 10 FEET ON EACH SIDE OF THE POINT OF CROSSING; OR
 - THE SEWER MAIN OR WATER MAIN IS INSTALLED IN A PIPE SLEEVE THAT EXTENDS, WITHOUT JOINTS, AT LEAST 10 FEET ON EACH SIDE OF THE POINT OF CROSSING.



PLACER COUNTY
TRPA
SUBMITTAL
DATE: 07-29-15



RECORD DRAWINGS

DATE _____ ENGINEER INITIAL _____

BROCKWAY CAMPGROUND
PLACER COUNTY, CALIFORNIA

SIERRA PACIFIC INDUSTRIES
PO BOX 496028 REDDING, CA.
(530) 378-8000

WELSH HAGEN ASSOCIATES
ENGINEERING - PLANNING - SURVEYING
5490 Longley Lane
Reno, Nevada 89511
(775) 853-7776
www.welshhagen.com

NOTE:
This drawing is the property of Welsh Hagen Associates, Inc., including all patented and patentable features, and/or confidential information. Its use is conditioned upon the user's agreement not to reproduce the drawing, in whole or part, nor the material described therein; nor to use the drawing for any purpose other than specifically permitted in writing by Welsh Hagen Associates, Inc.



PRELIMINARY NOT FOR CONSTRUCTION

UTILITY DETAILS (WATER)

Project: 404100
Drawn By: BAMB
Checked By: DLH
Scale: AS-NOTED
Date: JULY 2015
Sheet Number:

C9.1