

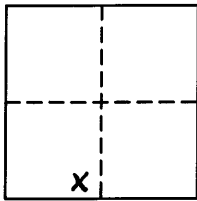
CORNER RECORD

Document Number 20130078

City of UNINCORPORATED TERRITORY

County of PLACER, California

Brief Legal Description PLAT OF TRACT NO. 915, VISTA CIELO, BB MAPS 12. P.C.R. LOTS 1-24



S29  
T12N  
R08E  
MDM

CORNER TYPE

Government Type  Control   
Meander  Property   
Rancho  Other   
Date of Survey 10/23/13

COORDINATES (Optional)

N. \_\_\_\_\_  
E. \_\_\_\_\_  
Zone \_\_\_\_\_ NAD27  NAD83   
NAD83 Epoch \_\_\_\_\_  
Vert. Datum: NGVD29  NAVD88   
Meas. Units: Metric  Imperial

Corner - Left as found  Found and tagged  Established  Reestablished  Rebuilt

Identification and type of corner found: Evidence used to identify or procedure used to establish or reestablish the corner:  
FOUND MONUMENTS IN RECORD POSITIONS AS INDICATED ON BB MAPS 12 AND NOTED ON SHEETS 2, 3, AND 4.  
SET MONUMENTS AT RECORD LOCATIONS PER BB MAPS 12 AS SHOWN ON SHEET 2, 3 AND 4.  
LOCATIONS WERE DETERMINED BY TIES TO ORIGINAL MONUMENTS.

A Description of the physical condition of the monument as found and as set or reset:  
SET 3/4" REBAR WITH CAP STAMPED L.S. 6815, UNLESS OTHERWISE NOTED, AS SHOWN SHEETS 2, 3, AND 4 IN  
RECORD POSITIONS PER BB MAPS 12

SURVEYOR'S STATEMENT

This Corner Record was prepared by me or under my direction in conformance with

the Land Surveyor's Act on October 23, 2013

Signed [Signature] P.L.S. or R.C.E. No. 6815



COUNTY SURVEYOR'S STATEMENT

This Corner Record was received \_\_\_\_\_

and examined and filed OCTOBER 29, 2013

Signed [Signature] P.L.S. or R.C.E. No. 6584

Title Deputy County Surveyor



County Surveyor's Comment \_\_\_\_\_

BOOK 16 OF CORNER RECORDS, PAGE 52

# CORNER RECORD

SEE SHEET 3

WETLAND PRESERVE  
ESMT LINE PER BB M 12

LOT 4  
BB M 12

LOT 3  
BB M 12

LOT 2  
BB M 12

LOT A  
BB M 12

CENTERLINE OF 20' PRIVATE  
WATERLINE ESMT PER BB M 12

CENTERLINE OF 20' PCWA  
ESMT PER BB M 12

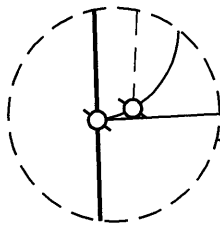
LOT 1  
BB M 12

VISTA CIELO COURT

POWERHOUSE ROAD



SCALE: 1" = 160'



DETAIL  
NOT TO SCALE

## LEGEND

- SET 3/4" REBAR TAGGED LS 6815
- FOUND MONUMENT PER BB M 12
- ⊗ FOUND 1" IP TAGGED LS 4715
- ⊙ FOUND 2" IP, NO TAG.
- ⊠ SET 2" BRASS CAP STAMPED LS 6815 IN MONUMENT WELL, AT RECORD LOCATION PER BB MAPS 12



**WOOD RODGERS**  
ENGINEERING • MAPPING • PLANNING • SURVEYING

3301 C St., Bldg. 100-B Tel 916.341.7760  
Sacramento, CA 95816 Fax 916.341.7767

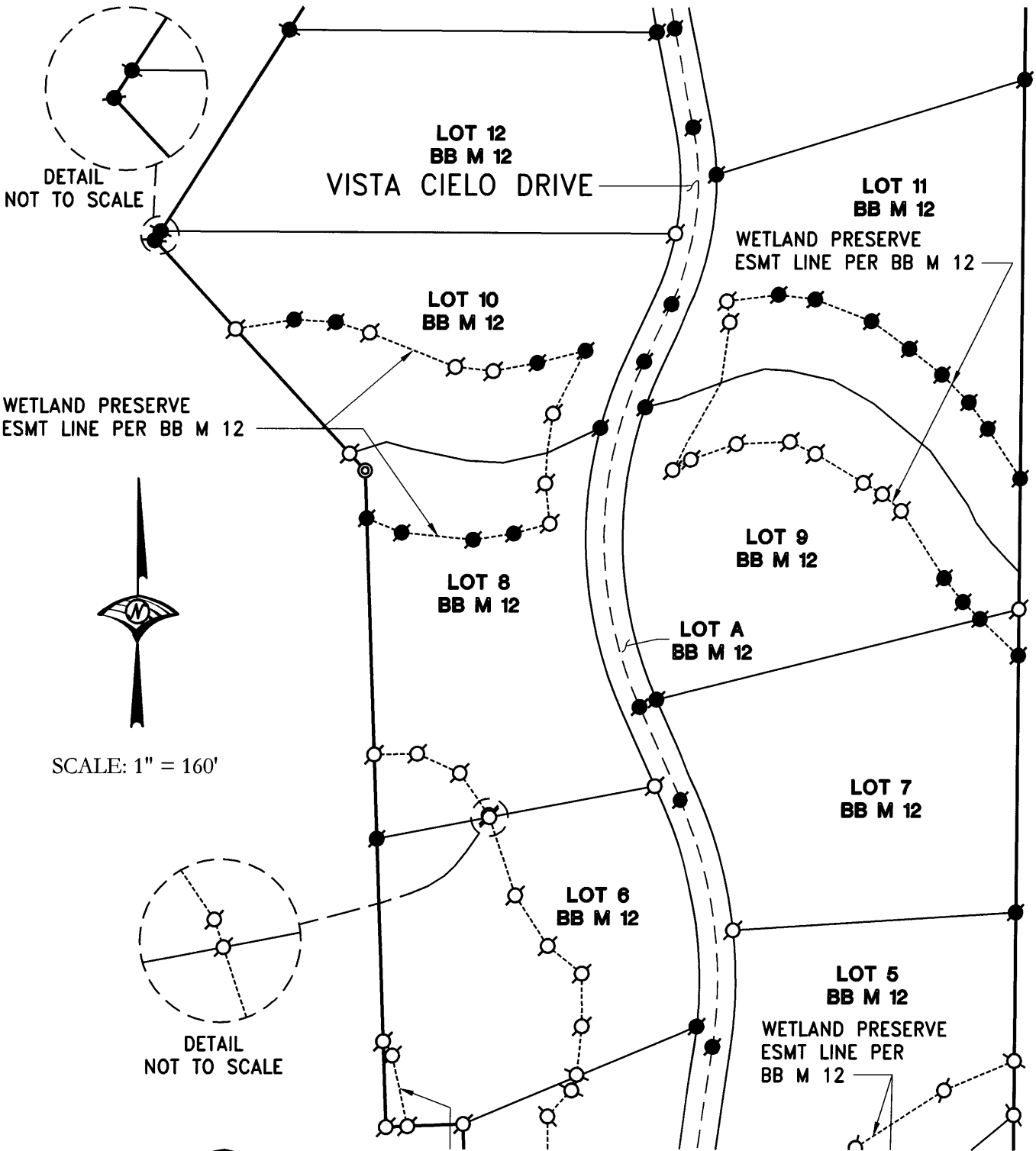
SHEET 2 OF 6

BOOK 16 CORNER RECORDS, PAGE 52

# CORNER RECORD

SEE SHEET 4

SEE SHEET 6

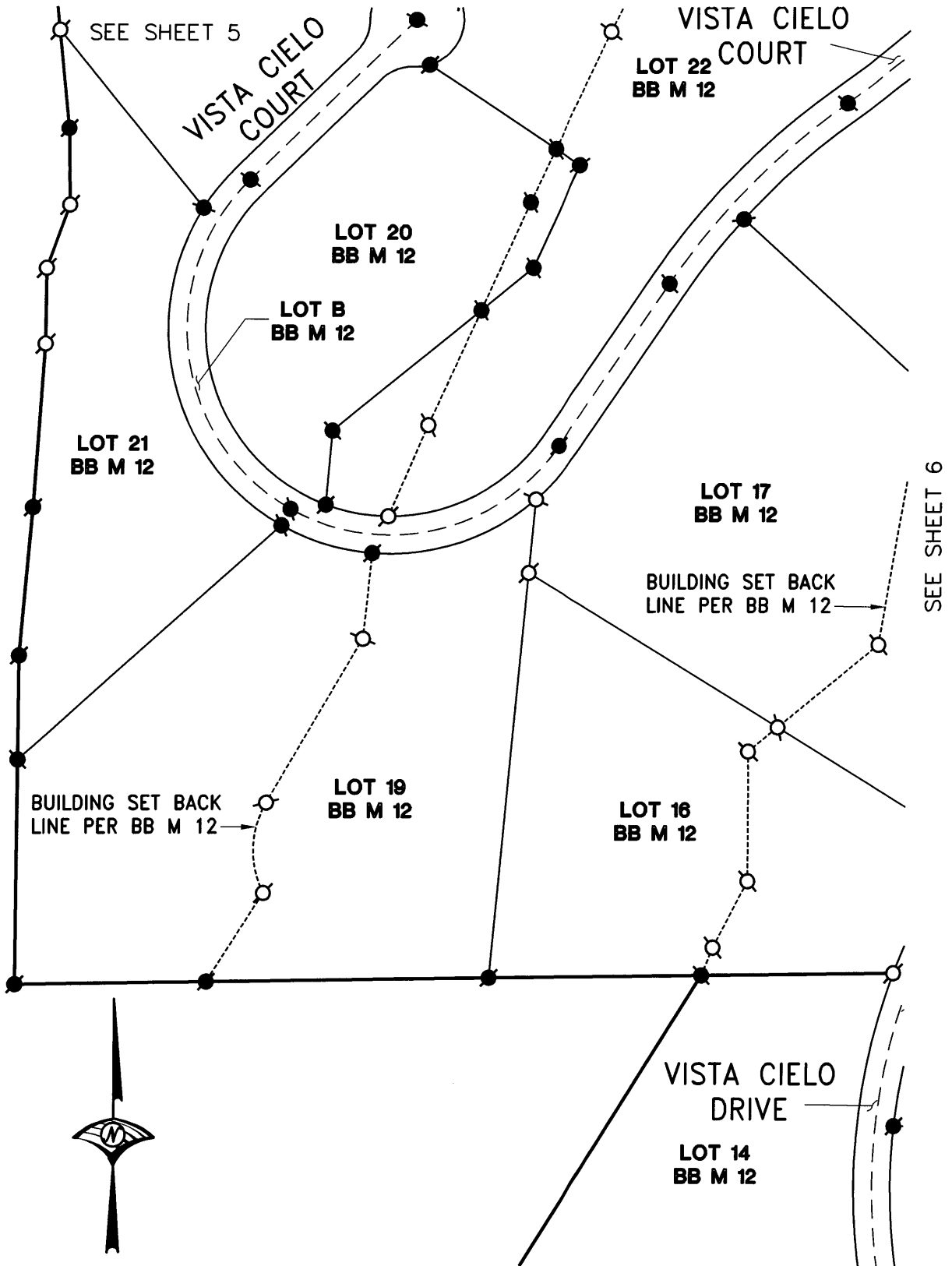


BOOK 16 CORNER RECORDS, PAGE 52

SEE SHEET 2

**WOOD RODGERS**  
ENGINEERING • MAPPING • PLANNING • SURVEYING

3301 C St., Bldg. 100-B Tel 916.341.7760  
Sacramento, CA 95816 Fax 916.341.7767



Book 16 CORNER RECORDS, PAGE 52

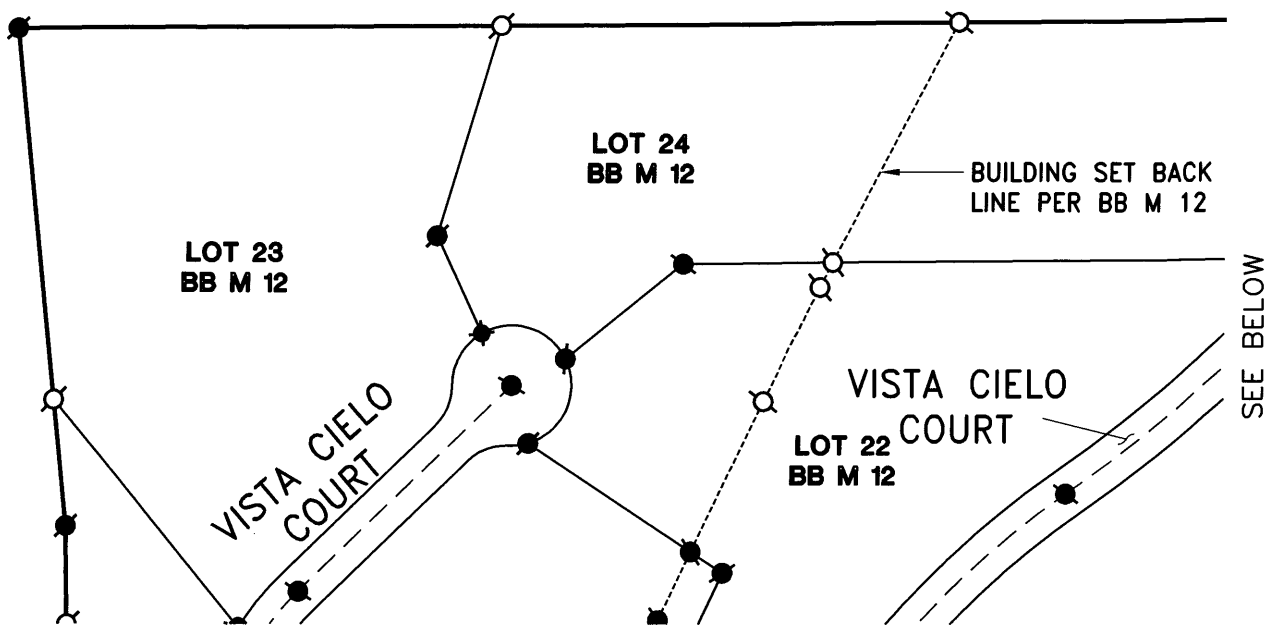


**WOOD RODGERS**  
 ENGINEERING • MAPPING • PLANNING • SURVEYING

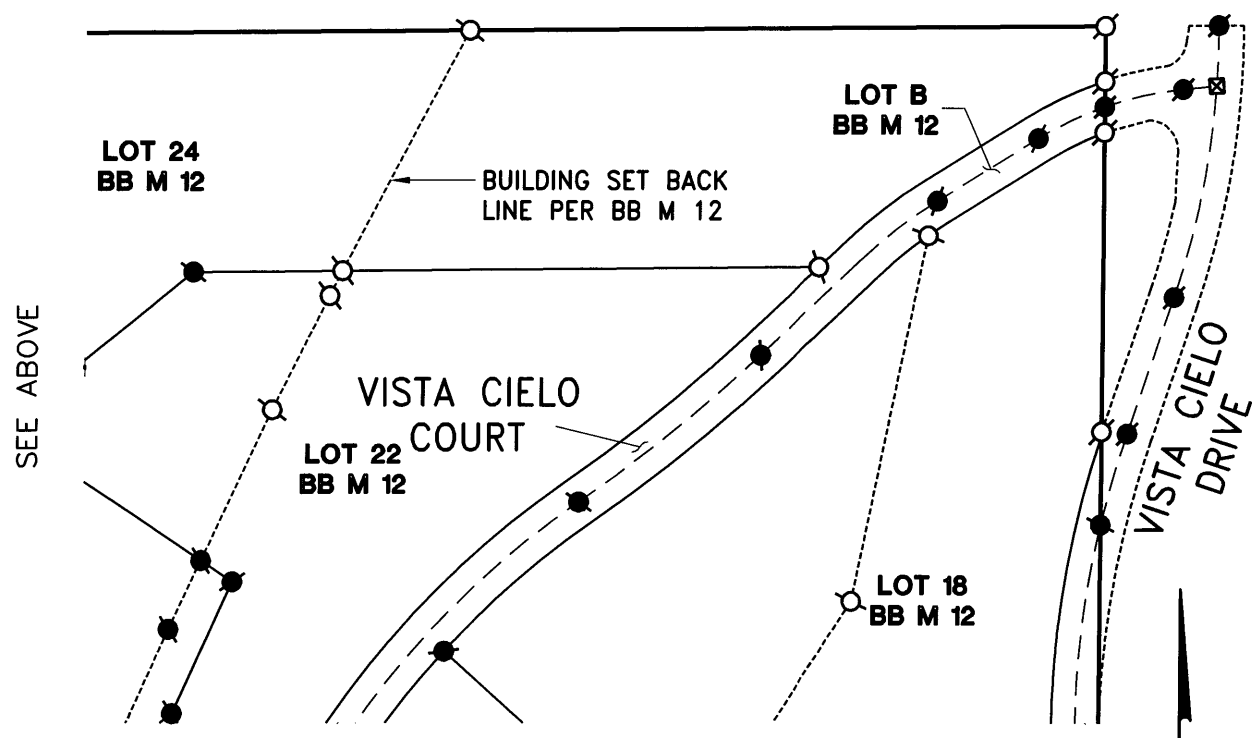
3301 C St., Bldg. 100-B Tel 916.341.7760  
 Sacramento, CA 95816 Fax 916.341.7767

SCALE: 1" = 160'

**CORNER RECORD**



SEE SHEET 4



SEE SHEET 6



BOOK 16 CORNER RECORDS, PAGE 52



**WOOD RODGERS**  
ENGINEERING • MAPPING • PLANNING • SURVEYING

3301 C St., Bldg. 100-B Tel 916.341.7760  
Sacramento, CA 95816 Fax 916.341.7767

SCALE: 1" = 160'

**CORNER RECORD**

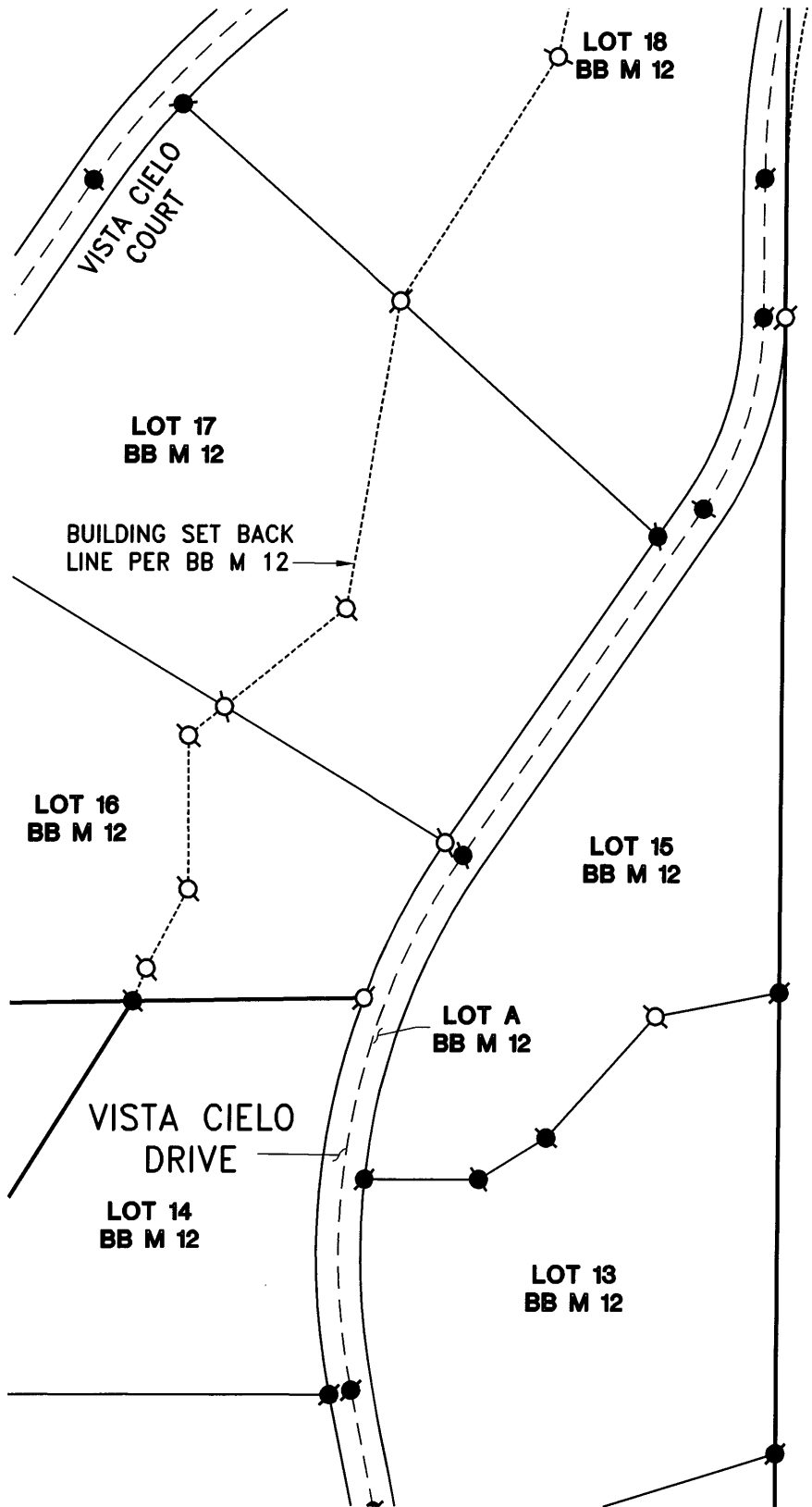
# CORNER RECORD

SEE SHEET 5



SCALE: 1" = 160'

SEE SHEET 4



BOOK 16 CORNER RECORDS, PAGE 52

SEE SHEET 3



**WOOD RODGERS**  
ENGINEERING • MAPPING • PLANNING • SURVEYING

3301 C St., Bldg. 100-B Tel 916.341.7760  
Sacramento, CA 95816 Fax 916.341.7767