

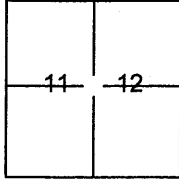
CORNER RECORD

Document Number 20130056

City of UNINCORPORATED TERRITORY

County of Placer, California

Brief Legal Description Quarter Section corner common to Sections 11, and 12, Township 10 North, Range 7 East, M.D.M near the intersection of Eureka Rd. and Auburn Folsom Rd. shown on Book 6 of Surveys, page 24



S.11,12
T.10N.
R.7E.
M.D.M.

CORNER TYPE

Government Corner Control
 Meander Property
 Rancho Other

Date of Survey July 11, 2013

COORDINATES(Optional)

N. See Sheet 2
 E. See Sheet 2
 Zone 2 NAD27 NAD83
 NAD83 Epoch 1991.35
 Elev. _____
 Vert. Datum: NGVD29 NADV88
 Meas. Units: Metric Imperial

Corner - Left as found Found and tagged Established Reestablished Rebuilt

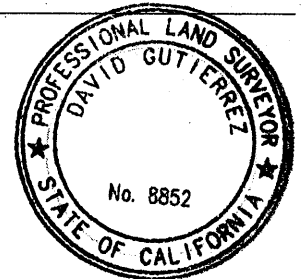
Identification and type of corner found: Evidence used to identify or procedure used to establish or reestablish the corner:
 ●- FOUND MONUMENT AS SHOWN HEREON per 6 RS 24. Established reference points as shown hereon prior to construction of DPW/ Auburn Folsom Road North Phase Project

A description of the physical condition of the monument as found and as set or reset: _____
 see reverse for description of found monuments and set reference points

SURVEYOR'S STATEMENT

This Corner Record was prepared by me or under my direction in conformance with the Land Surveyor's Act on September 3, 2013

Signed [Signature] P.L.S. or R.C.E. No.: 8852



COUNTY SURVEYOR'S STATEMENT

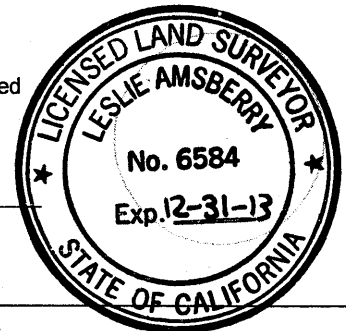
This Corner Record was received _____ and examined _____

and filed September 16, 2013

Signed [Signature] P.L.S. or R.C.E. No.: 6584

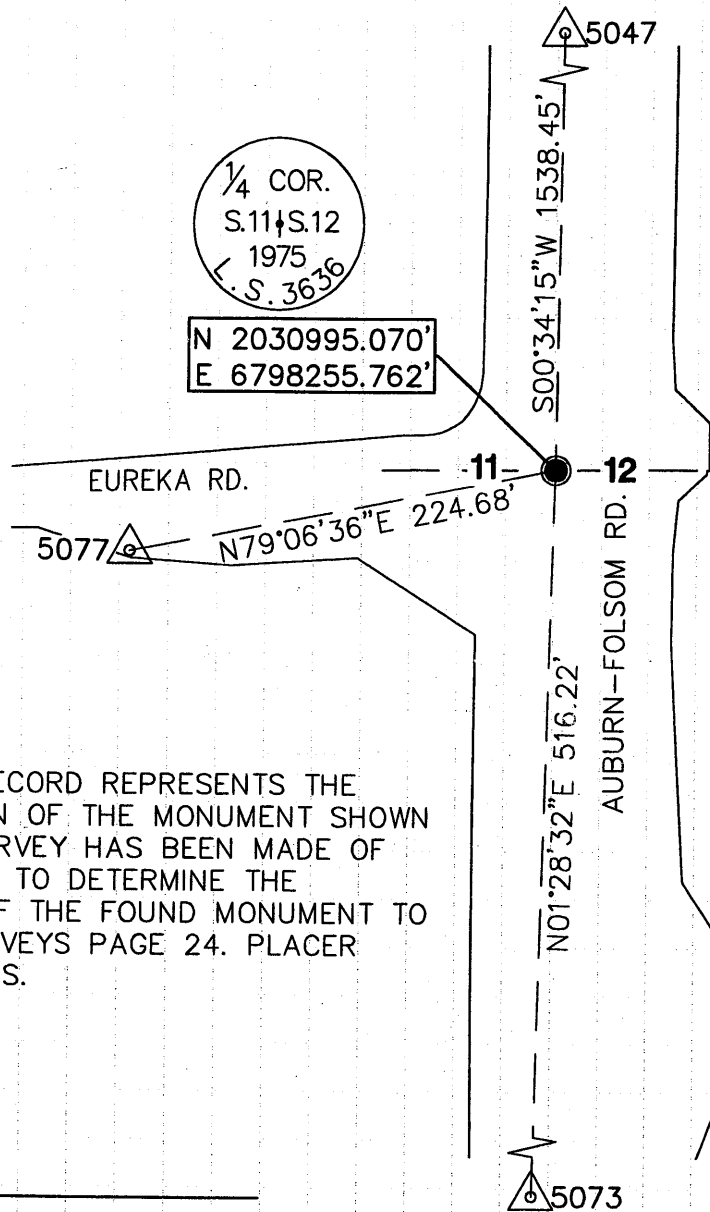
Title Deputy County Surveyor

County Surveyor's Comment _____



BOOK 16 CORNER RECORDS, PAGE 34

DATE: 9.4.2013
 JOB: 2290.005



NOTE:
 THIS CORNER RECORD REPRESENTS THE FOUND LOCATION OF THE MONUMENT SHOWN HEREON. NO SURVEY HAS BEEN MADE OF SAID MONUMENT TO DETERMINE THE RELATIONSHIP OF THE FOUND MONUMENT TO BOOK 6 OF SURVEYS PAGE 24. PLACER COUNTY RECORDS.

LEGEND

- FOUND 1.5" COPPERWELD STAMPED LS 3636 1975 PER 6/SURVEYS/24
- △ SET REFERENCE POINTS AS SHOWN BELOW

PROJECT CONTROL			
POINT NO.	NORTHING	EASTING	DESCRIPTION
5047	2032533.443'	6798271.092'	PK NAIL & SHINER NO MARKING
5073	2030479.023'	6798242.468'	3/4" IP & PLUG, ESP CONTROL PT
5077	2030952.623'	6798035.129'	80D NAIL

SCALE:
 1"=100'

COORDINATES BASED ON NAD83 EPOCH (1991.35)
 CCS ZONE 2. REFERENCED NGS PID AC9242.
 COORDINATES AND DISTANCES ARE GRID. TO
 CONVERT TO GROUND, DIVIDE DISTANCES BY A
 COMBINED SCALE FACTOR OF .999918515 DERIVED
 FROM AN AVERAGE PROJECT ELEVATION OF
 398.2'. UNITS ARE US SURVEY FEET.

905 Sutter St. Ste 200 Folsom CA 95630
 (916) 366-3040 Fax (916) 366-3303

R. E. Y. ENGINEERS, Inc.
 Civil Engineers / Land Surveyors

