

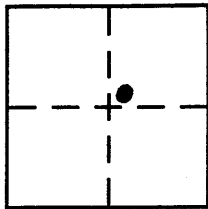
**CORNER RECORD**

Document Number 20130020

City of UNINCORPORATED AREA

County of PLACER, California

Brief Legal Description LOT 93 SERENE LAKES UNIT No's 5 & 6  
BOOK "J" OF MAPS PAGE 67 P.C.R.



**CORNER TYPE**

SEC. 27 Government Corner  Control   
 T. 17 N. Meander  Property   
 R. 14 E. Rancho  Other   
 M.D.M Date of Survey 8/26/12

**COORDINATES (Optional)**

N. \_\_\_\_\_  
 E. \_\_\_\_\_  
 Zone \_\_\_\_\_ NAD27  NAD83   
 NAD83 Epoch \_\_\_\_\_  
 Elev. \_\_\_\_\_  
 Vert. Datum: NGVD29  NAVD88   
 Meas. Units: Metric  Imperial

Corner - Left as found  Found and tagged  Established  Reestablished  Rebuilt

Identification and type of corner found: Evidence used to identify or procedure used to establish or reestablish the corner:

● = FOUND 5/8" REBAR NO TAG, BELIEVE TO BE ORIGINAL  
 ● = FOUND RAILROAD SPIKE PER J/MAPS/67 P.C.R.

A description of the physical condition of the monument as found and as set or reset:

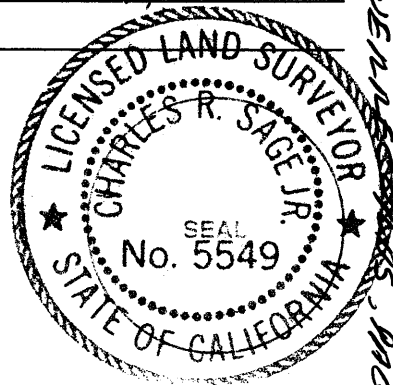
○ = SET BATHEY MONUMENT (T-BAR) w/ NAIL TAG L.S. 5549  
 INSIDE ELECTRIC VAULT  
 X = SET CHISEL CROSS ON 5' DIAMETER BOULDER, 3'  
 ABOVE GROUND.

JN: 12052

**SURVEYOR'S STATEMENT**

This Corner Record was prepared by me or under my direction in conformance with the Land Surveyor's Act on AUGUST 29 2012

Signed Charles R. Sage P.L.S or R.C.E. No. L.S. 5549  
EXP. 6/30/13



**COUNTY SURVEYOR'S STATEMENT**

This Corner Record was received \_\_\_\_\_

and examined and filed July 24-2013

Signed Leslie Amsberry P.L.S or R.C.E. No. 6584

Title Deputy County Surveyor

County Surveyor's Comment \_\_\_\_\_

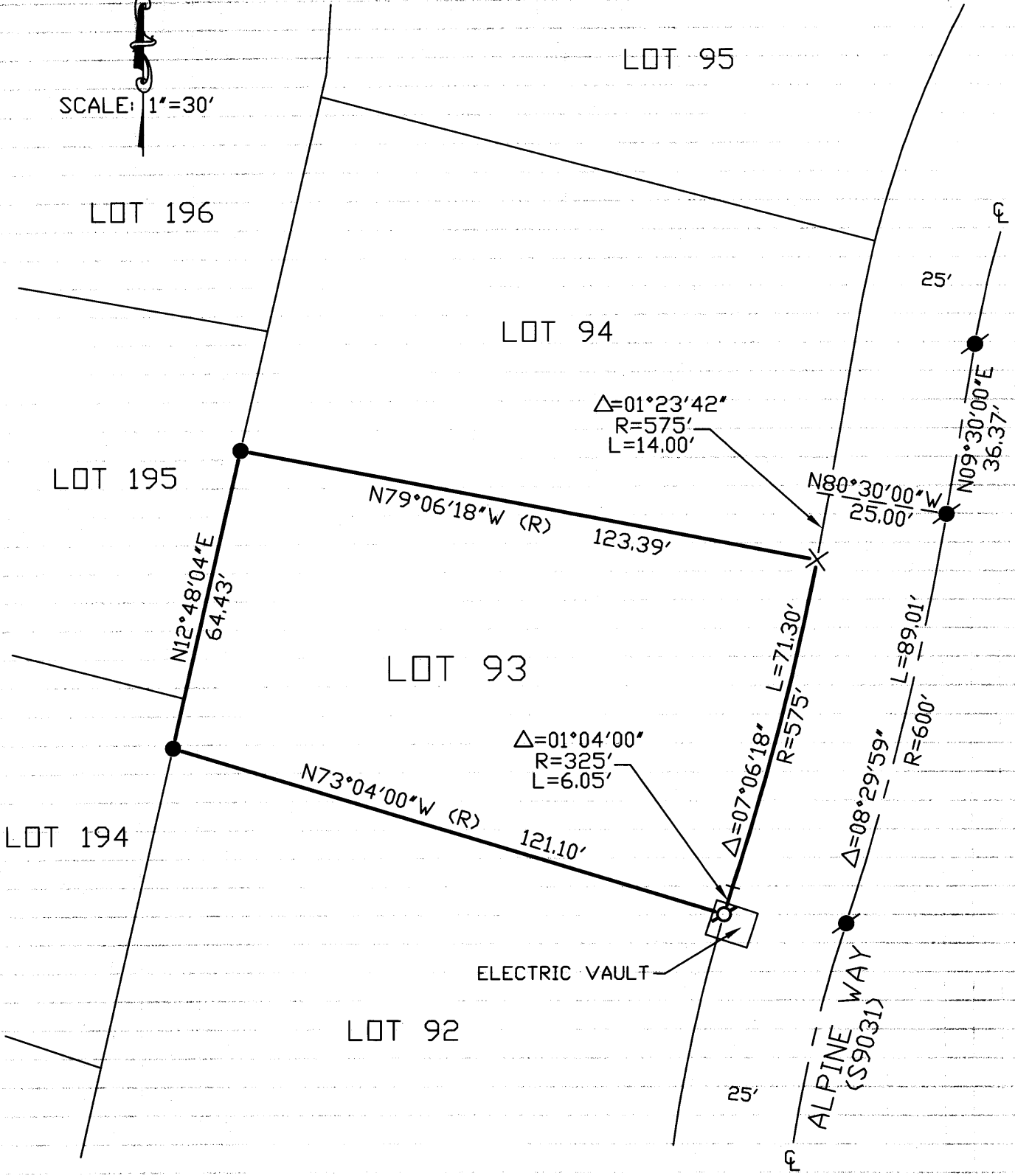


BOOK 16 CORNER RECORDS PAGE 28

NOTE: THE BEARINGS AND DISTANCES SHOWN ARE RECORD PER J/MAPS/67 P.C.R.  
 NO MATERIAL DISCREPANCIES WITH RECORD INFORMATION WERE FOUND.



SCALE: 1"=30'



BOOK 16 CORNER RECORDS PAGE 28