

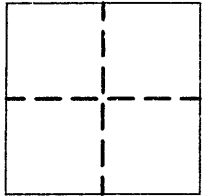
CORNER RECORD

COUNTY OF PLACER, CALIFORNIA

City of _____

Document Number 20130014

Brief Legal Description CENTERLINE MONUMENTATION SHOWN ON BOOK O OF MAPS, AT PAGE 34 O.R.P.C.



POR.
SECTION
17,
T.10N.,
R.7E.
M.D.M.

CORNER TYPE

Government Corner Control
Meander Property
Rancho other
Date of Survey JUNE 4, 2012

CORNER TYPE
(optional)

N. _____
E. _____
Zone _____ Datum _____
Elev. _____

Corner - Left as Found Found and Tagged Established Reestablished Rebuilt

Identification and type of corner found: Evidence used to identify or procedure used to establish or reestablish corner:

FOUND RAILROAD SPIKES ON CENTERLINE AS SHOWN PER TRACT # 592, WOODBRIDGE RANCH UNIT NO. 4A, BOOK O OF MAPS, PAGE 34 O.R.P.C. FROM FOUND MONUMENTS, ESTABLISHED REFERENCE POINTS PRIOR TO ASPHALT OVERLAY.

A description of the physical condition of the monument as found and as set or reset:

SEE REVERSE FOR DESCRIPTION OF THE FOUND MONUMENTS PER O MAPS 34. SET CHISELED CROSSES ON TOP OF CURBS.

SURVEYOR'S STATEMENT

This Corner Record was prepared by me or under my direction in conformance with the Land

Surveyors' Act on APRIL 2 20 13

Signed John Mc Donough L.S. or R.C.E. Number 7951



COUNTY SURVEYOR'S STATEMENT

This Corner Record was received _____ 20 _____ and examined

and filed April 23, 2013 20 _____

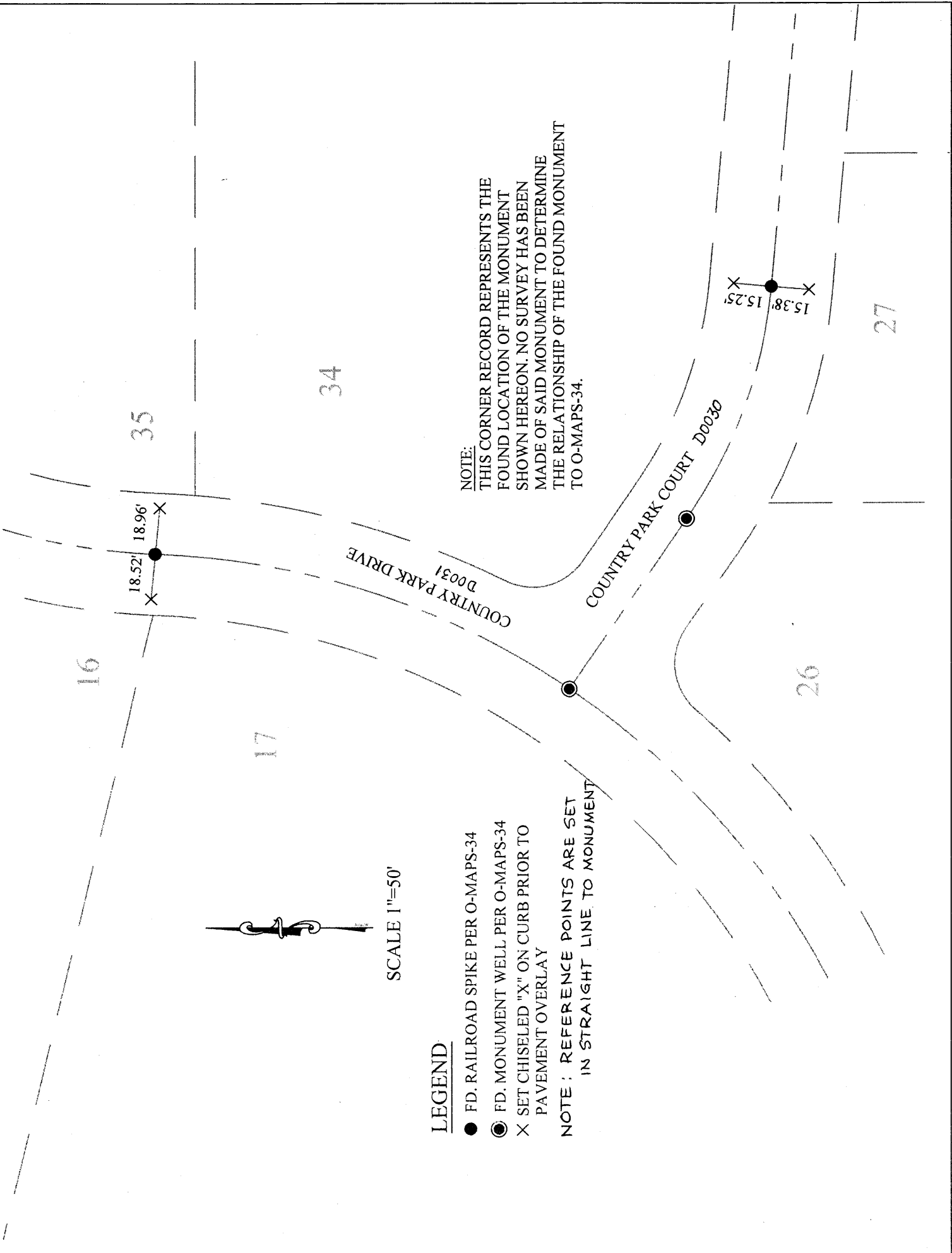
Signed Leslie Amberry Title Deputy County Surveyor



County Surveyor's Comment:

xx

BOOK 16 OF CORNER RECORDS, PAGE 11



LEGEND

- FD. RAILROAD SPIKE PER O-MAPS-34
- ⊙ FD. MONUMENT WELL PER O-MAPS-34
- X SET CHISELED "X" ON CURB PRIOR TO PAVEMENT OVERLAY

NOTE: REFERENCE POINTS ARE SET IN STRAIGHT LINE TO MONUMENT

NOTE: THIS CORNER RECORD REPRESENTS THE FOUND LOCATION OF THE MONUMENT SHOWN HEREON. NO SURVEY HAS BEEN MADE OF SAID MONUMENT TO DETERMINE THE RELATIONSHIP OF THE FOUND MONUMENT TO O-MAPS-34.