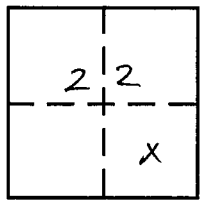


CORNER RECORD

COUNTY OF PLACER, CALIFORNIA

City of COLFAX Document Number 20130005
Brief Legal Description PARCEL "D" BOOK 7 PARCEL MAPS PAGE 80 PLACER COUNTY RECORDS



T15N. R9E.
MOB 1/4 M

CORNER TYPE

- Government Corner [] Control []
Meander [] Property [X]
Rancho [] Other []
Date of Survey FEBRUARY 13, 2013

COORDINATES (Optional)

N.
E.
Zone Datum
Elev.

Corner — Left as found [] Found and tagged [] Established [] Reestablished [] Rebuilt [X]

Identification and type of corner found: Evidence used to identify or procedure used to establish or reestablish corner:

USED 2 FOUND MONUMENTS FROM 7PM 80, THE SOUTHERLY QUARTER CORNER OF SECTION 22 1/2 THE NORTHEAST CORNER OF PARCEL "D" 7 PM 80 (SEE SKETCH ON REVERSE)

A description of the physical condition of the monument as found and as set or reset: SET 3/4" REBAR WITH PLASTIC CAP LS 8446 AT 2 RECORD CORNER POSITIONS PER 7 PM 80 (SEE SKETCH)

SURVEYOR'S STATEMENT

This Corner Record was prepared by me or under my direction in conformance with the Land

Surveyors' Act on FEBRUARY 18 2013.

Signed [Signature] L.S. or R.C.E. Number 8446

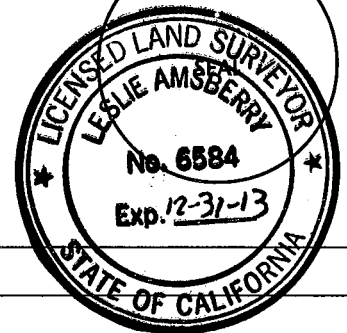
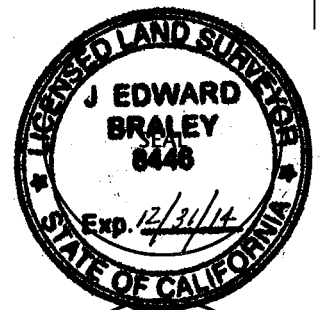
COUNTY SURVEYOR'S STATEMENT

This Corner Record was received _____ 20 _____ and examined

and filed MARCH 11, 2013 20 _____.

Signed [Signature] Title Deputy

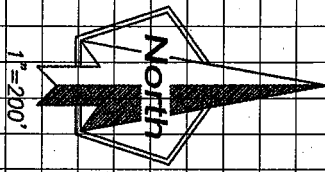
County Surveyor's Comment



BOOK 16 CORNER RECORDS PAGE 2

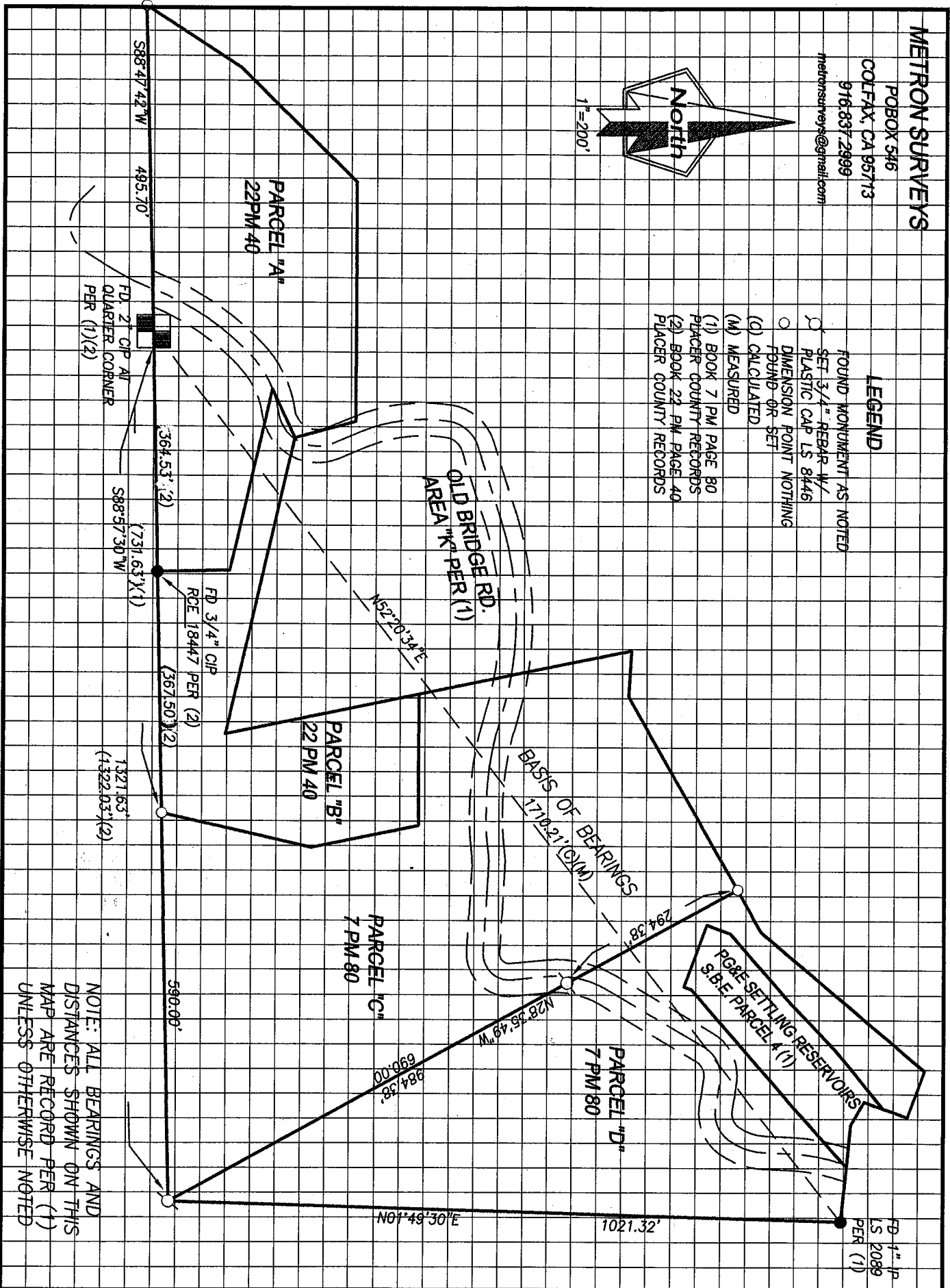
METRON SURVEYS

PO BOX 546
 COLFAX, CA 95713
 916-837-2999
 metronsurveys@gmail.com



LEGEND

- FOUND MONUMENT AS NOTED
- SET 3/4" REBAR W/ PLASTIC CAP LS 8446
- DIMENSION POINT NOTHING FOUND-OR SET
- (C) CALCULATED
- (M) MEASURED
- (1) BOOK 7 PM PAGE 80 PLACER COUNTY RECORDS
- (2) BOOK 22 PM PAGE 40 PLACER COUNTY RECORDS



NOTE: ALL BEARINGS AND DISTANCES SHOWN ON THIS MAP ARE RECORD PER (1) UNLESS OTHERWISE NOTED