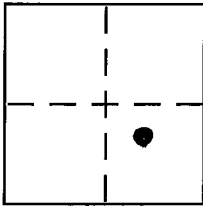


CORNER RECORD

Document Number 20130039

City of UNINCORPORATED AREA County of PLACER, California

Brief Legal Description LOT 23 THE OVERLOOK AT NORTHSTAR
BOOK "X" OF MAPS PAGE 81 P.C.O.R.



SEC. 31
T. 17 N.
R. 17 E.
M.D.M.

CORNER TYPE

Government Corner Control
Meander Property
Rancho Other
Date of Survey 4/08/13

COORDINATES (Optional)

N. _____
E. _____
Zone _____ NAD27 NAD83
NAD83 Epoch _____
Elev. _____
Vert. Datum: NGVD29 NAVD88
Meas. Units: Metric Imperial

Corner - Left as found Found and tagged Established Reestablished Rebuilt

Identification and type of corner found: Evidence used to identify or procedure used to establish or reestablish the corner:
● = FOUND 5/8" REBAR W/ PLASTIC CAP L.S. 3422 PER X/MAPS/81 P.C.O.R.

A description of the physical condition of the monument as found and as set or reset:
○ = SET BATHEY MONUMENT (T-BAR) W/ NAIL & TAG L.S. 8628

JN: 13011

SURVEYOR'S STATEMENT

This Corner Record was prepared by me or under my direction in conformance with the Land Surveyor's Act on APRIL 23, 2013

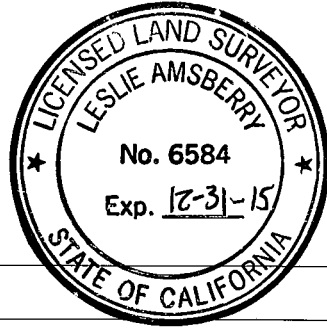
Signed [Signature] P.L.S or R.C.E. No. L.S. 8628
LIC. EXPIRES 12/31/15



COUNTY SURVEYOR'S STATEMENT

This Corner Record was received _____ and examined and filed JANUARY 29 2014

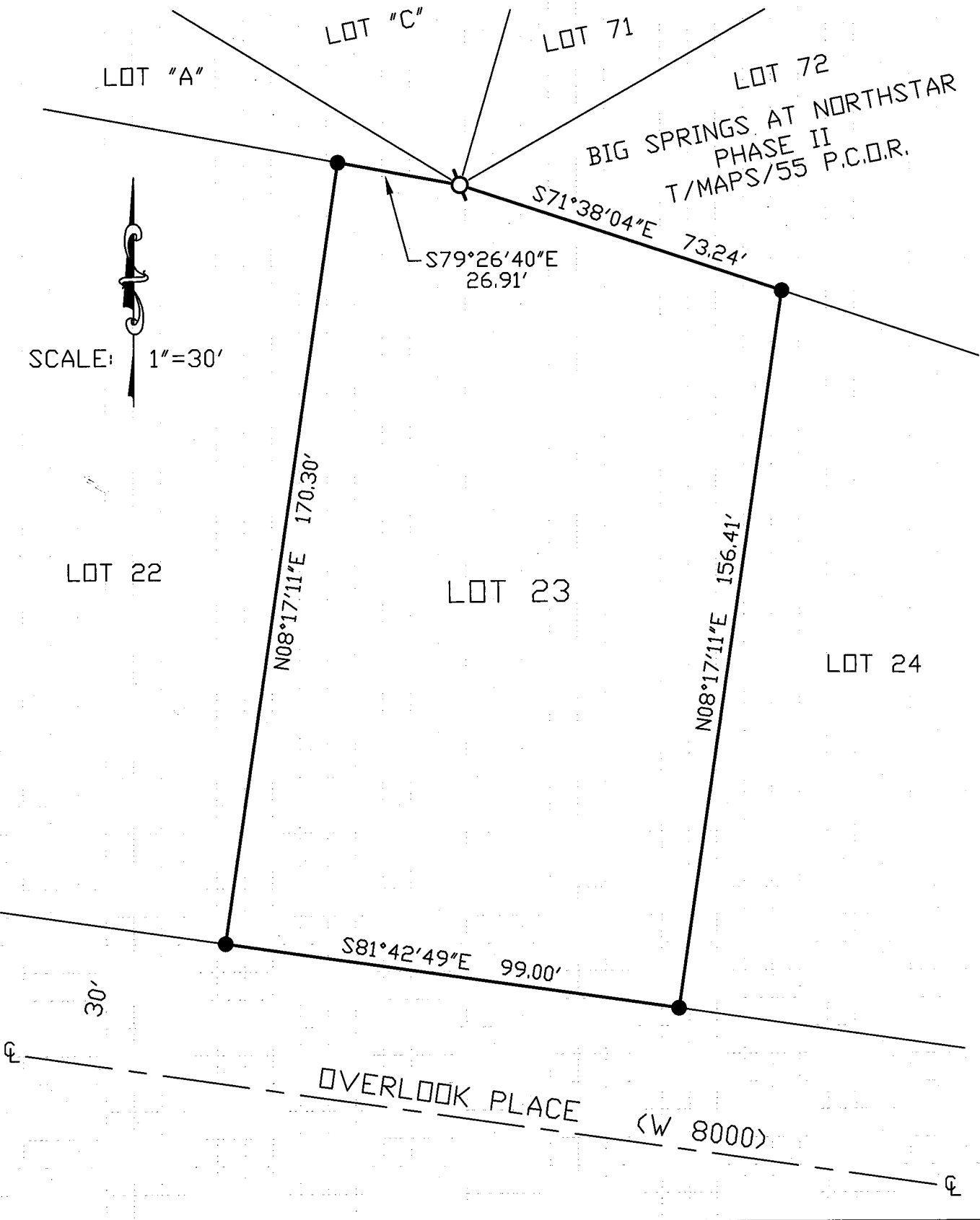
Signed [Signature] P.L.S or R.C.E. No. 6584
Title County Surveyor



County Surveyor's Comment _____

BOOK 16 CORNER RECORDS PAGE 67

NOTE: THE BEARINGS AND DISTANCES SHOWN ARE RECORD PER X/MAPS/81 P.C.D.R.
NO MATERIAL DISCREPANCIES WITH RECORD INFORMATION WERE FOUND.



B00016 CORNER RECORDS, PAGE 67