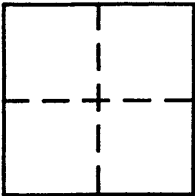


CORNER RECORD

COUNTY OF PLACER, CALIFORNIA

City of MEADOW VISTA (UNINCORPORATED) Document Number 20120086

Brief Legal Description PTN SEC. 31, T14N R9E M.D.M. PCL 1 BK 28 PM 46



S 31  
T14N  
R 9 E

CORNER TYPE

Government Corner  Control   
Meander  Property   
Rancho  Other   
Date of Survey 11-2-12

COORDINATES  
(Optional)

N. \_\_\_\_\_  
E. \_\_\_\_\_  
Zone \_\_\_\_\_ Datum \_\_\_\_\_  
Elev. \_\_\_\_\_

Corner — Left as found  Found and tagged  Established  Reestablished  Rebuilt

Identification and type of corner found: Evidence used to identify or procedure used to establish or reestablish corner:

FOUND MONUMENTS FROM 28-PM-46 AND USED THEM  
TO RE ESTABLISH MISSING CORNER SHOWN AS SET

A description of the physical condition of the monument as found and as set or reset:

RESET MISSING CORNER W/ 3/4" REBAR W/ PLASTIC CAP  
STAMPED RLB 29265

SURVEYOR'S STATEMENT

This Corner Record was prepared by me or under my direction in conformance with the Land

Surveyors' Act on Nov 9 20 12.

Signed R.G. Hillman L.S. or R.C.E. Number RLB 29265

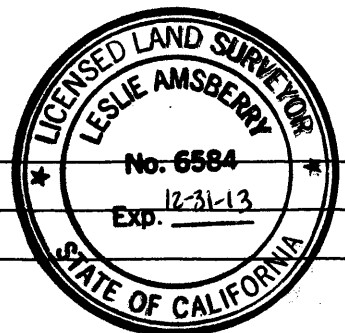
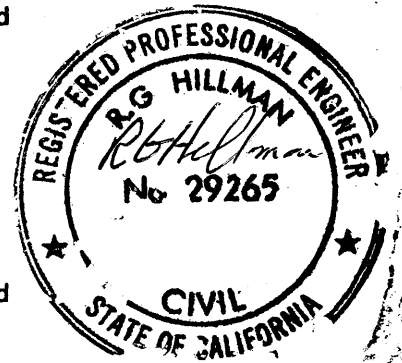
COUNTY SURVEYOR'S STATEMENT

This Corner Record was received \_\_\_\_\_ 20 \_\_\_\_\_ and examined

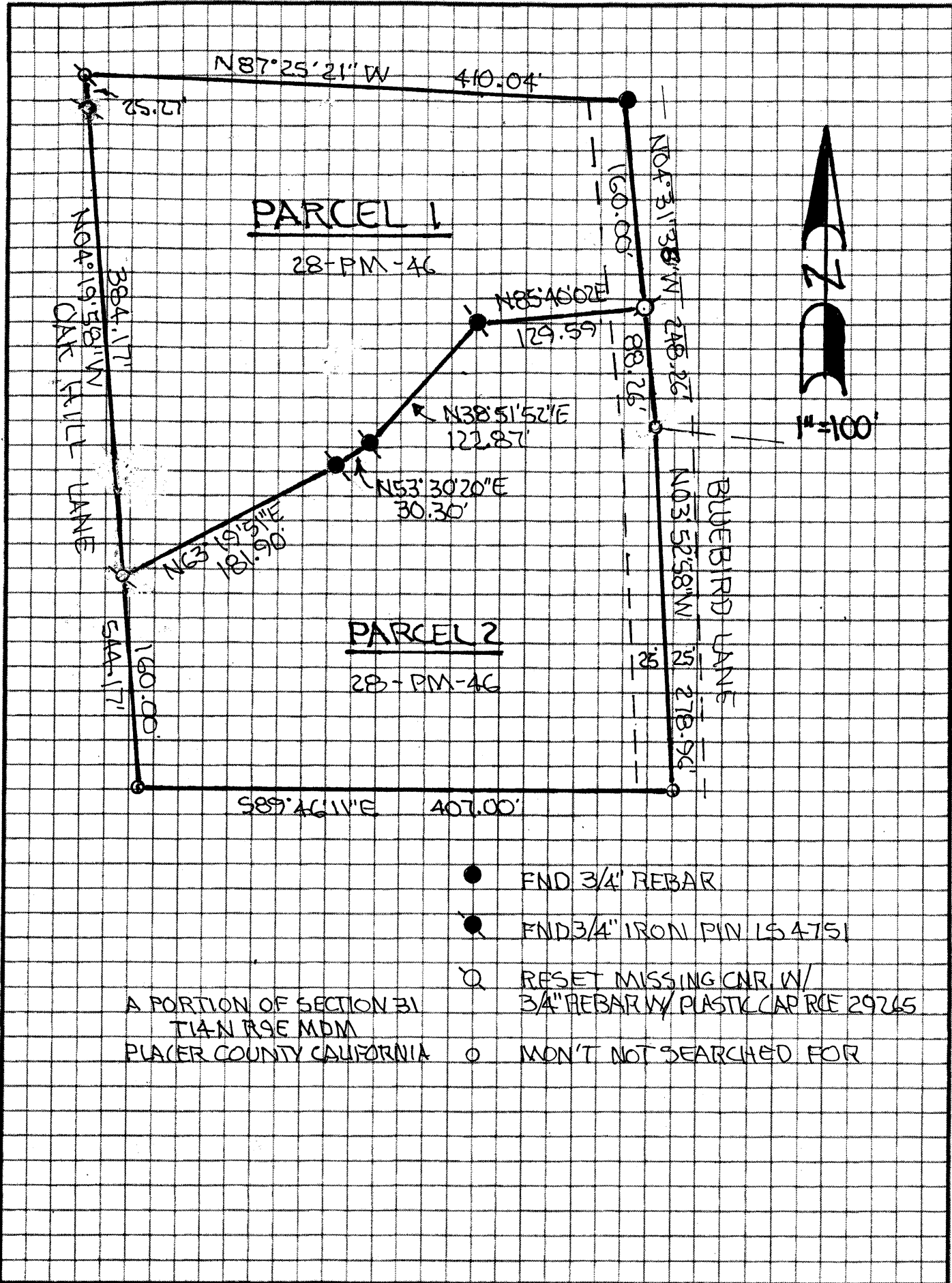
and filed DECEMBER 19 20 12.

Signed Leslie Amshery Title Deputy County Surveyor

County Surveyor's Comment \_\_\_\_\_



BOOK 15 CORNER RECORDS PAGE 83



A PORTION OF SECTION 31  
T14N R9E MDM  
PLACER COUNTY CALIFORNIA

- END 3/4" REBAR
- END 3/4" IRON PIN LS 4751
- RESET MISSING CNR W/  
3/4" REBAR W/ PLASTIC CAP RCE 29265
- MON'T NOT SEARCHED FOR