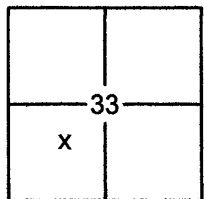


# CORNER RECORD

Document Number 20120023

City of \_\_\_\_\_

County of PLACER, CaliforniaBrief Legal Description LOT 208, DOLLAR POINT UNIT NO. 4 SUBDIVISION, H/MAPS/40 O.R.P.C.

SEC. 33  
T. 16 N.  
R. 17 E.  
M.D.B. & M.

## CORNER TYPE

Government Corner  Control  
 Meander  Property  
 Rancho  Other  
 Date of Survey 10/1999

## COORDINATES (OPTIONAL)

N. \_\_\_\_\_  
 E. \_\_\_\_\_  
 Zone \_\_\_\_\_ Datum \_\_\_\_\_  
 Elev. \_\_\_\_\_  
 Vert. Datum: NGVD29  NAVD88   
 Meas. Units: Metric  Imperial

CORNER- Left as Found  Found and Tagged  Established  Reestablished  Rebuilt

Identification and type of corner found: Evidence used to identify or procedure used to establish or reestablish the corner:

USED RECORD DIMENSIONS AND FOUND MONUMENTS PER H/MAPS/40 O.R.P.C. AND FOUND MONUMENTS IN RECORD POSITION, NOT OF RECORD, TO REESTABLISH THE MISSING CORNERS OF LOT 208, WITH A PRORATION BETWEEN FOUND MONUMENTS, AS SHOWN ON THE ACCOMPANYING PLAT.

A description of the physical condition of the monument as found and as set or reset:

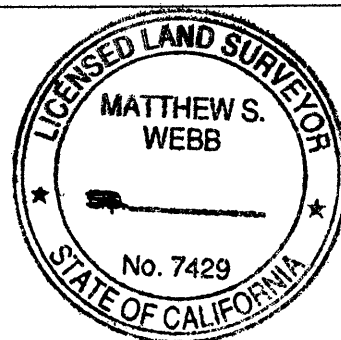
SET 5/8" REBAR WITH YELLOW PLASTIC CAP LS-7429 AND SPINDLE WITH TAG LS-7429 AS SHOWN ON PLAT  
 FOUND MONUMENT AS SHOWN ON PLAT

## SURVEYOR'S STATEMENT

This Corner Record was prepared by me or under my direction in conformance with the

Land Surveyors Act on March 15, 2012

Signed Matthew S. Webb P.L.S. or R.C.E. No. 7429



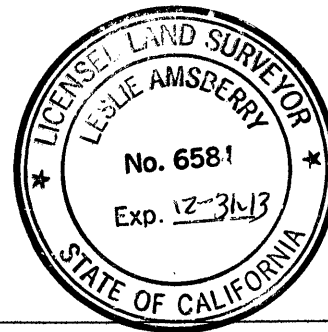
## COUNTY SURVEYOR'S STATEMENT

This Corner Record was received \_\_\_\_\_

and examined and filed May 14, 2012

Signed Leslie Amsterry P.L.S. or R.C.E. No. 6584

Title Deputy County Surveyor



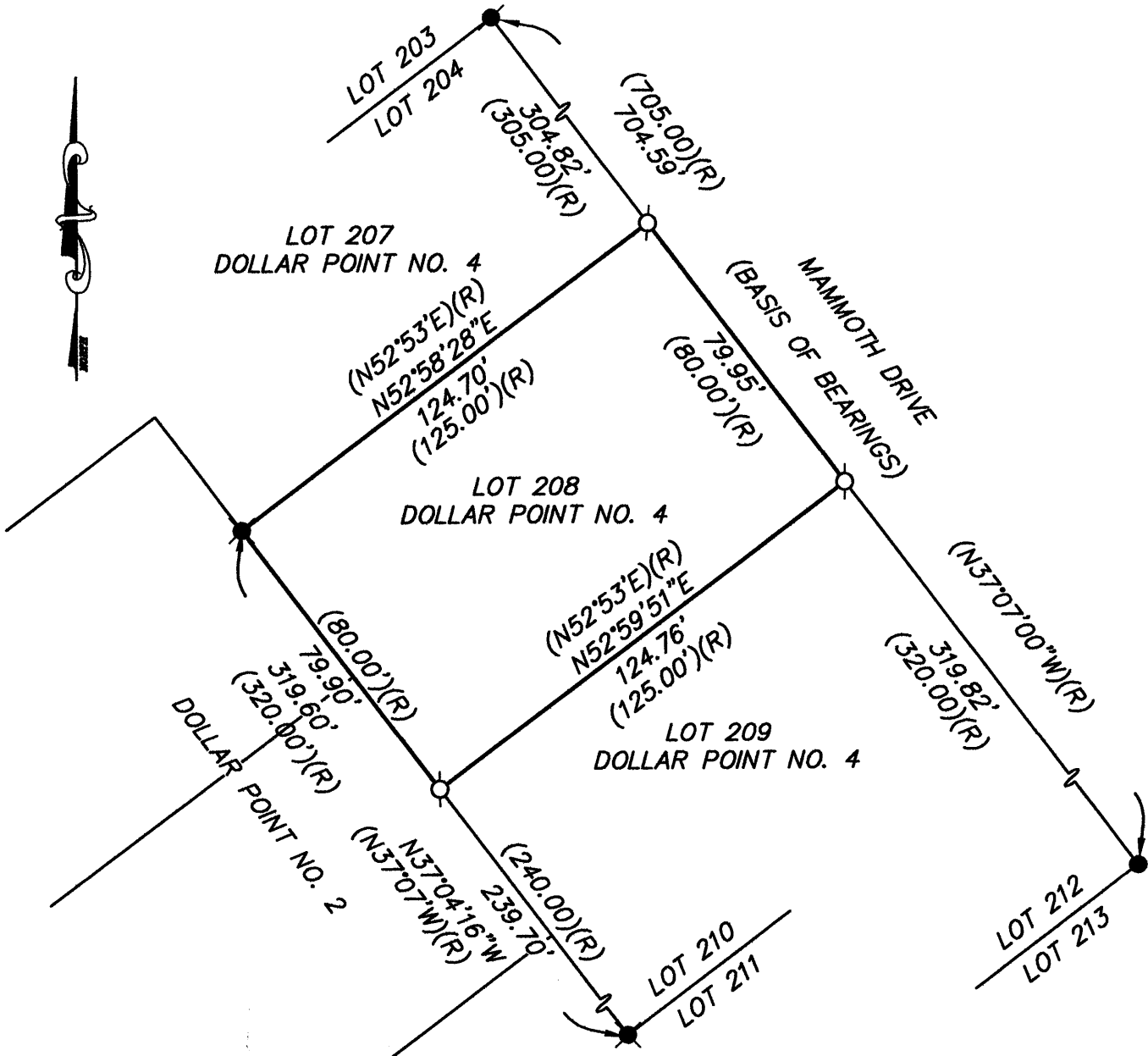
## COUNTY SURVEYOR'S COMMENT:

\_\_\_\_\_  
 \_\_\_\_\_  
 \_\_\_\_\_  
 \_\_\_\_\_

BOOK 15 CORNER RECORDS PAGE 35

# PLAT OF SURVEY

LOT 208, OF DOLLAR POINT UNIT NO. 4 SUBDIVISION  
 LOCATED IN BOOK. H OF MAPS AT PAGE 40 O.R.P.C.  
 SECTION 33, TOWNSHIP 16 NORTH, RANGE 17 EAST, M.D.B. & M.  
 COUNTY OF PLACER CALIFORNIA  
 SCALE: 1" = 40' OCTOBER, 1999



- FOUND: 1/2" REBAR (NO TAG)
- ⊗ FOUND: 1/2" IRON PIN (NO TAG, ACCEPTED AS RECORD THOUGH OUT SUBDIVISION)
- FOUND: 5/8" REBAR LS 3422
- SET: 5/8" REBAR WITH YELLOW PLASTIC CAP LS #7429
- (R) RECORD PER H/MAPS/40 (DOLLAR PT. NO. 4 SUBD.)

J/N 951.00

BOOK 15 CORNER RECORDS PAGE 35