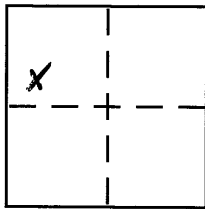


CORNER RECORD

Document Number 20110036
County of PLACER, California

City of _____
Brief Legal Description LOT 6, BLOCK K, ICE LAKES SUBDIVISION No.1, D/MAPS/85 OR.P.C.



SEC. 35
T. 17 N.
R. 14 E.
M.D.B.#11
CORNER TYPE
Government Corner Control
Meander Property
Rancho Other
Date of Survey 8/1/11

COORDINATES (Optional)
N. _____
E. _____
Zone _____ NAD27 NAD83
NAD83 Epoch _____
Elev. _____
Vert. Datum: NGVD29 NAVD88
Meas. Units: Metric Imperial

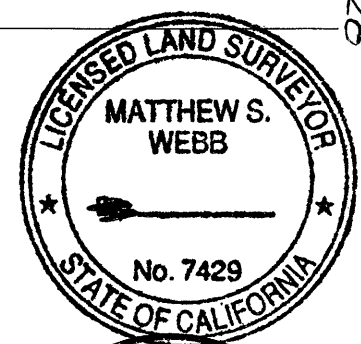
Corner - Left as found Found and tagged Established Reestablished Rebuilt

Identification and type of corner found: Evidence used to identify or procedure used to establish or reestablish the corner:
USED RECORD DIMENSIONS AND FOUND MONUMENTS PER D/MAPS/85 AND 2/COR/89 OR.P.C. TO REESTABLISH THE MISSING CORNERS OF LOT 6, BLOCK K AS SHOWN ON ACCOMPANYING PLAT

A description of the physical condition of the monument as found and as set or reset:
SET 5/8" REBAR WITH YELLOW PLASTIC CAP LS-7429 AND NAIL AND BRASS TAG LS-7429 AS SHOWN ON PLAT
FOUND MONUMENT AS SHOWN ON PLAT

SURVEYOR'S STATEMENT

This Corner Record was prepared by me or under my direction in conformance with the Land Surveyor's Act on August 03 2011
Signed Matthew Webb P.L.S or R.C.E. No. LS-7429



COUNTY SURVEYOR'S STATEMENT

This Corner Record was received _____
and examined and filed MAY 14, 2012
Signed Leslie Amsberry P.L.S or R.C.E. No. 6584
Title Deputy County Surveyor



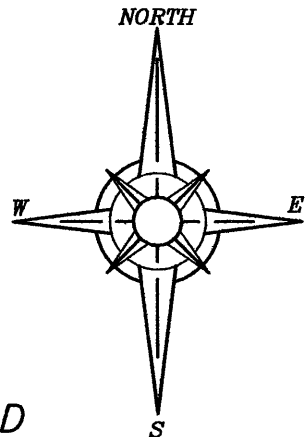
County Surveyor's Comment THE FILING OF THIS CORNER RECORD DOES NOT CONSTITUTE AGREEMENT WITH THE LOCATION SHOWN OR RELINQUISHMENT OF ANY PORTION OF THE R/W FOR DULZURA RD (59018) PER ICE BLOCK SUBDIVISION FILED IN BK D/MAPS/85 OR.P.C.

BOOK 15 CORNER RECORDS PAGE 28

PLAT OF SURVEY

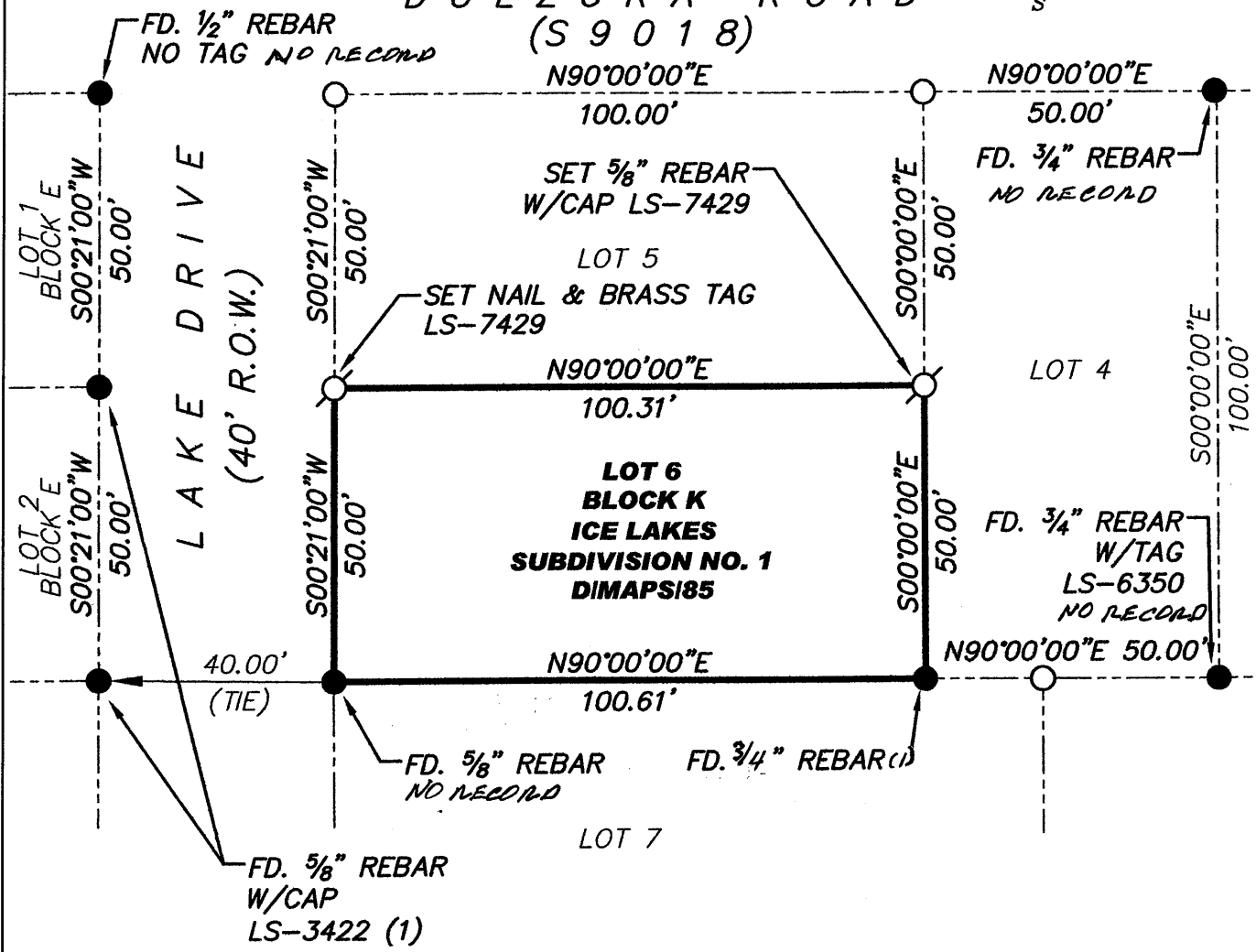
LOT 6, BLOCK K, ICE LAKES SUBDIVISION NO. 1, AS FILED IN BOOK D OF MAPS AT PAGE 85, OFFICIAL RECORDS PLACER COUNTY, CALIFORNIA. A PORTION OF THE S.W. 1/4 OF THE N.W. 1/4 OF SECTION 35, TOWNSHIP 17 N., RANGE 14 E., M.D.B. & M.

SCALE 1" = 30' DATE OF SURVEY 8/1/2011



BOOK 15 CORNER RECORDS PAGE 28

DULZURA ROAD (S 9 0 1 8)



NOTE:

ALL BEARINGS AND DISTANCES SHOWN HEREON ARE RECORD PER D/MAPS/85, O.R.P.C. AND PER 2/COR. REC./89, O.R.P.C.

- FOUND MONUMENT AS SHOWN HEREON
- SET AS NOTED L.S. 7429
- DIMENSION PT (NOTHING FOUND OR SET)
- (1) RECORD PER BOOK 2, CORNER RECORDS, PAGE 89, O.R.P.C. J/N 1951.00