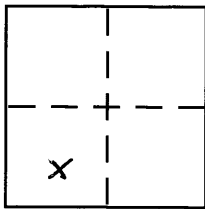


CORNER RECORD

Document Number 20110035
County of PLACER, California

City of _____

Brief Legal Description LOT 248, TRACT. NO. 295 NORTHSTAR UNIT 6-B SUB. K/MAR/14 O.R.P.



Sec. 29
T. 17N.
R. 17E.
MDB#M
CORNER TYPE
Government Corner Control
Meander Property
Rancho Other
Date of Survey 8/2/2011

COORDINATES (Optional)
N. _____
E. _____
Zone _____ NAD27 NAD83
NAD83 Epoch _____
Elev. _____
Vert. Datum: NGVD29 NAVD88
Meas. Units: Metric Imperial

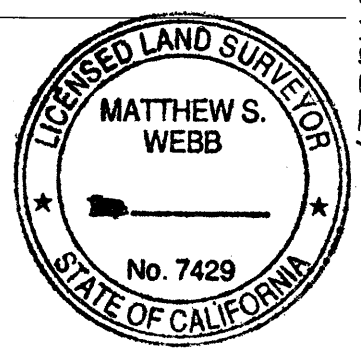
Corner - Left as found Found and tagged Established Reestablished Rebuilt

Identification and type of corner found: Evidence used to identify or procedure used to establish or reestablish the corner:
USED RECORD DIMENSIONS AND FOUND MONUMENTS PER K/MAR/14 O.R.P.C. TO REESTABLISH THE MISSING CORNERS OF LOT 248, AS SHOWN ON ACCOMPANYING PLAT

A description of the physical condition of the monument as found and as set or reset:
SET 5/8" REBAR WITH YELLOW PLASTIC CAP LS-7429 AND SPINDLE WITH BRASS WASHER LS-7429 AS SHOWN ON PLAT
FOUND MONUMENT AS SHOWN ON PLAT

SURVEYOR'S STATEMENT

This Corner Record was prepared by me or under my direction in conformance with the Land Surveyor's Act on August 03, 2011
Signed [Signature] P.L.S. or R.C.E. No. LS7429



COUNTY SURVEYOR'S STATEMENT

This Corner Record was received _____
and examined and filed May 14, 2012
Signed [Signature] P.L.S. or R.C.E. No. 6584
Title Deputy County Surveyor



County Surveyor's Comment _____

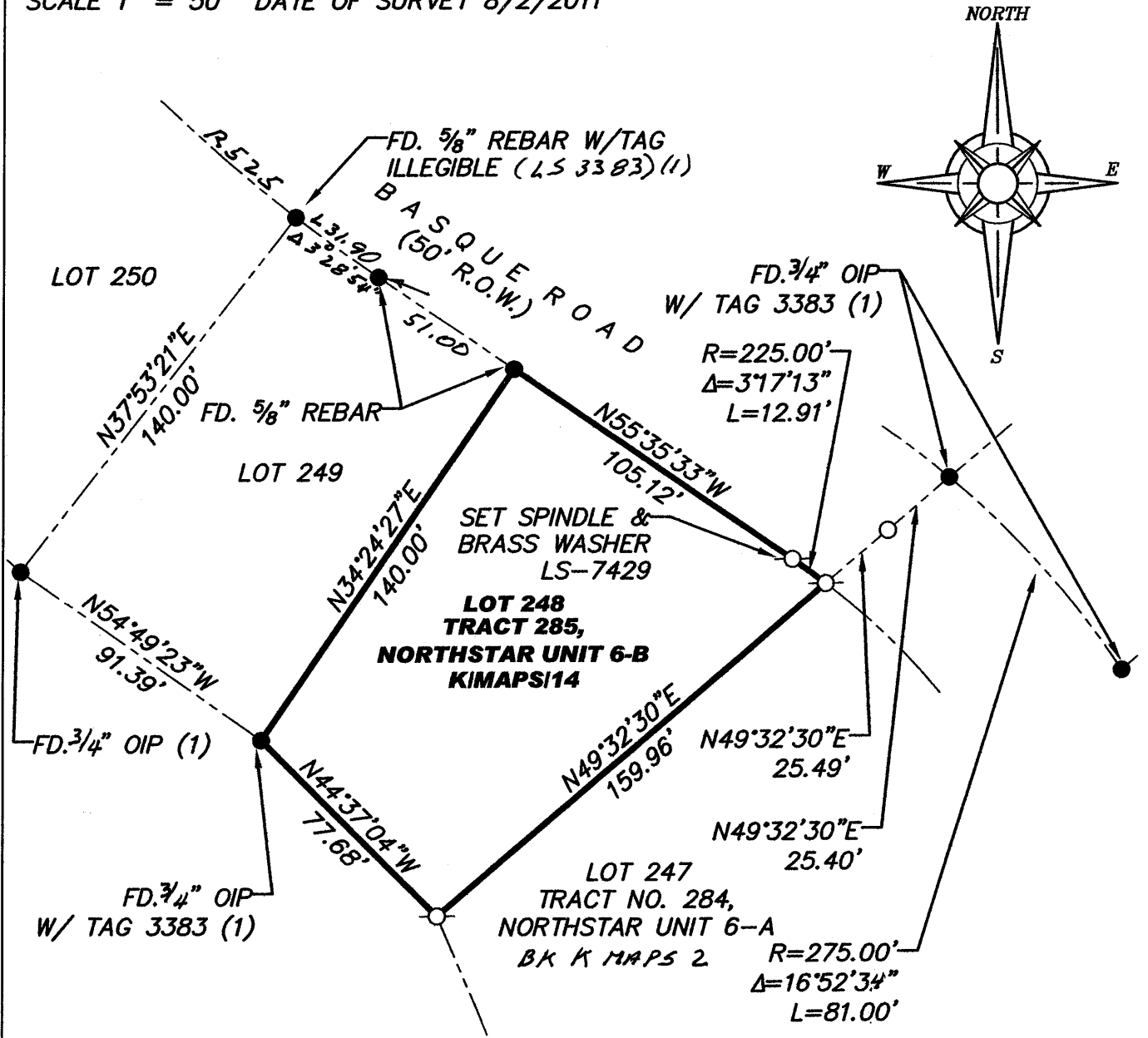
BOOK 15 CORNER RECORDS PAGE 27

PLAT OF SURVEY

LOT 248, TRACT NO. 285 NORTHSTAR UNIT 6-B SUBDIVISION, AS FILED IN BOOK K OF MAPS AT PAGE 14, OFFICIAL RECORDS PLACER COUNTY, CALIFORNIA. A PORTION OF SECTION 29, TOWNSHIP 17 N., RANGE 17 E., M.D.B. & M.

SCALE 1" = 50' DATE OF SURVEY 8/2/2011

BOOK 15 CORNER RECORDS PAGE 27



- FOUND MONUMENT AS SHOWN HEREON
- SET 5/8" REBAR WITH YELLOW PLASTIC CAP L.S. 7429
- DIMENSION POINT (NOTHING FOUND OR SET)
- (1) PER K/MAPS/14

J/N 1956.00