

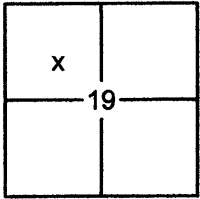
CORNER RECORD

Document Number 20120042

City of _____

County of PLACER, California

Brief Legal Description LOTS 17 & 18, BLOCK D, ADDITION TO BROCKWAY VISTA SUBDIVISION, D/MAPS/30 & 11/SUR/147 O.R.P.C.



SEC. 19
T. 16 N.
R. 18 E.
M.D.B. & M.

CORNER TYPE

Government Corner Control
 Meander Property
 Rancho Other
 Date of Survey 7/9/2012

COORDINATES (OPTIONAL)

N. _____
 E. _____
 Zone _____ Datum _____
 Elev. _____
 Vert. Datum: NGVD29 NAVD88
 Meas. Units: Metric Imperial

CORNER- Left as Found Found and Tagged Established Reestablished Rebuilt

Identification and type of corner found: Evidence used to identify or procedure used to establish or reestablish the corner:

USED RECORD DIMENSIONS AND FOUND MONUMENTS PER 11/SUR0147 O.R.P.C.,
TO REESTABLISH THE MISSING CORNERS OF LOTS 17 & 18, AS SHOWN ON THE ACCOMPANYING PLAT.

A description of the physical condition of the monument as found and as set or reset:

- SET 5/8" REBAR WITH YELLOW PLASTIC CAP LS-7429 AND SPINDLE WITH TAG LS-7429 AS SHOWN ON PLAT
- FOUND MONUMENT AS SHOWN ON PLAT

SURVEYOR'S STATEMENT

This Corner Record was prepared by me or under my direction in conformance with the

Land Surveyors Act on January 04, 2013

Signed [Signature] P.L.S. or R.C.E. No. 7429



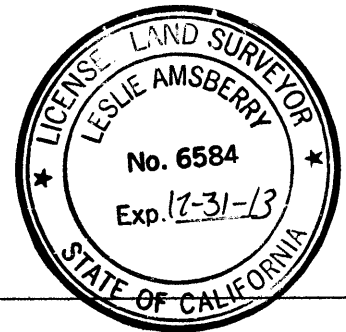
COUNTY SURVEYOR'S STATEMENT

This Corner Record was received _____

and examined and filed January 29, 2013

Signed [Signature] P.L.S. or R.C.E. No. 6584

Title Deputy County Surveyor



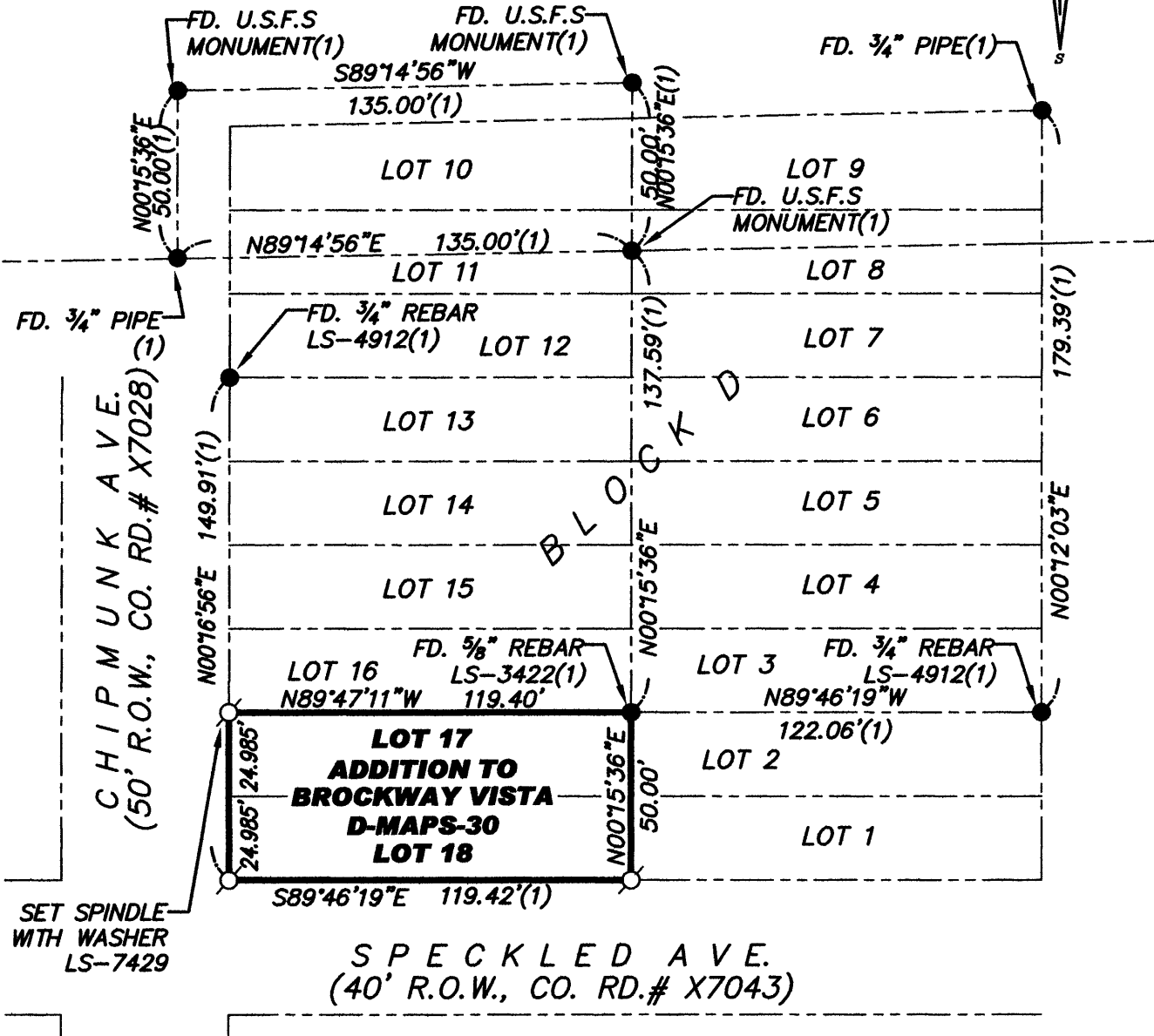
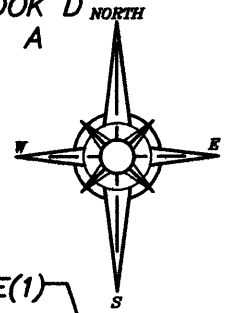
COUNTY SURVEYOR'S COMMENT:

BOOK 15 CORNER RECORDS PAGE 26

PLAT OF SURVEY

LOTS 17 & 18, BLOCK D, ADDITION TO BROCKWAY VISTA SUBDIVISION, BOOK D OF MAPS AT PAGE 30, OFFICIAL RECORDS PLACER COUNTY, CALIFORNIA. A PORTION OF SECTION 19, TOWNSHIP 16 N., RANGE 18 E., M.D.B. & M.

SCALE 1" = 60' DATE OF SURVEY 7/9/2012



BY 15 CORNER RECORDS, PG 9C

NOTE: ESTABLISHMENT OF RIGHT OF WAY IS PER 11/SUR/147 O.R.P.C.

- FOUND MONUMENT AS SHOWN HEREON
- DIMENSION POINT (NOTHING FOUND OR SET)
- ⊙ SET 5/8" REBAR WITH YELLOW PLASTIC CAP L.S. 7429 UNLESS OTHERWISE NOTED
- (1) RECORD PER 11/SUR/147, O.R.P.C..

J/N 2060.00