

# CORNER RECORD

Document Number 20080085

City of \_\_\_\_\_

County of PLACER, California

Brief Legal Description CENTERLINE OF SCHAFER MILL ROAD AND AMARANTH COURT, MARTIS CAMP UNIT No.3, PER BOOK BB, PG. 68, SEE SHEET 15 & 17 OF 17.

26	
35	X

CORNER TYPE

R16E., M.D.M.  
 S26,S35 Government Corner  Control   
 T17N Meander  Property   
 R16E Rancho  Other

Date of Survey NOV. 3, 2008

COORDINATES(Optional)

N. \_\_\_\_\_  
 E. \_\_\_\_\_  
 Zone \_\_\_\_\_ NAD27  NAD83   
 NAD83 Epoch \_\_\_\_\_  
 Elev. \_\_\_\_\_  
 Vert.Datu: NGVD29  NADV88   
 Meas.Units: Metric  Imperial

Corner - Left as found  Found and tagged  Established  Reestablished  Rebuilt

Identification and type of corner found: Evidence used to identify or procedure used to establish or reestablish the corner:

REESTABLISHED CENTERLINE USING FOUND MONUMENTS AND RECORD INFORMATION PER BB MAPS 68 & BB MAPS 65, AS SHOWN ON REVERSE.

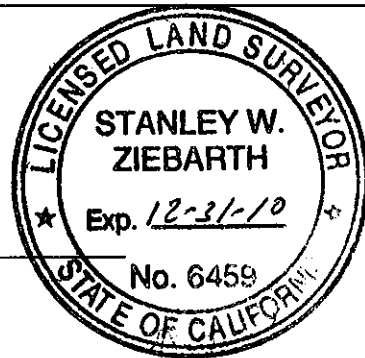
A description of the physical condition of the monument as found and as set or reset: SET A 5/8" REBAR AND PLASTIC CAP "LS 6459" OR A STD COUNTY MONUMENT WELL WITH A BRASS DISK STAMPED "LS 6459" AS SHOWN ON SHEET No. 2. FOUND ALL OTHER MONUMENTS AS SHOWN ON REVERSE IN GOOD CONDITION.

### SURVEYOR'S STATEMENT

This Corner Record was prepared by me or under my direction in conformance with

the Land Surveyor's Act on NOV. 3, 2008

Signed Stanley W. Ziebarth P.L.S. or R.C.E. No. 6459



### COUNTY SURVEYOR'S STATEMENT

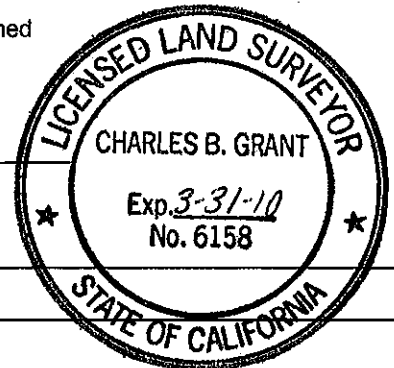
This Corner Record was received \_\_\_\_\_ and examined

and filed APRIL 14, 2009

Signed Charles B. Grant P.L.S. or R.C.E. No.: 6158  
 LICENSE EXPIRES 3-31-10

Title COUNTY SURVEYOR

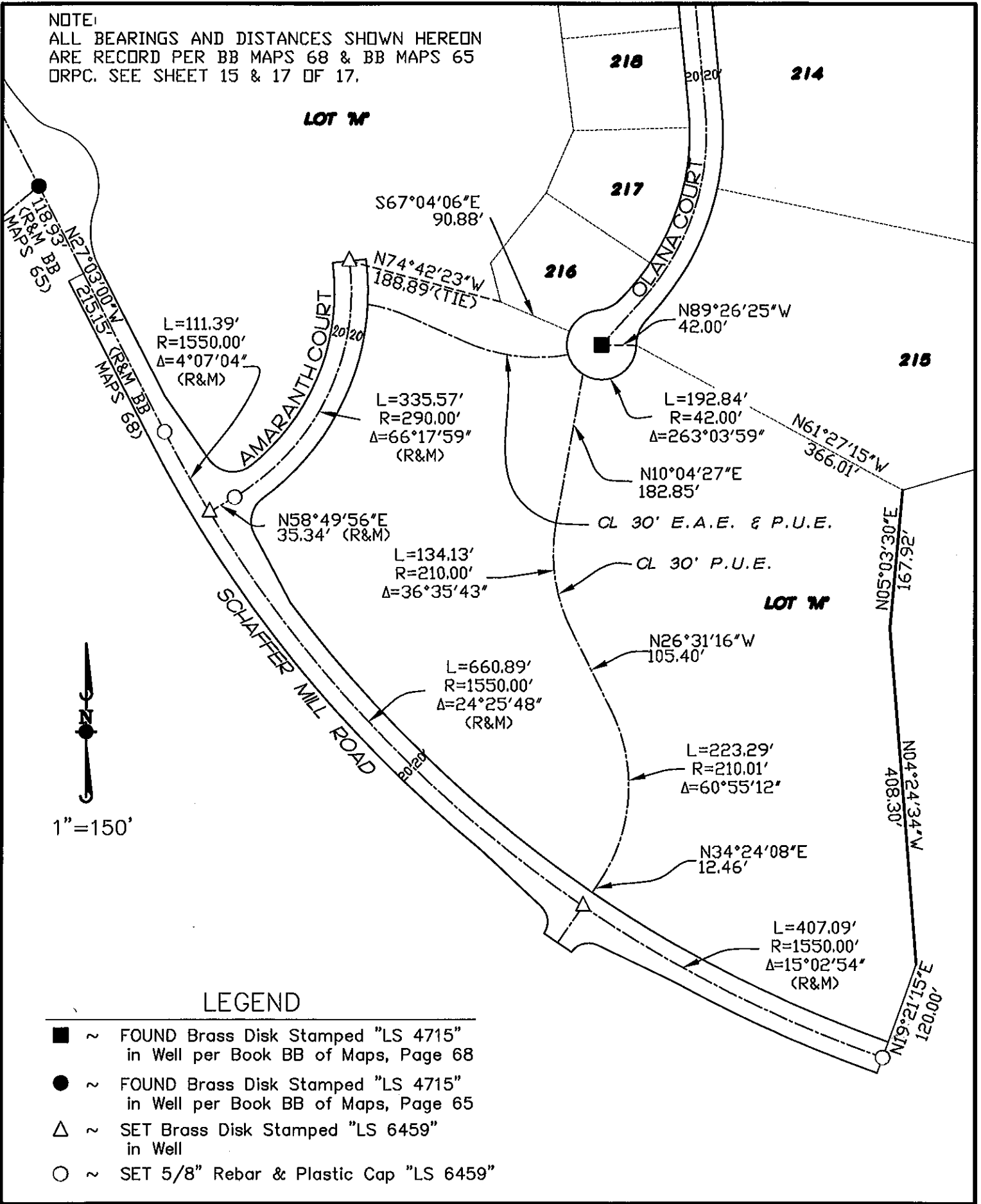
County Surveyor's Comment \_\_\_\_\_



BOOK 13 CORNER RECORDS, PAGE 22

NOTE:  
 ALL BEARINGS AND DISTANCES SHOWN HEREON  
 ARE RECORD PER BB MAPS 68 & BB MAPS 65  
 DRPC. SEE SHEET 15 & 17 OF 17.

BOOK 13 CORNER RECORDS, PAGE 22



LEGEND

- ~ FOUND Brass Disk Stamped "LS 4715" in Well per Book BB of Maps, Page 68
- ~ FOUND Brass Disk Stamped "LS 4715" in Well per Book BB of Maps, Page 65
- △ ~ SET Brass Disk Stamped "LS 6459" in Well
- ~ SET 5/8" Rebar & Plastic Cap "LS 6459"