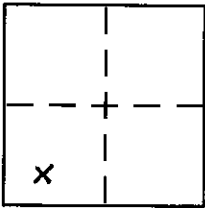


CORNER RECORD

Document Number 20100011

City of \_\_\_\_\_ County of PLACER, California

Brief Legal Description LOT 263, DOLLAR POINT No. 4, H/MAPS/40, O.R.P.C.



SEC. 33  
T. 16N.  
R. 17E.  
M.D.B.#11

CORNER TYPE

Government Corner  Control   
Meander  Property   
Rancho  Other   
Date of Survey 4/14/2010

COORDINATES (Optional)

N. \_\_\_\_\_  
E. \_\_\_\_\_  
Zone \_\_\_\_\_ NAD27  NAD83   
NAD83 Epoch \_\_\_\_\_  
Elev. \_\_\_\_\_  
Vert. Datum: NGVD29  NAVD88   
Meas. Units: Metric  Imperial

Corner - Left as found  Found and tagged  Established  Reestablished  Rebuilt

Identification and type of corner found: Evidence used to identify or procedure used to establish or reestablish the corner:

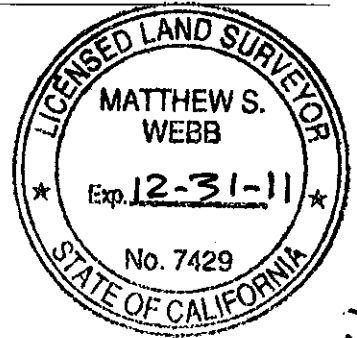
USED MONUMENTS FOUND PER 1/CR/16Z AND H/MAPS/40 O.R.P.C. TO RE-ESTABLISH THE MISSING CORNER OF LOT 263, AS SHOWN ON ACCOMPANYING PLAT.

A description of the physical condition of the monument as found and as set or reset:

SET NAIL AND TAG IN CONCRETE LS-7429  
FOUND MONUMENTS PER 1/CR/16Z O.R.P.C. AS SHOW ON PLAT

SURVEYOR'S STATEMENT

This Corner Record was prepared by me or under my direction in conformance with the Land Surveyor's Act on July 20, 2010.  
Signed [Signature] P.L.S. or R.C.E. No. 7429



COUNTY SURVEYOR'S STATEMENT

This Corner Record was received \_\_\_\_\_ and examined and filed SEPTEMBER 30, 2010.  
Signed [Signature] P.L.S. or R.C.E. No. 6584  
Title Deputy County Surveyor



County Surveyor's Comment \_\_\_\_\_

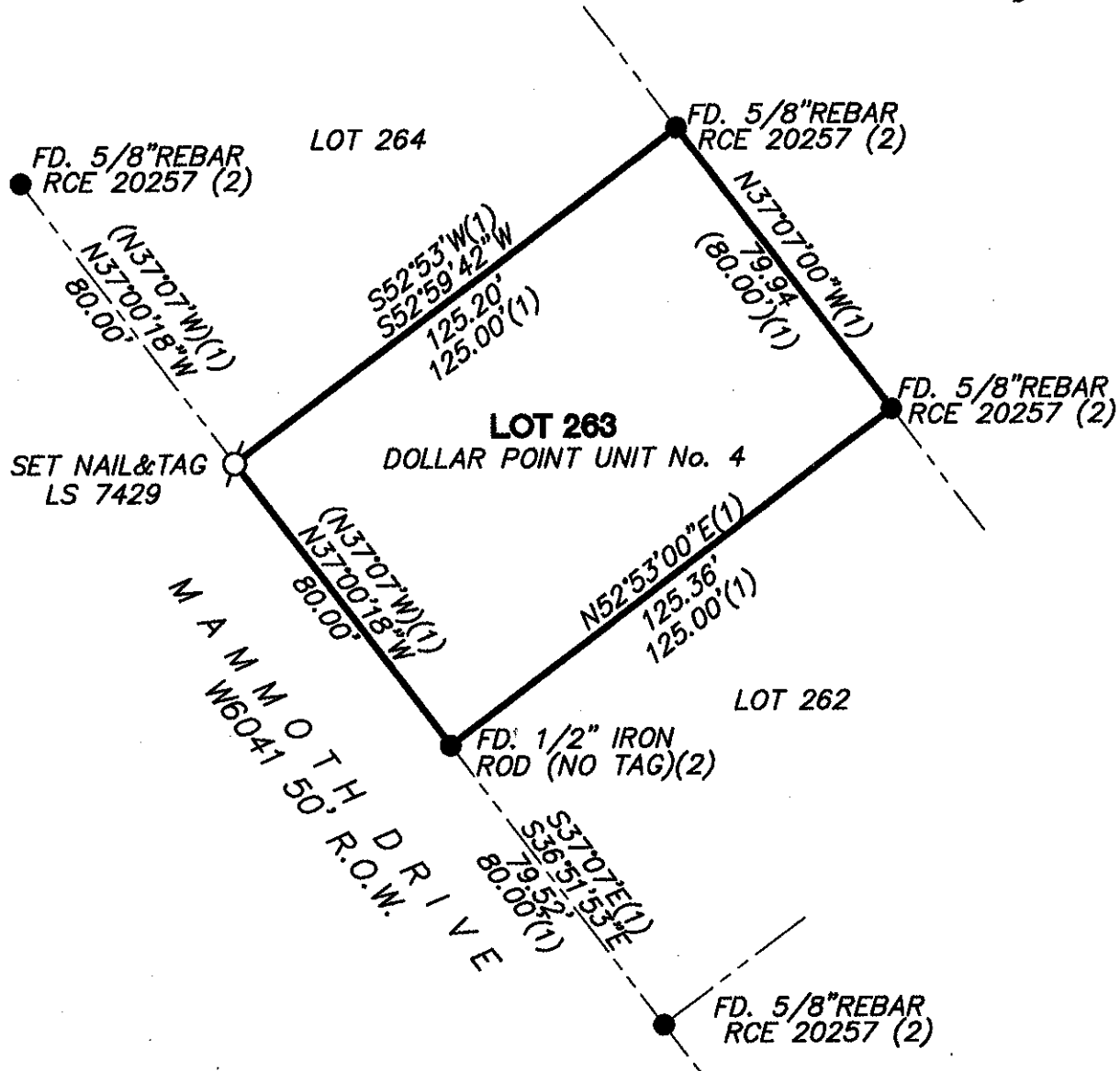
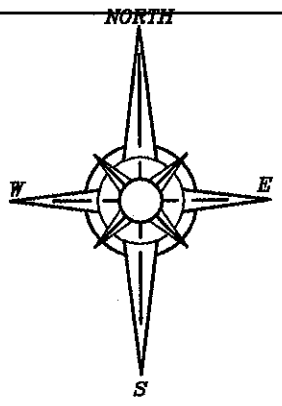
BOOK 13, CORNER RECORDS, PAGE 100

BOOK 13, CORNER RECORDS, PAGE 100

**PLAT OF SURVEY**

LOT 263, DOLLAR POINT UNIT NO. 4 SUBDIVISION, AS FILED IN BOOK H OF MAPS AT PAGE 40, OFFICIAL RECORDS PLACER COUNTY, CALIFORNIA. A PORTION OF SECTION 13, TOWNSHIP 16 N., RANGE 17 E., M.D.B. & M.

SCALE 1" = 40' DATE OF SURVEY 4/14/2010



**NOTE:**

ALL BEARINGS AND DISTANCES SHOWN HEREON ARE RECORD UNLESS NOTED PER H/MAPS/40, & 1/CR/162 O.R.P.C.

- FOUND MONUMENT AS SHOWN HEREON
- SET NAIL AND TAG IN CONCRETE LS-7429
- (1) RECORD PER H/MAPS/40 O.R.P.C
- (2) RECORD PER 1/CR/162 O.R.P.C

J/N 1660.00