

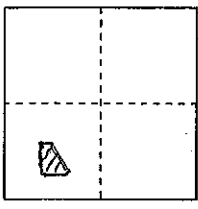
**CORNER RECORD**

**COUNTY OF PLACER, CALIFORNIA**

City of AUBURN

Document Number 20090093

Brief Legal Description Lot 45 / P/Maps/33



**S.21**  
**T.13N**  
**R.8E**

**CORNER TYPE**

Government Corner  Control   
Meander  Property   
Rancho  Other   
Date of Survey 11/09/09

**COORDINATES (Optional)**

N. \_\_\_\_\_  
E. \_\_\_\_\_  
Zone \_\_\_\_\_ Datum \_\_\_\_\_  
Elev. \_\_\_\_\_

Corner--- Left as found  Found and tagged  Established  Reestablished  Rebuilt

Identification and type of corner found: Evidence used to identify or procedure used to establish or reestablish corner:

SET THE NE CORNER OF LOT 45 OF DRG CREEK PARK SUB.  
P/MAPS/33 AFTER FINDING THE OTHER CORNERS SHOWN ON  
P/MAPS/33 AND 13/CR/70

A description of the physical condition of the monument as found and as set or reset:

SET 3/4" REBAR WITH PLASTIC CAP MKD LS 3062

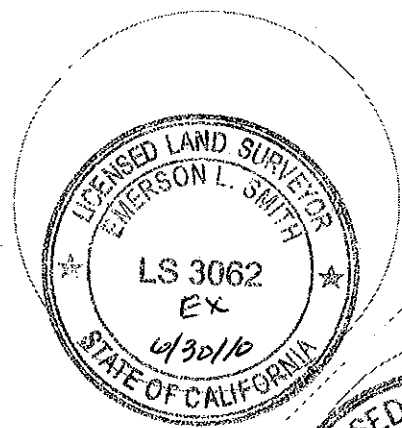
**SURVEYOR'S STATEMENT**

This Corner Record was prepared by me or under my direction in conformance with the Professional Land Surveyors' Act

on 11/13/09 2009

Signed Emerson L. Smith

L.S. or R.C.E. Number 3062 Expiration Date 6/30/10



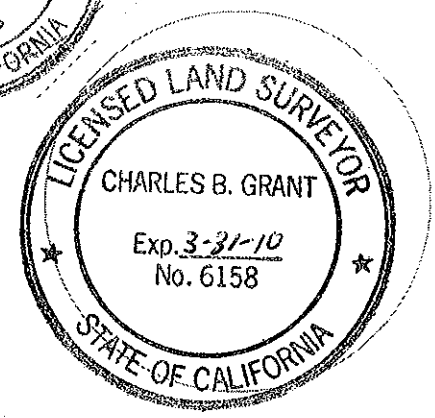
**COUNTY SURVEYOR'S STATEMENT**

This Corner Record was received \_\_\_\_\_ 20\_\_\_\_

and examined and filed DEC 29 2009

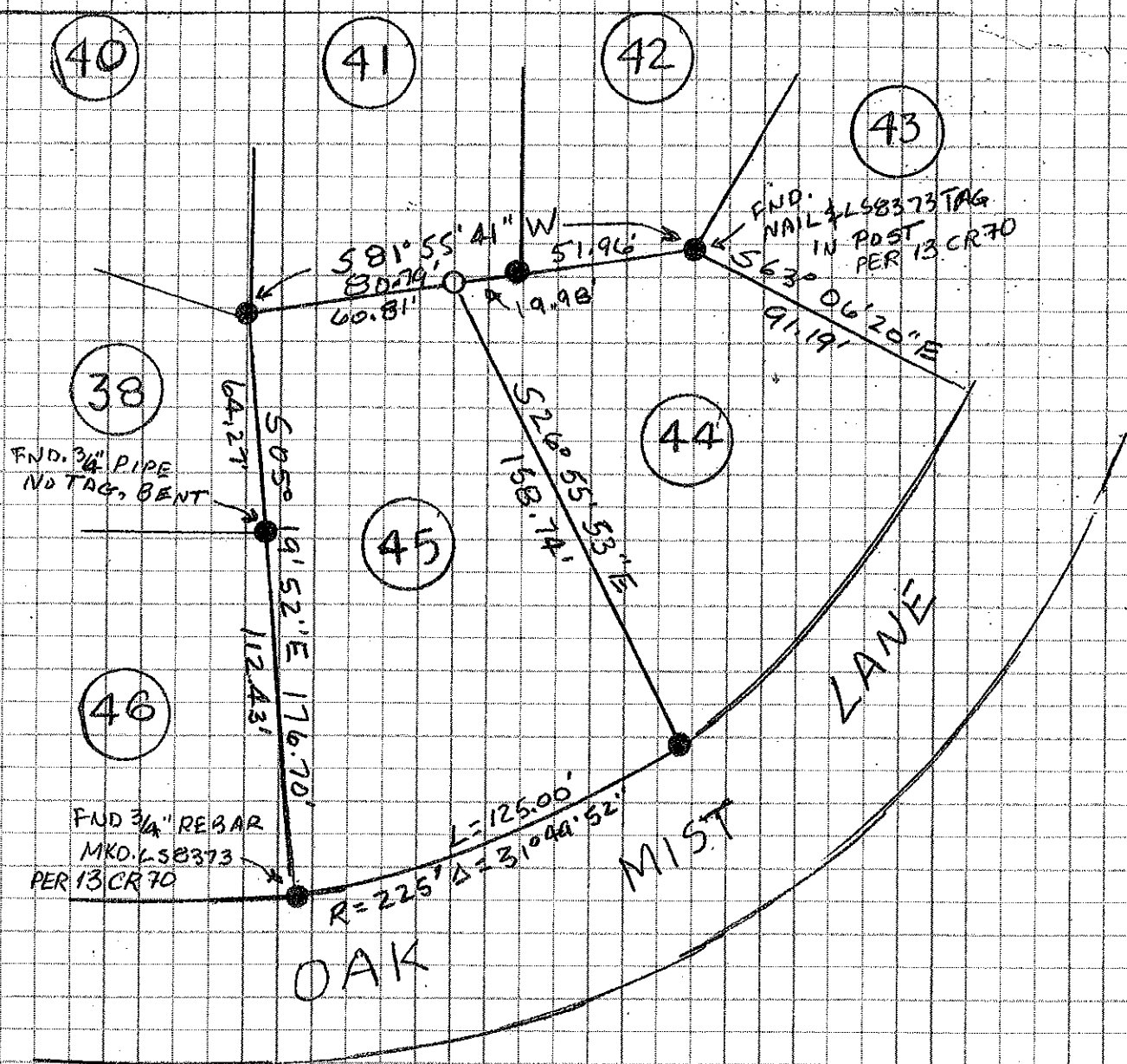
Signed Charles B. Grant Title COUNTY SURVEYOR

L.S. or R.C.E. Number 6158 Expiration Date 3-31-10



County Surveyor's Comment \_\_\_\_\_

BOOK 13 CORNER RECORDS PAGE 73



1" = 50'

MAP SHOWING A SURVEY OF LOT 45 OF DRY CREEK PARK SUB. P/PLATS/33 FOR KENNETH CASLER.

- = FND 3/4" OPEN PIPE, AFFIXED LS 3062 TAG, UNLESS NOTED
  - = SET 3/4" REBAR WITH PLASTIC CAP MKD LS 3062
- EMERSON L. SMITH - LS 3062