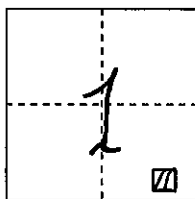


# CORNER RECORD

# COUNTY OF PLACER, CALIFORNIA

City of \_\_\_\_\_ Document Number 20090085

Brief Legal Description RECORD of SURVEY No. 3078 Book 21 of SURVEYS, PAGE 20



S. 1

### CORNER TYPE

### COORDINATES (Optional)

T. 13 N.

Government Corner

Control

N. \_\_\_\_\_

R. 6 E.

Meander

Property

E. \_\_\_\_\_

Rancho

Other

Zone \_\_\_\_\_ Datum \_\_\_\_\_

Date of Survey \_\_\_\_\_

Elev. \_\_\_\_\_

Corner--- Left as found  Found and tagged  Established  Reestablished  Rebuilt

Identification and type of corner found: Evidence used to identify or procedure used to establish or reestablish corner: FOUND RECORD MONUMENTS, AS SHOWN ON REVERSE SIDE, PER BOOK 21 of SURVEYS, PAGE 20, O.R.P.C. FOUND MONUMENTS WERE OF THEIR DESCRIBED NATURE AND RECORD LOCATION WITH NO MATERIAL DISCREPANCIES

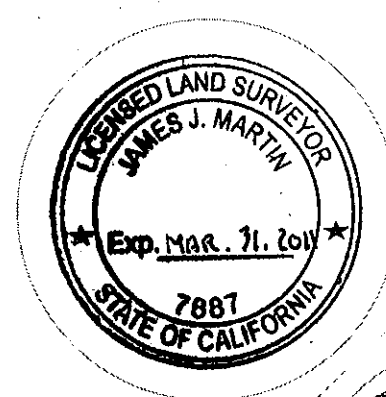
A description of the physical condition of the monument as found and as set or reset: FROM RECORD MONUMENTS SET 3/4" REBAR W/ COPPER COLLAR STAMPED LS 7887 AT RECORD LOCATION ON THE WESTERLY LINE of Lot 16, D-MAPS-42, THERMALANDS UNIT THREE, PER 21-ROS-20

## SURVEYOR'S STATEMENT

This Corner Record was prepared by me or under my direction in conformance with the Professional Land Surveyors' Act on October 15 2009.

Signed [Signature]

L.S. or ~~R.C.E.~~ Number 7887 Expiration Date MAR 31, 2011

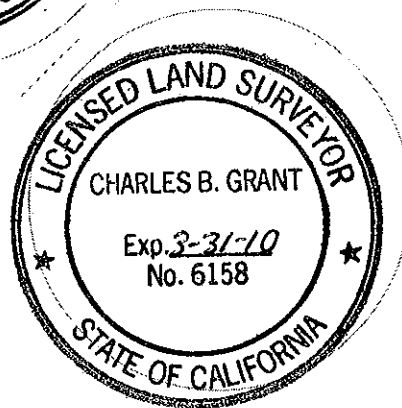


## COUNTY SURVEYOR'S STATEMENT

This Corner Record was received \_\_\_\_\_ 20\_\_\_\_ and examined and filed NOVEMBER 12 2009.

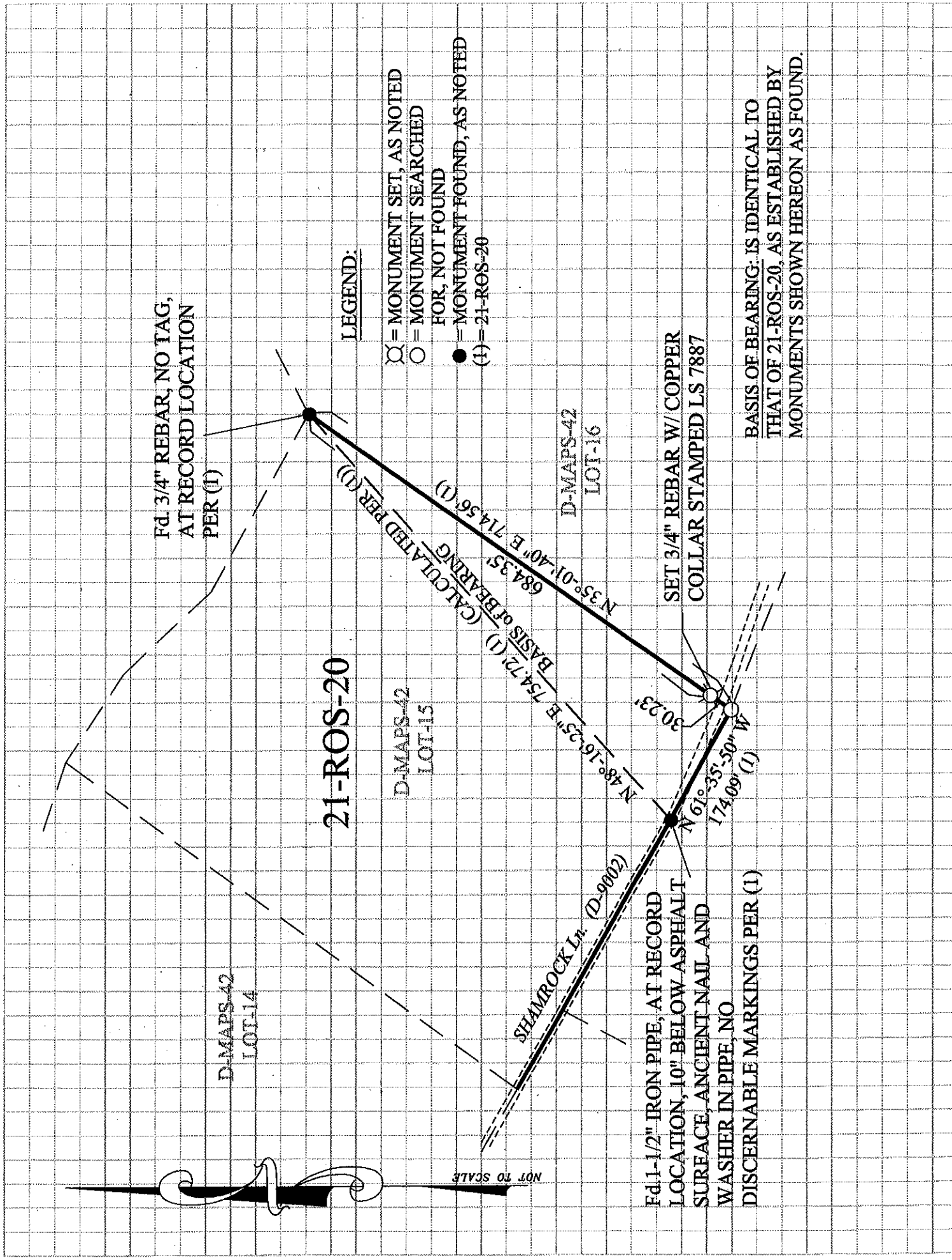
Signed [Signature] Title COUNTY SURVEYOR

L.S. or R.C.E. Number 6158 Expiration Date 3-31-10



County Surveyor's Comment \_\_\_\_\_

BOOK 13 CORNER RECORDS PAGE 67



Fd. 3/4" REBAR, NO TAG,  
AT RECORD LOCATION  
PER (1)

21-ROS-20

LEGEND:

- ⊗ = MONUMENT SET, AS NOTED
- = MONUMENT SEARCHED FOR, NOT FOUND
- = MONUMENT FOUND, AS NOTED
- (1) = 21-ROS-20

Fd. 1-1/2" IRON PIPE, AT RECORD LOCATION, 10" BELOW ASPHALT SURFACE, ANCIENT NAIL AND WASHER IN PIPE, NO DISCERNABLE MARKINGS PER (1)

SET 3/4" REBAR W/ COPPER COLLAR STAMPED LS 7887

BASIS OF BEARING: IS IDENTICAL TO THAT OF 21-ROS-20, AS ESTABLISHED BY MONUMENTS SHOWN HEREON AS FOUND.

NOT TO SCALE