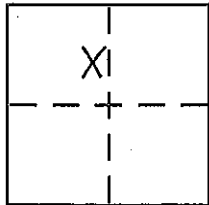


CORNER RECORD

Document Number _____

City of _____ County of PLACER, California

Brief Legal Description LOT 30, TRACT No. 222, NORTHSTAR UNIT 1-A, J/MAPS/38, O.R.P.C.



SEC. 32
 T. 17 N. Government Corner Control
 R. 17 E. Meander Property
 M.D.B. & M. Rancho Other
 Date of Survey 10-4-2006

COORDINATES (Optional)
 N. _____
 E. _____
 Zone _____ NAD27 NAD83
 NAD83 Epoch _____
 Elev. _____
 Vert. Datum: NGVD29 NAVD88
 Meas. Units: Metric Imperial

Corner - Left as found Found and tagged Established Reestablished Rebuilt

Identification and type of corner found: Evidence used to identify or procedure used to establish or reestablish the corner:

USED THE RECORD DIMENSIONS AND THE FOUND ORIGINAL MONUMENTS PER J/MAPS/38, O.R.P.C., TO REESTABLISH THE MISSING CORNER OF LOT 30, AS SHOWN ON THE ACCOMPANYING PLAT.

A description of the physical condition of the monument as found and as set or reset:

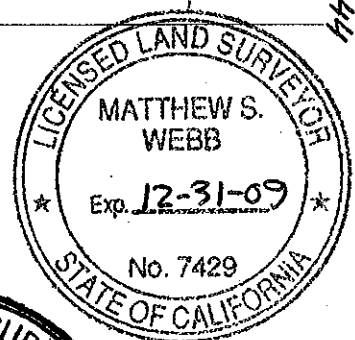
SET 5/8" REBAR WITH YELLOW PLASTIC CAP MARKED LS 7429.

SURVEYOR'S STATEMENT

This Corner Record was prepared by me or under my direction in conformance with

the Land Surveyor's Act on January 08, 2008

Signed Matthew S. Webb (P.L.S. or R.C.E. No. 7429)



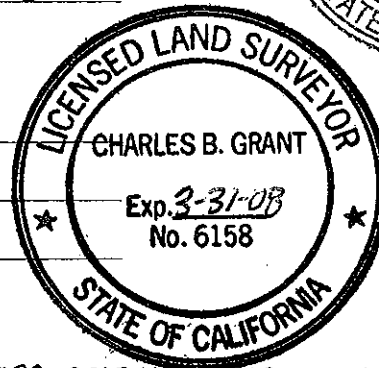
COUNTY SURVEYOR'S STATEMENT

This Corner Record was received _____

and examined and filed JANUARY 15 2008

Signed Charles B. Grant (P.L.S. or R.C.E. No. 6158)

Title DEPUTY COUNTY SURVEYOR



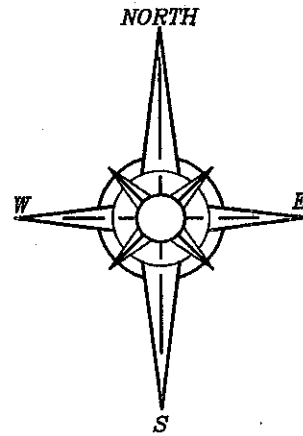
County Surveyor's Comment THE FILING OF THIS CORNER RECORD DOES NOT CONSTITUTE AGREEMENT WITH THE LOCATION SHOWN, OR RELINQUISHMENT OF ANY PORTION OF THE RIGHT-OF-WAY FOR BEAVER POND ROAD AS DEDICATED ON THE MAP ENTITLED "NORTHSTAR UNIT 1-A" FILED IN BOOK J OF MAPS AT PAGE 38 PLACER COUNTY OFFICIAL RECORDS.

BOOK 11 CORNER RECORDS PAGE 44

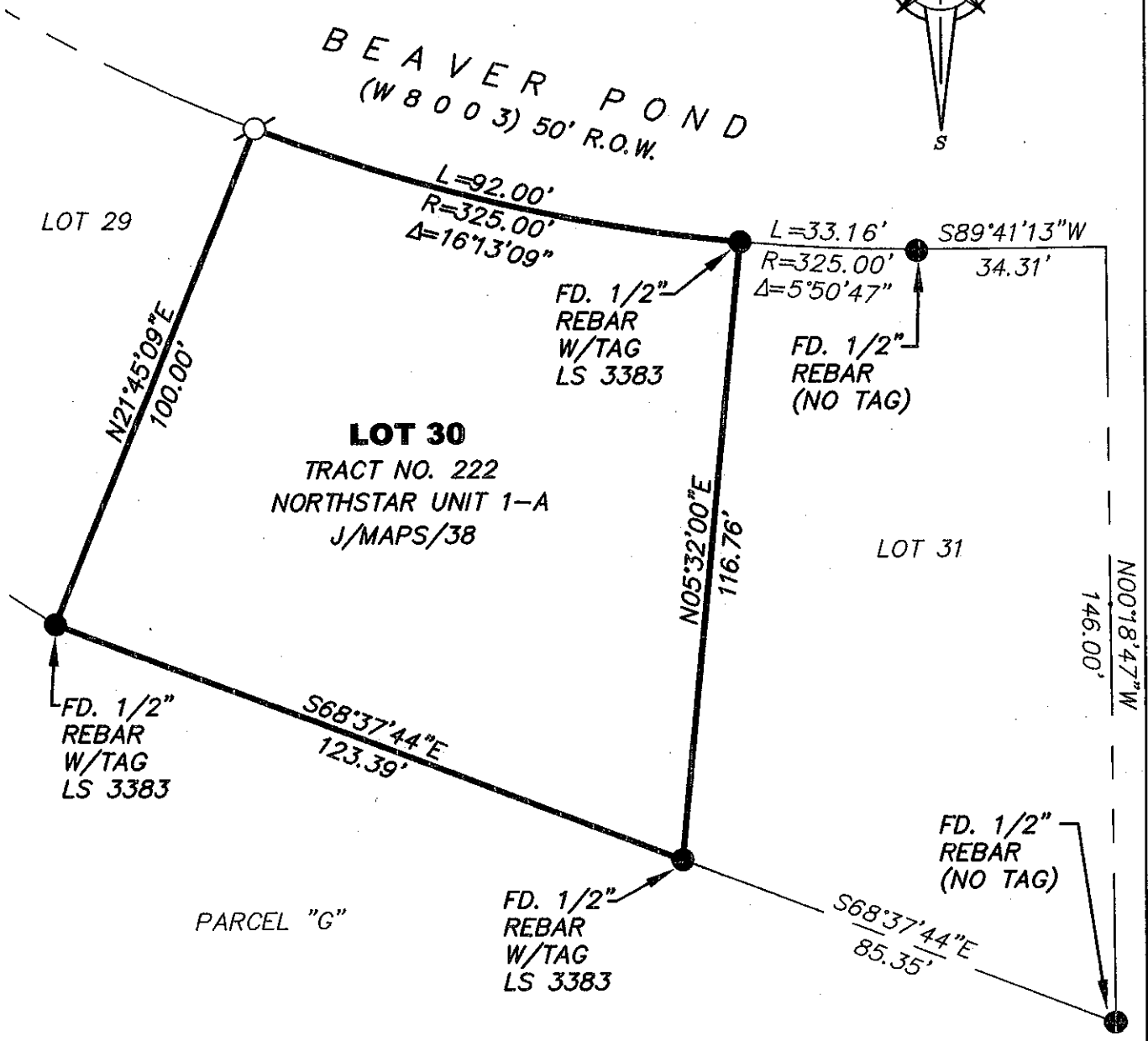
PLAT OF SURVEY

LOT 30, TRACT 222 NORTHSTAR UNIT 1-A
 SUBDIVISION, BOOK J OF MAPS AT PAGE 38,
 OFFICIAL RECORDS PLACER COUNTY, CALIFORNIA.
 A PORTION OF THE N.W. 1/4 OF SECTION 32,
 TOWNSHIP 17 N., RANGE 17 E., M.D.B. & M.

SCALE 1" = 30' DATE OF SURVEY 10/4/2006



BOOK 11 CORNER RECORDS PAGE 44



NOTE:

ALL BEARINGS AND DISTANCES SHOWN HEREON ARE RECORD
 PER J/MAPS/38, O.R.P.C.



FOUND MONUMENT AS SHOWN HEREON



SET 5/8" REBAR WITH YELLOW PLASTIC CAP L.S. 7429

J/N 1352.00