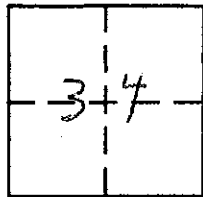


CORNER RECORD

COUNTY OF PLACER, CALIFORNIA

City of _____ Document Number _____

Brief Legal Description LOT #8 PER BOOK G OF MAPS PAGE 46



T. 15 N.
R. 9 E.
MDB&M

CORNER TYPE

- Government Corner
- Meander
- Rancho
- Date of Survey _____
- Control
- Property
- Other

COORDINATES (Optional)

N. _____
 E. _____
 Zone _____ Datum _____
 Elev. _____

Corner — Left as found Found and tagged Established Reestablished Rebuilt

Identification and type of corner found: Evidence used to identify or procedure used to establish or reestablish corner:

MONUMENTS RECOVERED AS SHOWN AND RECORD BEARINGS AND DISTANCES PER G-MAPS 46 USED TO DETERMINE REPLACEMENT POSITION(S)

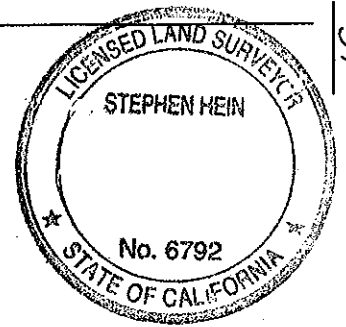
A description of the physical condition of the monument as found and as set or reset: SET 3/4" IRON PIPE WITH PLASTIC PLUG "LS 6792", SET RAILROAD SPIKE TAGGED "LS 6792"

SURVEYOR'S STATEMENT

This Corner Record was prepared by me or under my direction in conformance with the Land

Surveyors' Act on AUGUST 7 2007.

Signed [Signature] L.S. or R.C.E. Number 6792
 Exp. 9-30-08

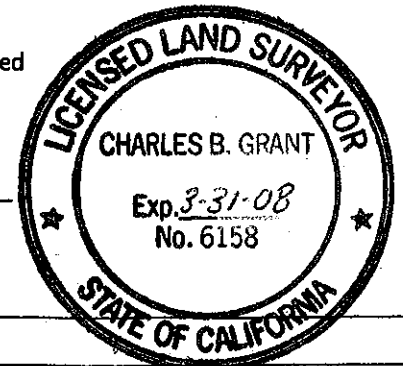


COUNTY SURVEYOR'S STATEMENT

This Corner Record was received _____ 20 _____ and examined

and filed JANUARY 15 2008.

Signed Charles B. Grant L.S. 6158 Title DEPUTY COUNTY SURVEYOR



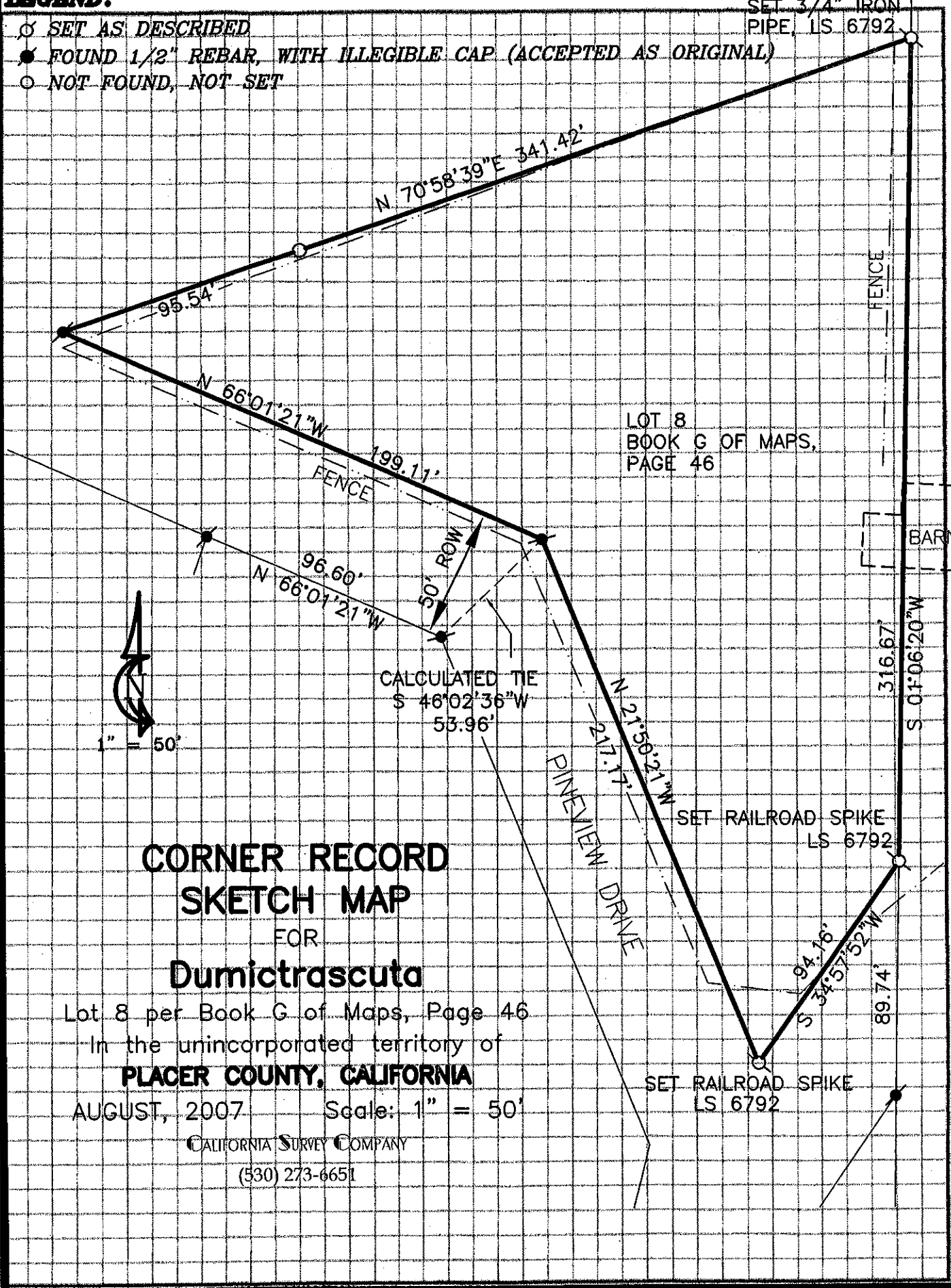
County Surveyor's Comment _____

BOOK 11 CORNER RECORDS PAGE 37

LEGEND:

- SET AS DESCRIBED
- FOUND 1/2" REBAR, WITH ILLEGIBLE CAP (ACCEPTED AS ORIGINAL)
- NOT FOUND, NOT SET

SET 3/4" IRON PIPE, LS 6792



**CORNER RECORD
SKETCH MAP
FOR
Dumictrascuta**

Lot 8 per Book G of Maps, Page 46
 In the unincorporated territory of
PLACER COUNTY, CALIFORNIA
 AUGUST, 2007 Scale: 1" = 50'

CALIFORNIA SURVEY COMPANY
 (530) 273-6651

BOOK 11 CORNER RECORDS PAGE 37