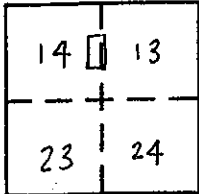


CORNER RECORD

COUNTY OF PLACER, CALIFORNIA

City of ROCKLIN Document Number 200800A

Brief Legal Description SD 88-04 STANFORD RANCH PHASE II, LOT 2 P-MAPS-80



PORTION
SEC 13 & 14
T. 11 N.,
R. 6 E.,
M.D.M.

CORNER TYPE

Government Corner Control
 Meander Property
 Rancho Other
 Date of Survey 9-28-07

COORDINATES
(Optional)

N. _____
 E. _____
 Zone _____ Datum _____
 Elev. _____

Corner — Left as found Found and tagged Established Reestablished Rebuilt

Identification and type of corner found: Evidence used to identify or procedure used to establish or reestablish corner:

FOUND 2" BRASS CAP STAMPED R.C.E. 21478 AND R.R. SPIKES
STAMPED R.C.E. 21478 PER SD. 88-04 STANFORD RANCH PHASE II,
LOT 2 PER BOOK P OF MAPS, PAGE 80.
PERFORMED TIE OUT SURVEY OF FOUND MONUMENTS.

A description of the physical condition of the monument as found and as set or reset:

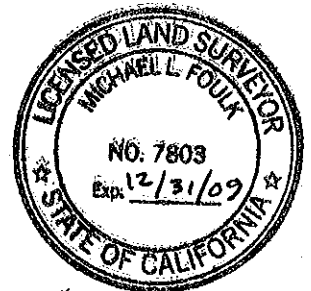
SET 2" BRASS DISK STAMPED LS 7803 IN MONUMENT WELL AND
R.R. SPIKES WITH CENTER PUNCH AND STAMPED LS7803 AFTER ASPHALT OVERLAY

SURVEYOR'S STATEMENT

This Corner Record was prepared by me or under my direction in conformance with the Land

Surveyors' Act on MARCH 6 20 08.

Signed Michael L. Foulk L.S. or R.C.E. Number 7803

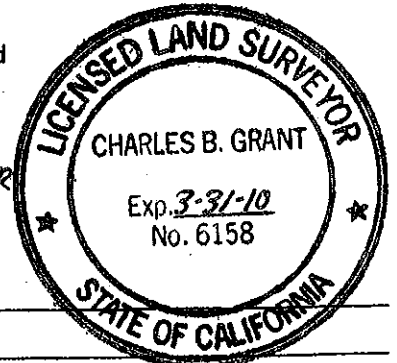


COUNTY SURVEYOR'S STATEMENT

This Corner Record was received _____ 20 _____ and examined

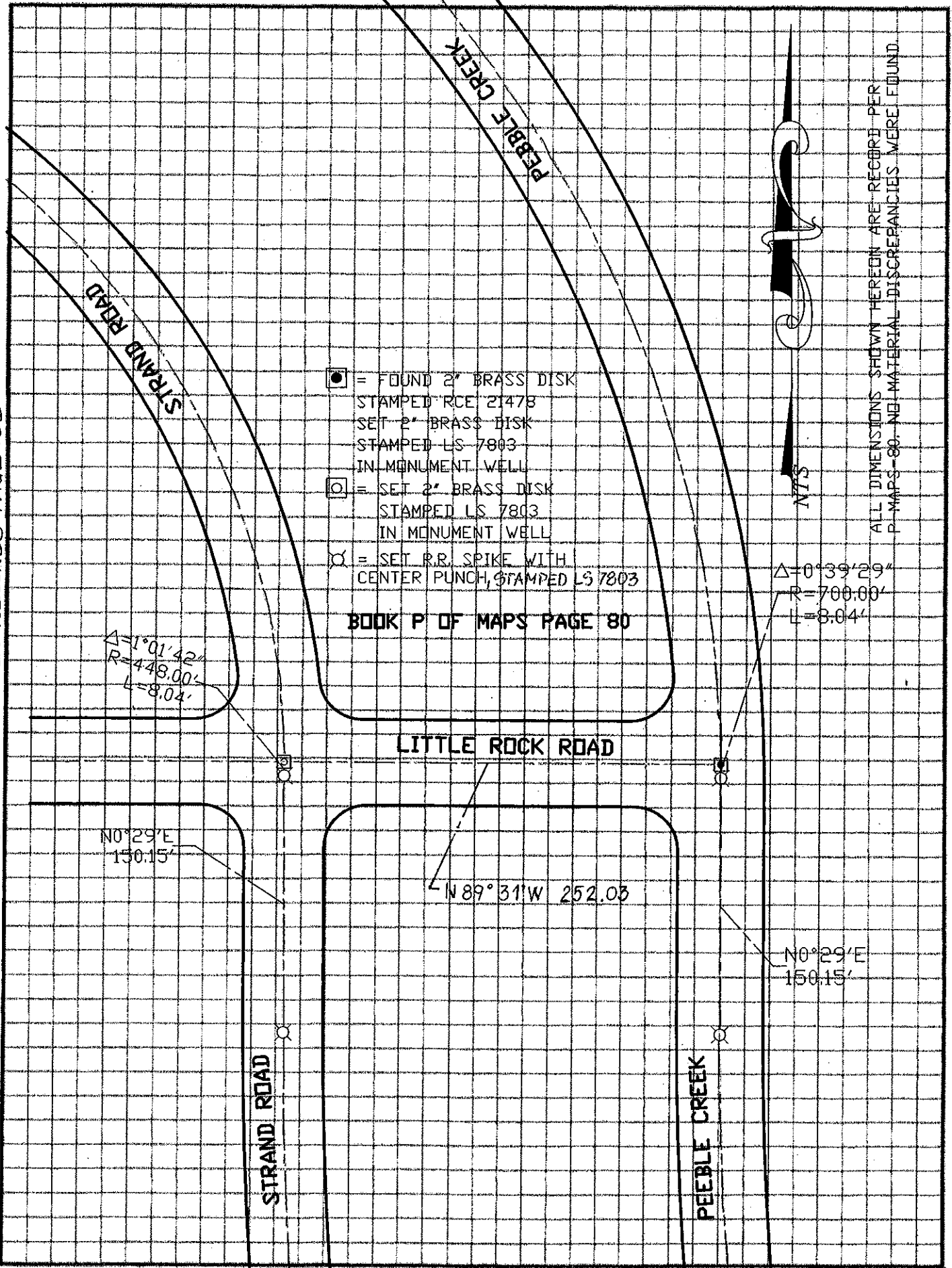
and filed MARCH 28 20 08.

Signed Charles B. Grant Title DEPUTY COUNTY SURVEYOR
LS 6158 LICENSE EXPIRES 3-31-10



County Surveyor's Comment _____

BOOK 11 CORNER RECORDS PAGE 100



- = FOUND 2" BRASS DISK
STAMPED RCE 21478
SET 2" BRASS DISK
STAMPED LS 7803
IN MONUMENT WELL
- = SET 2" BRASS DISK
STAMPED LS 7803
IN MONUMENT WELL
- ⊗ = SET R.R. SPIKE WITH
CENTER PUNCH, STAMPED LS 7803

BOOK P OF MAPS PAGE 80

$\Delta = 1^{\circ}01'42''$
 $R = 448.00'$
 $L = 8.04'$

$\Delta = 0^{\circ}39'29''$
 $R = 700.00'$
 $L = 8.04'$

N0°29'E
150.15'

N89°31'W 252.03

N0°29'E
150.15'