

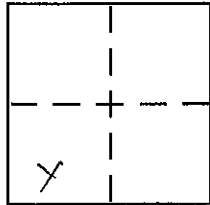
CORNER RECORD

Document Number 20070006

City of ROSEVILLE

County of PLACER, California

Brief Legal Description REESTABLISH A POINT ON THE CENTERLINE OF PLEASANT GROVE BOULEVARD AT THE BEGINNING OF CURVE ±564' WEST OF THE CENTERLINE INTERSECTION OF PLEASANT GROVE BOULEVARD AND MICHENER DRIVE.



CORNER TYPE

S29 Government Corner Control
 T11N Meander Property
 RGE Rancho Other
 MDM Date of Survey 9/04/07

COORDINATES (Optional)

N. _____
 E. _____
 Zone _____ NAD27 NAD83
 NAD83 Epoch _____
 Elev. _____
 Vert. Datum: NGVD29 NAVD88
 Meas. Units: Metric Imperial

Corner - Left as found Found and tagged Established Reestablished Rebuilt

Identification and type of corner found: Evidence used to identify or procedure used to establish or reestablish the corner: THE COPPERWELD MONUMENT IN MONUMENT WELL ON THE CENTERLINE OF PLEASANT GROVE BOULEVARD AT THE BEGINNING OF CURVE ±564' WEST OF THE CENTERLINE INTERSECTION OF PLEASANT GROVE BOULEVARD AND MICHENER DRIVE AS SHOWN ON THE PLAT OF "NORTHWEST ROSEVILLE SPECIFIC PLAN UNIT NO. 2" FILED IN BOOK Q OF MAPS AT PAGE 56 WAS NOT FOUND. REESTABLISHED POSITION OF CENTERLINE POINT USING RECORD DATA PER S MAPS 58 AND S MAPS 3 BETWEEN FOUND CENTERLINE MONUMENTS.

A description of the physical condition of the monument as found and as set or reset: SET 1-1/2" BRASS DISK STAMPED PLS 7350 IN MONUMENT WELL ON 9/04/07.

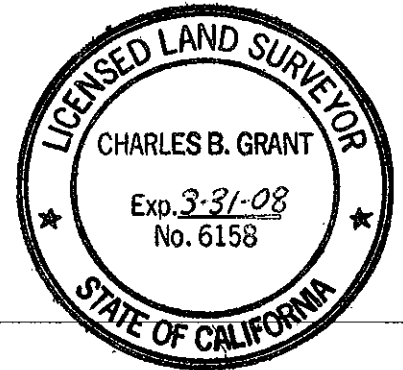
SURVEYOR'S STATEMENT

This Corner Record was prepared by me or under my direction in conformance with the Land Surveyor's Act on SEPTEMBER 27, 2007
Signed Christopher J. Gorges P.L.S. or R.C.E. No. PLS 7350
CHRISTOPHER J. GORGES



COUNTY SURVEYOR'S STATEMENT

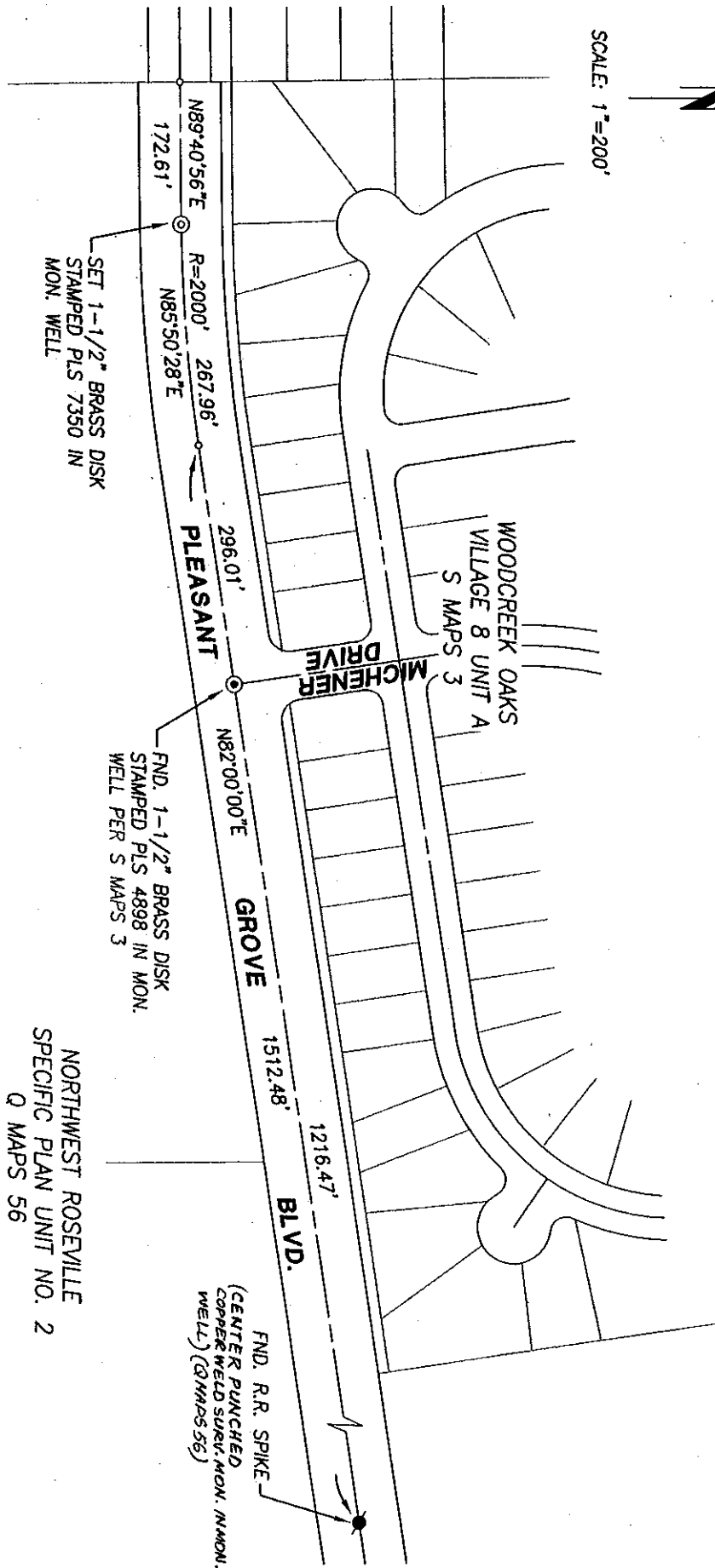
This Corner Record was received _____
and examined and filed FEB. 7 2008
Signed Charles B. Grant (P.L.S.) or R.C.E. No. 6158
Title DEPUTY COUNTY SURVEYOR



County Surveyor's Comment _____

BOOK 11 CORNER RECORDS, PAGE 70

SCALE: 1"=200'



NORTHWEST ROSEVILLE
SPECIFIC PLAN UNIT NO. 2
Q MAPS 56