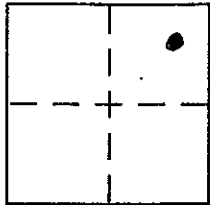


CORNER RECORD

Document Number _____

City of UNINCORPORATED AREA County of PLACER, California

Brief Legal Description LOT 255 ALPINE MEADOWS ESTATES UNIT #8
BOOK "I" OF MAPS PAGE 53 P.C.R.



SEC. 4
T. 15N.
R. 16E.
M.O.M.

CORNER TYPE

Government Corner Control
Meander Property
Rancho Other
Date of Survey 5/25/06

COORDINATES (Optional)

N. _____
E. _____
Zone _____ NAD27 NAD83
NAD83 Epoch _____
Elev. _____
Vert. Datum: NGVD29 NAVD88
Meas. Units: Metric Imperial

Corner - Left as found Found and tagged Established Reestablished Rebuilt

Identification and type of corner found: Evidence used to identify or procedure used to establish or reestablish the corner:

- = FOUND 5/8" REBAR W/PLASTIC CAP, L.S. 4227 (UNLESS OTHERWISE NOTED)
- = FOUND 3/4" REBAR, NO TAG
- ✕ = FOUND RAILROAD SPIKE, PER "I" MAPS/53 P.C.R.

A description of the physical condition of the monument as found and as set or reset:

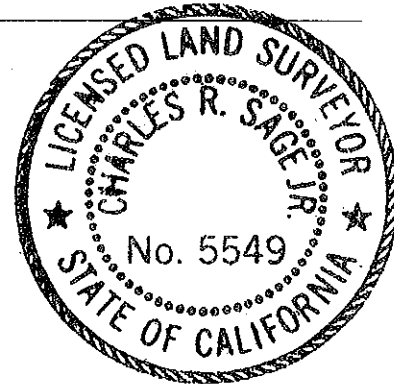
0' = SET BATHY MONUMENT W/ NAIL + TAG L.S. 5549

JN. 06033

SURVEYOR'S STATEMENT

This Corner Record was prepared by me or under my direction in conformance with the Land Surveyor's Act on MAY 26 2006

Signed [Signature] P.L.S or R.C.E. No. L.S. 5549
LIC. EXP. 6/30/07



COUNTY SURVEYOR'S STATEMENT

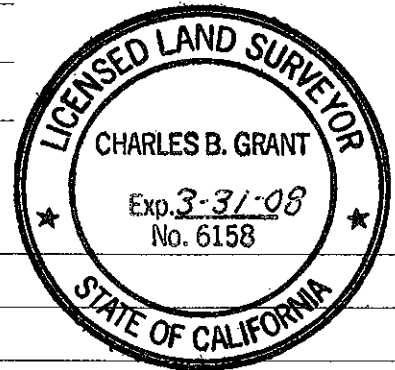
This Corner Record was received _____

and examined and filed JANUARY 29, 2008

Signed Charles B. Grant (P.L.S or R.C.E. No. 6158)

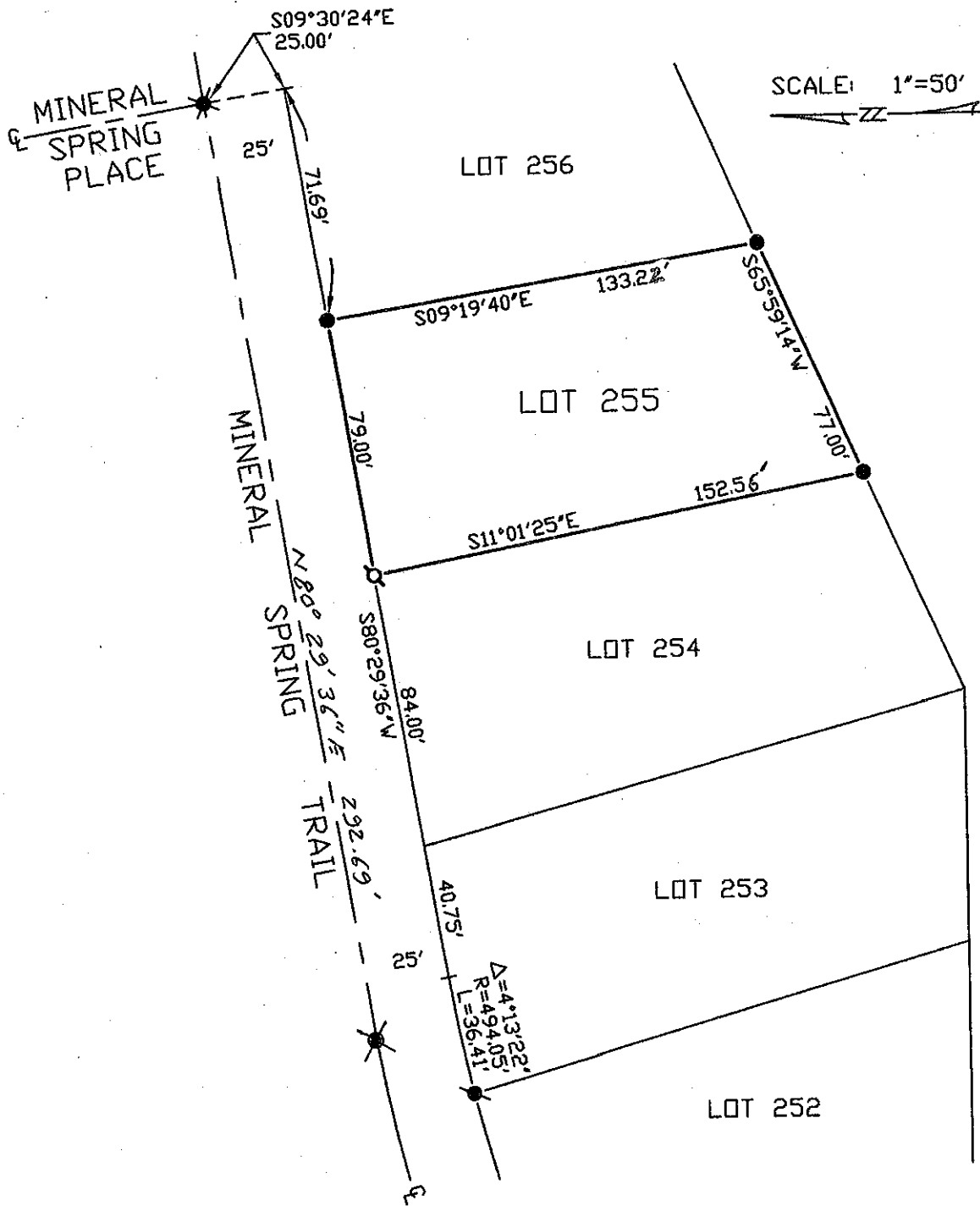
Title DEPUTY COUNTY SURVEYOR

County Surveyor's Comment _____



BOOK 11 CORNER RECORDS PAGE 62

NOTE: THE BEARING AND DISTANCES SHOWN ARE RECORD PER "I"/MAPS/53 P.C.R.
 NO MATERIAL DISCREPANCIES WITH RECORD INFORMATION WERE FOUND.



BOOK 11 CORNER RECORDS PAGE 62