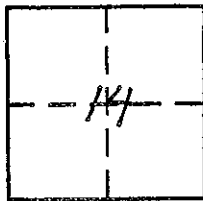


CORNER RECORD

COUNTY OF PLACER, CALIFORNIA

City of _____ Document Number _____

Brief Legal Description A PORTION OF LOT 10, TRACT NO. 290 FOLSOM LAKE ESTATES BOOK J OF MAPS, PAGE 90



CORNER TYPE

Government Corner Control
Meander Property
Rancho Other
Date of Survey MARCH, 2007

COORDINATES (Optional)

N. _____
E. _____
Zone _____ Datum _____
Elev. _____

Corner — Left as found Found and tagged Established Reestablished Rebuilt

Identification and type of corner found: Evidence used to identify or procedure used to establish or reestablish corner:

FROM SURVEY MONUMENTS SHOWN AS FOUND, AND RECORD DATA SHOWN ON BOOK J OF MAPS, PAGE 90 WERE USED TO REESTABLISH THE LOCATION OF SURVEY MONUMENTS SHOWN AS SET.

A description of the physical condition of the monument as found and as set or reset:

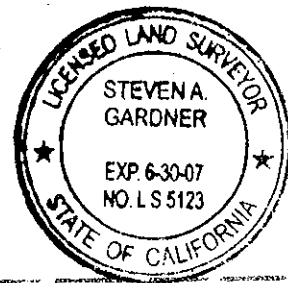
- SURVEY MONUMENT SHOWN AS FOUND
- ◊ SET 3/4" REBAR WITH PLASTIC CAP STAMPED L.S. 5123
- DIMENSION POINT

SURVEYOR'S STATEMENT

This Corner Record was prepared by me or under my direction in conformance with the Land

Surveyors' Act on MAY 10, 2007.

Signed Stu A. Gardner (L.S.) or R.C.E. Number 5123
EXPIRATION DATE: 06-30-07

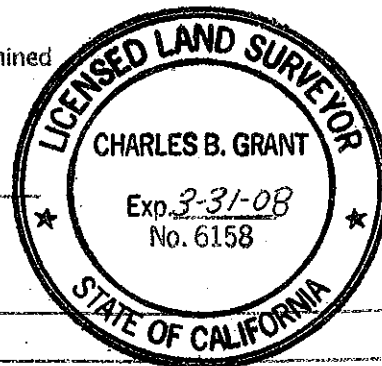


COUNTY SURVEYOR'S STATEMENT

This Corner Record was received _____ 20____ and examined

and filed JANUARY 29 2008 20____

Signed Charles B. Grant Title DEPUTY COUNTY SURVEYOR
LS 6158

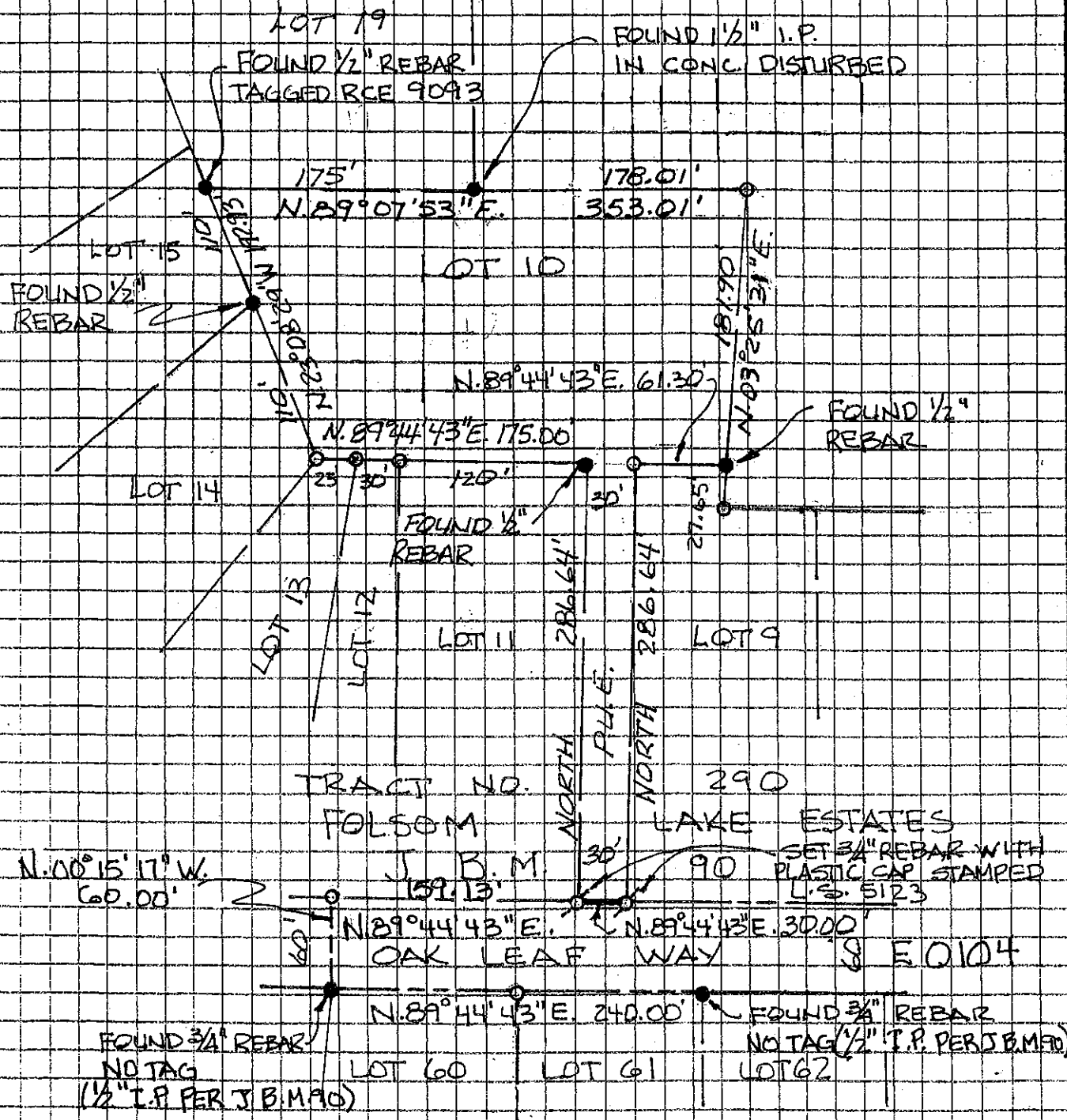


County Surveyor's Comment _____

BOOK 11 CORNER RECORDS PAGE 54



SCALE: 1"=100'



BOOK 11 CORNER RECORDS PAGE 54