

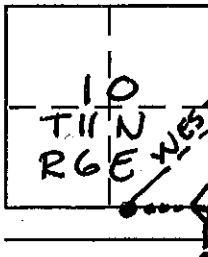
CORNER RECORD

Document Number \_\_\_\_\_

City of ROCKLIN CALIF

County of PLACER, California

Brief Legal Description SOUTH EAST COR SECTION 10, T11 N. RGE MDM.



CORNER TYPE

Government Corner  Control   
Meander  Property   
Rancho  Other   
Date of Survey 3-8-04

COORDINATES (Optional)

N. \_\_\_\_\_  
E. \_\_\_\_\_  
Zone \_\_\_\_\_ NAD27  NAD83   
NAD83 Epoch \_\_\_\_\_  
Elev. \_\_\_\_\_  
Vert. Datum: NGVD29  NAVD88   
Meas. Units: Metric  Imperial

Corner - Left as found  Found and tagged  Established  Reestablished  Rebuilt

Identification and type of corner found: Evidence used to identify or procedure used to establish or reestablish the corner:

SET CONSTRUCTION TIES TO SECTION CORNER AS SHOWN ON BOOK 31 OF PARCEL MAPS AT PAGE 73. TIED OTHER EX. MONUMENTS ON LINE MASONRY WALL CONSTRUCTION WILL DISTURB OR DESTROY EXISTING MONUMENTS.

A description of the physical condition of the monument as found and as set or reset:

SEC COR. FOUND 3/4" IP W/ LSTAG #3475 FLUSH OR AS SHOWN ON PAGE 2 SOUTH LINE PARCEL "C" 31 PM 73. FOUND 4 MONUMENT AS SHOWN ON PAGE 2 OF 2

SURVEYOR'S STATEMENT

This Corner Record was prepared by me or under my direction in conformance with the Land Surveyor's Act on 3-08-04

Signed William E Mitchell L.S. or R.C.E. No. LS-3475



COUNTY SURVEYOR'S STATEMENT

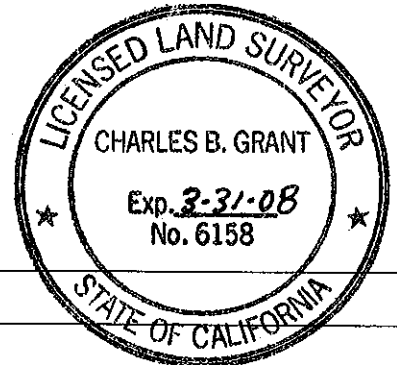
This Corner Record was received 09-17-07

and examined and filed OCT. 18 2007

Signed Charles B. Grant P.L.S. or R.C.E. No. 6158

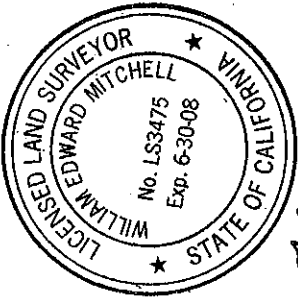
Title DEPUTY COUNTY SURVEYOR

County Surveyor's Comment \_\_\_\_\_

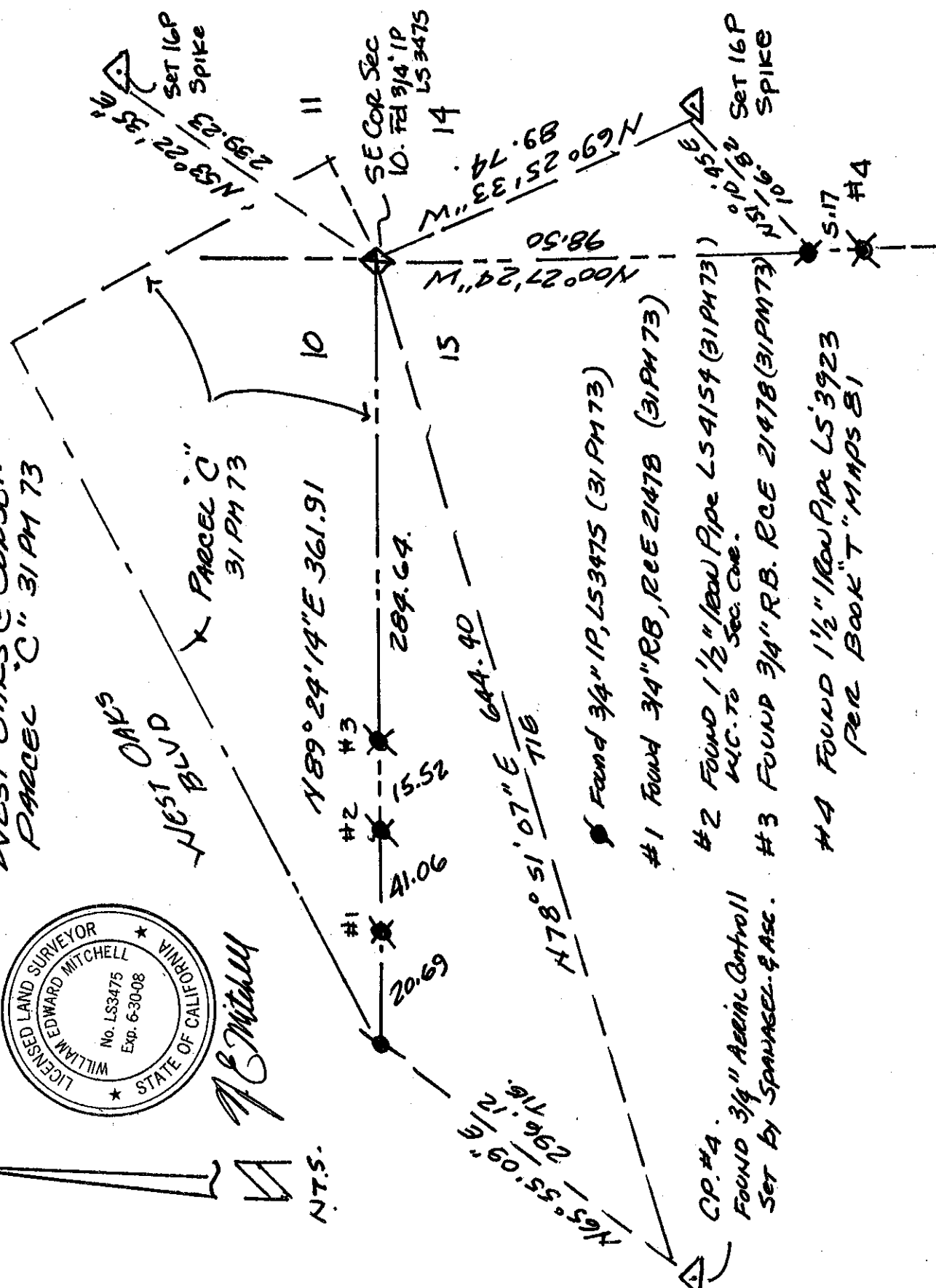


BOOK 10 CORNER RECORDS PAGE 86

CONSTRUCTION TIES.  
WEST OAKS @ SUNSET.  
PARCEL "C" 31 PM 73



W E Mitchell



WEST OAKS  
WEST BULD  
PARCEL "C"  
31 PM 73

N 89° 29' 14" E 361.91

289.64

N 78° 51' 07" E 644.90

15.52

41.06

20.69

N 69° 25' 33" W 89.74

N 100° 27' 24" W 98.50

Found 3/4" IP, LS3475 (31 PM 73)

#1 Found 3/4" RB, RCE 21478 (31 PM 73)

#2 Found 1/2" Row Pipe LS4154 (31 PM 73)  
N.C. TO SEC. COR.

#3 Found 3/4" RB, RCE 21478 (31 PM 73)

#4 Found 1/2" Row Pipe LS3923  
PER BOOK "T" MAPS B1

CP #4.  
FOUND 3/4" Aerial Control  
SET BY SPANSEL & ASS.

Set 16P  
SPIKE

SE COR Sec  
10. Fd 3/4" IP  
LS 3475

Set 16P  
SPIKE

#4  
5.17