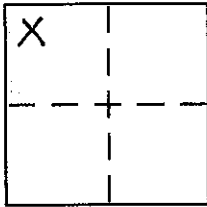


CORNER RECORD

Document Number \_\_\_\_\_

City of \_\_\_\_\_ County of \_\_\_\_\_, California

Brief Legal Description LOTS 4 & 5, BLOCK "BB", ICE LAKES SUB. No. 2, G/MAPS/1, O.R.P.C.



Sec. 35  
T. 17 N.  
R. 14 E.  
M.D.B. & M.

CORNER TYPE

Government Corner  Control   
Meander  Property   
Rancho  Other   
Date of Survey 7-19-2006

COORDINATES (Optional)

N. \_\_\_\_\_  
E. \_\_\_\_\_  
Zone \_\_\_\_\_ NAD27  NAD83   
NAD83 Epoch \_\_\_\_\_  
Elev. \_\_\_\_\_  
Vert. Datum: NGVD29  NAVD88   
Meas. Units: Metric  Imperial

Corner - Left as found  Found and tagged  Established  Reestablished  Rebuilt

Identification and type of corner found: Evidence used to identify or procedure used to establish or reestablish the corner:

USED THE RECORD DIMENSIONS AND THE FOUND MONUMENTS PER G/MAPS/1, O.R.P.C., TO REESTABLISH THE MISSING CORNERS OF LOT 4, BLOCK "BB", AS SHOWN ON THE ACCOMPANYING PLAT.

A description of the physical condition of the monument as found and as set or reset:

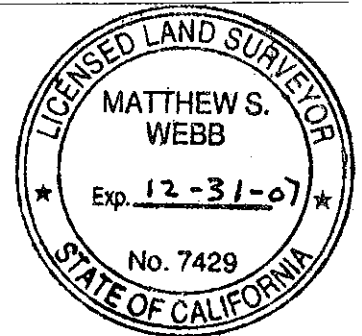
SET 5/8" REBAR WITH YELLOW PLASTIC CAP MARKED LS 7429.

SURVEYOR'S STATEMENT

This Corner Record was prepared by me or under my direction in conformance with

the Land Surveyor's Act on July 21 2006

Signed Matthew S. Webb P.L.S. or R.C.E. No. 7429



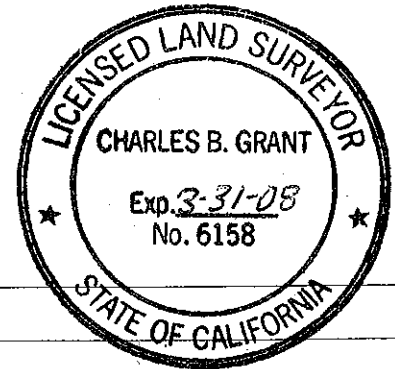
COUNTY SURVEYOR'S STATEMENT

This Corner Record was received \_\_\_\_\_

and examined and filed AUG. 3 2007

Signed Charles B. Grant P.L.S. or R.C.E. No. 6158

Title DEPUTY COUNTY SURVEYOR LICENSE EXPIRES 3-31-08



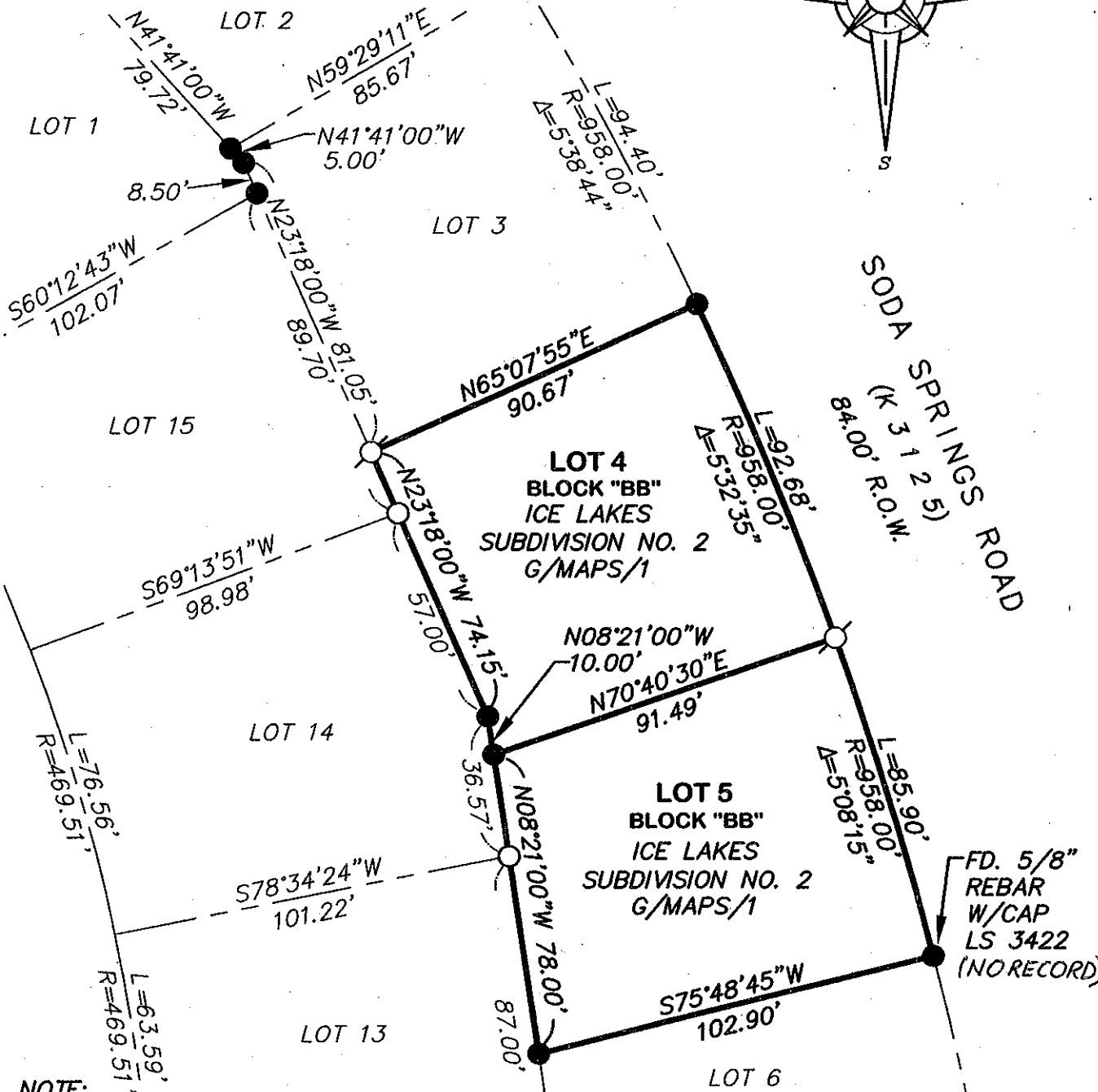
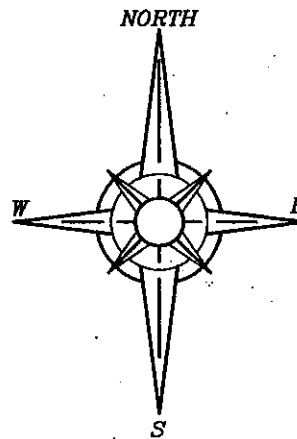
County Surveyor's Comment \_\_\_\_\_

BOOK 10 CORNER RECORDS PAGE 73

**PLAT OF SURVEY**

LOT 4 AND LOT 5, ICE LAKES SUBDIVISION NO. 2, BOOK G, OF MAPS, AT PAGE 1, OFFICIAL RECORDS PLACER COUNTY, CALIFORNIA. A PORTION OF THE N.W. 1/4 OF SECTION 35, TOWNSHIP 17 N., RANGE 14 E., M.D.B. & M.

SCALE 1" = 40' DATE OF SURVEY 7/19/2006



**NOTE:**

ALL BEARINGS AND DISTANCES SHOWN HEREON ARE RECORD PER G/MAPS/1, O.R.P.C.

- FOUND 1/2" REBAR (NO TAG), EXCEPT AS NOTED HEREON
- SET 5/8" REBAR WITH YELLOW PLASTIC CAP L.S. 7429
- DIMENSION PT (NOTHING FOUND OR SET)

J/N 1286.00

BOOK 10 CORNER RECORDS PAGE 73