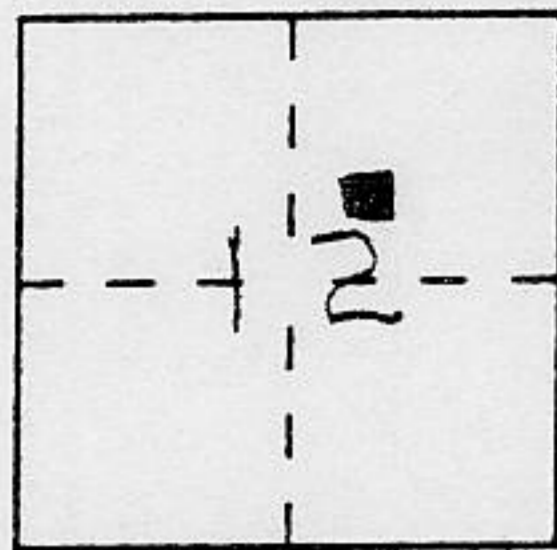


CORNER RECORD

Document Number _____

City of Kings Beach County of Placer, California

Brief Legal Description Lot 59, Kingswood Estates Unit No 1 Book I Maps, Page 11



T 16N
R 17E
M.D.M.

CORNER TYPE

Government Corner Control
 Meander Property
 Rancho Other
 Date of Survey 28 July 93

COORDINATES (Optional)

N. _____
 E. _____
 Zone _____ Datum _____
 Elev. _____

Corner — Left as found Found and tagged Established Reestablished Rebuilt

Identification and type of corner found: Evidence used to identify or procedure used to establish or reestablish the corner:

See Sketch on Back

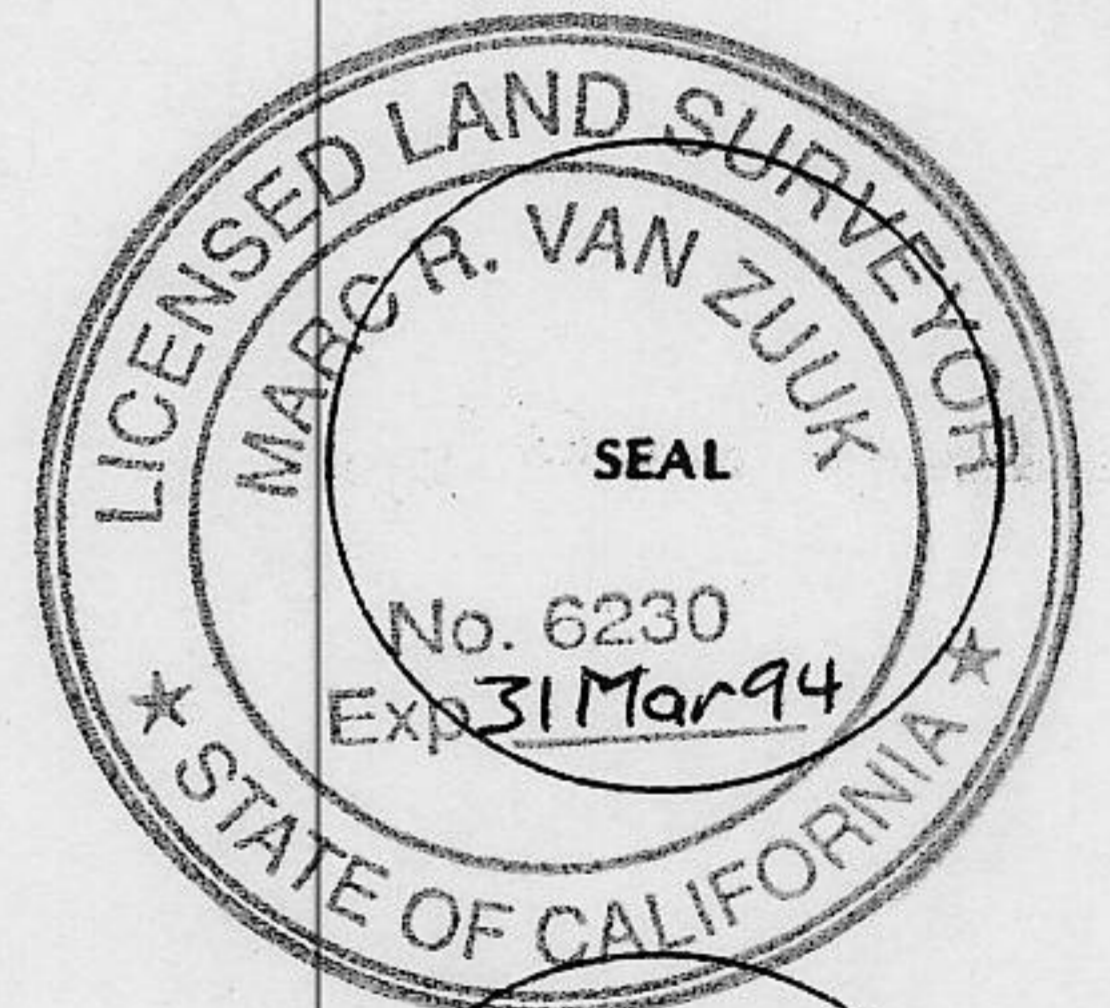
A description of the physical condition of the monument as found and as set or reset:

See Sketch on Back

SURVEYOR'S STATEMENT

This Corner Record was prepared by me or under my direction in conformance with the Land Surveyors' Act on 04 August 1993.

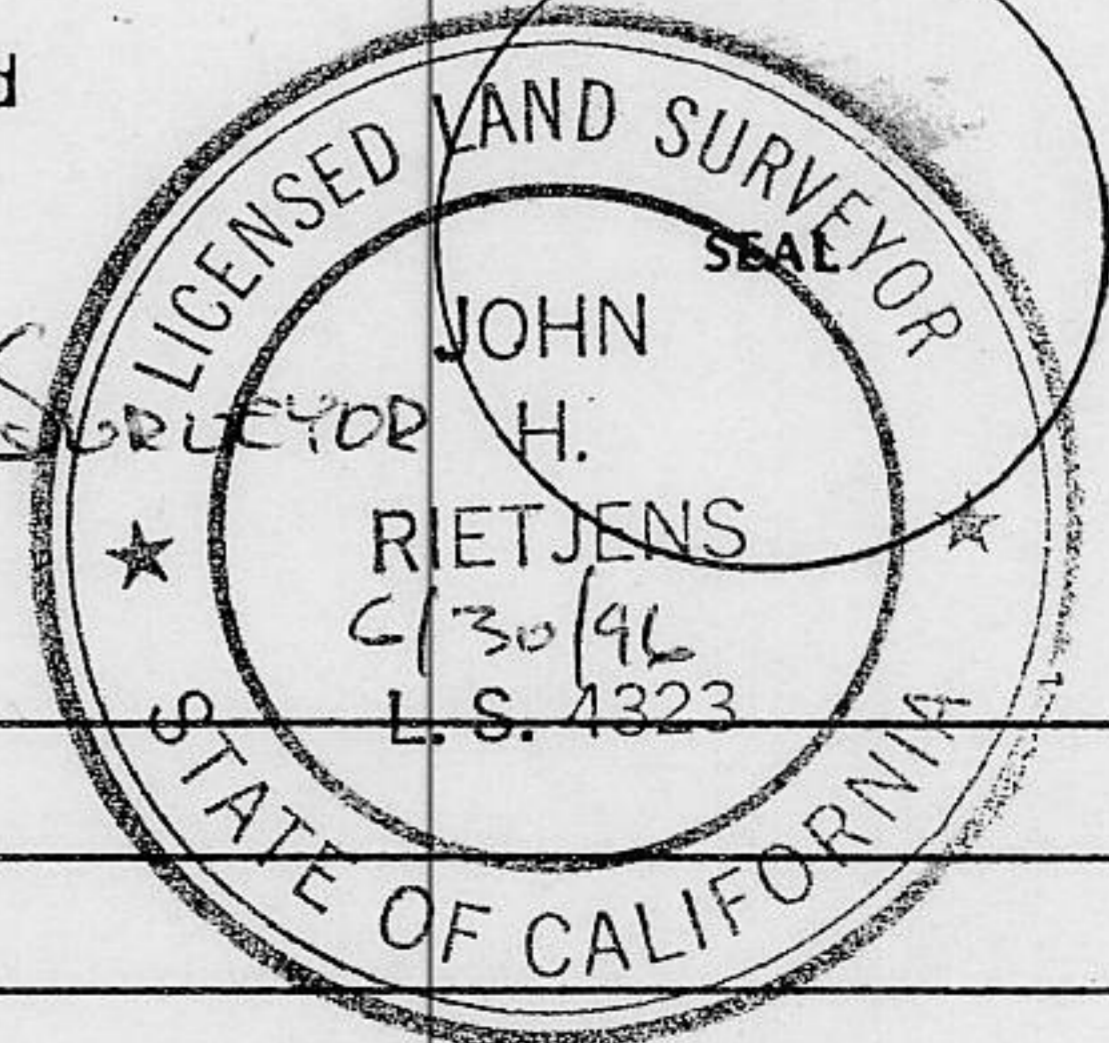
Signed [Signature] L.S. or R.C.E. Number 6230



COUNTY SURVEYOR'S STATEMENT

This Corner Record was received SEPT 22 1993 and examined and filed 9/23 1993.

Signed [Signature] Title DEPUTY COUNTY SURVEYOR

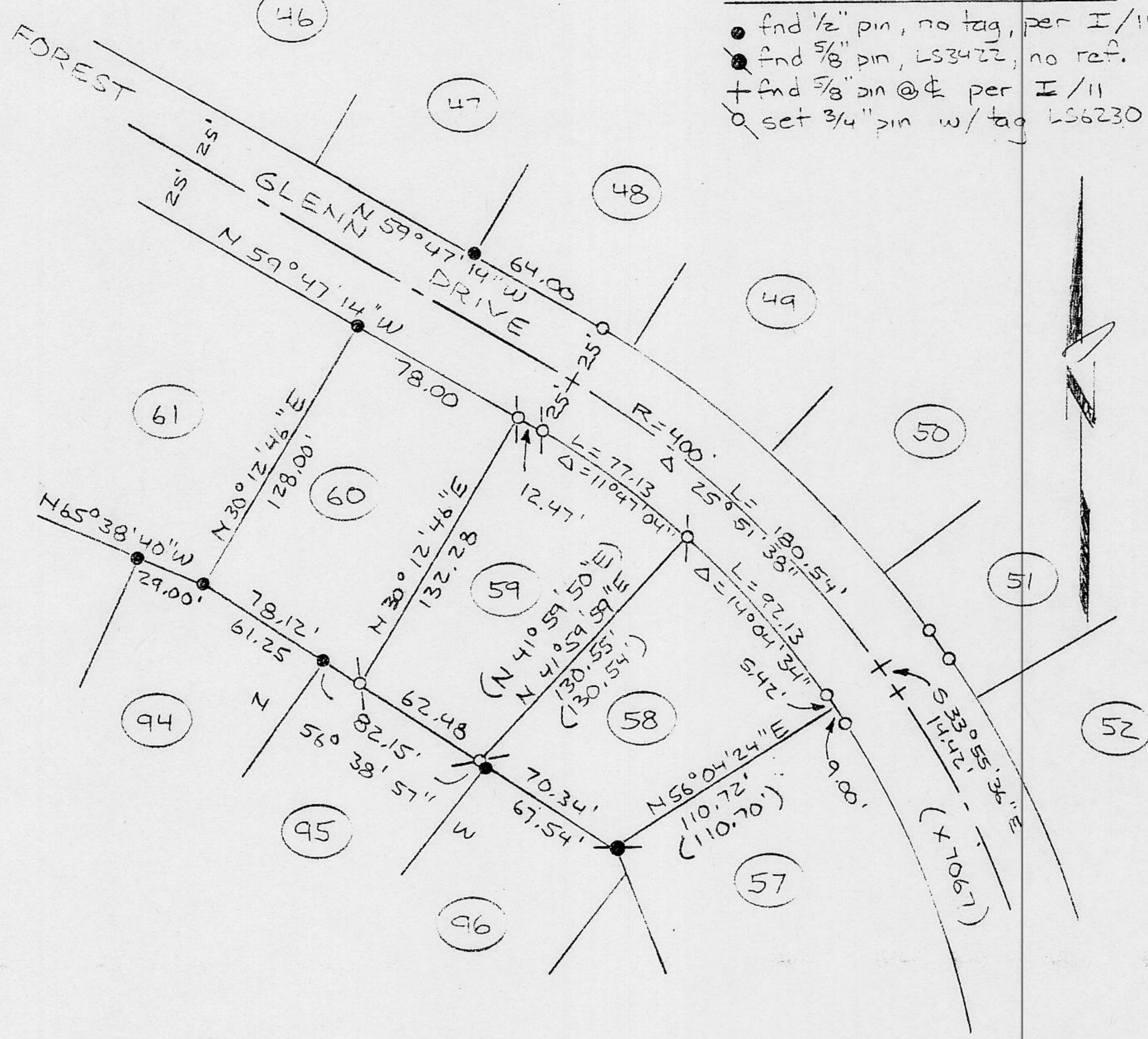


County Surveyor's Comment _____

BOOK 3 CORNER RECORDS PAGE 185

LEGEND

- fnd 1/2" pin, no tag, per I/11
- fnd 5/8" pin, LS3422, no ref.
- + fnd 5/8" pin @ E per I/11
- set 3/4" pin w/tag LS6230



PLAT OF SURVEY

Lot 59, Kingswood Estates Unit No I Book I Maps, 11
 Section 12, Township 16 North, Range 17 East M.D.M.
 County of Placer California

July 1993
 not to scale

J/N 630.17