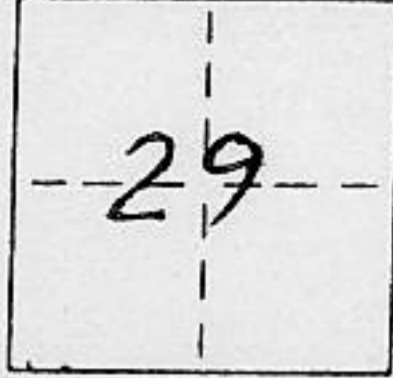


CORNER RECORD

COUNTY OF PLACER T. 16 N. R. 16 E MDB MERIDIAN CALIFORNIA

CORNER TYPE: GOV'T. CORNER MEANDER RANCHO CONTROL OTHER
 CORNER IDENTIFICATION - DATE OF VISIT JULY 26, 1993



LOT 5, BLOCK "R", SQUAW VALLEY ESTATES NO. 4, BOOK "F" PAGE 9

CORNER - LEFT AS FOUND FOUND AND TAGGED REESTABLISHED OBLITERATED CORNER REBUILT

PHYSICAL DESCRIPTION OF CORNER FOUND: EVIDENCE AND METHOD USED TO IDENTIFY OR REESTABLISH _____

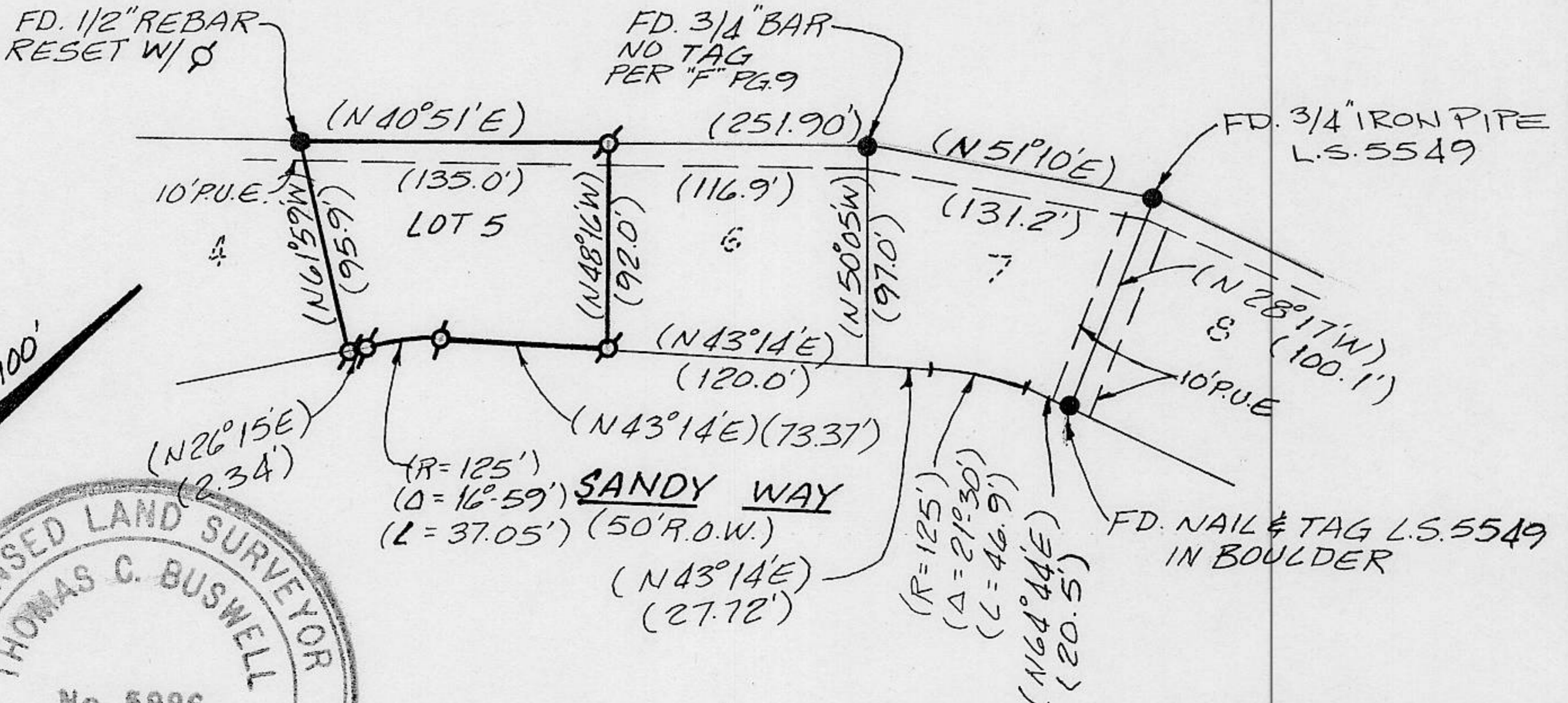
● FOUND MONUMENT AS NOTED

PHYSICAL DESCRIPTION OF MONUMENTS REBUILT OR PERPETUATED _____

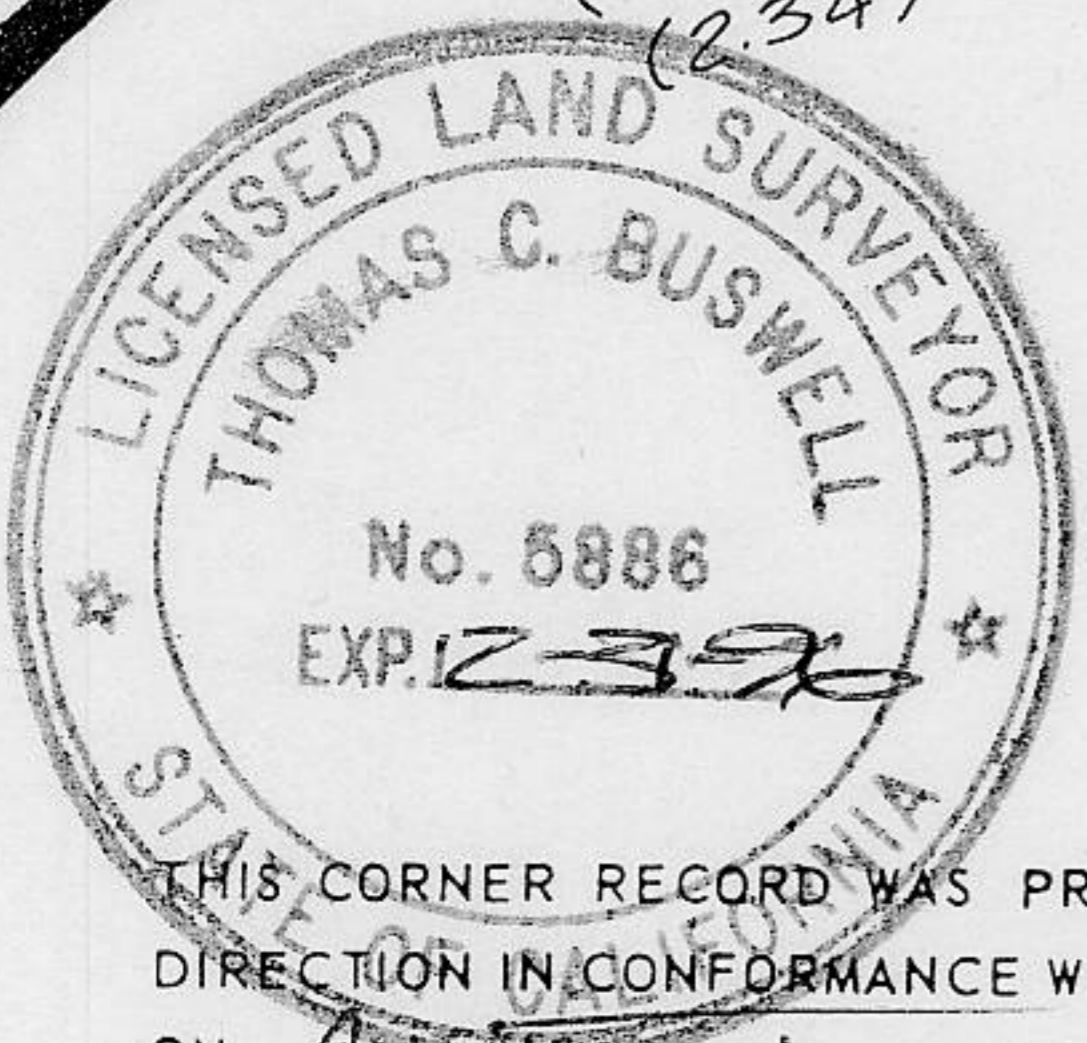
Ø SET 5/8" Ø REBAR W/ 2" METAL CAP, STAMPED L.S. 5886

CALIFORNIA COORDINATE SYSTEM ORDER: FIRST SECOND THIRD N/A

STATIONS USED: NGS (USC & GS) STATE COUNTY OTHER STATION _____ STATION _____
 ZONE _____ ELEVATION _____ NORTHINGS (Y) _____ EASTINGS (X) _____



SCALE: 1" = 100'



THIS CORNER RECORD WAS PREPARED BY ME OR UNDER MY DIRECTION IN CONFORMANCE WITH THE LAND SURVEYORS ACT ON August 19 93

SIGNED: [Signature]

L.S. or R.C.E. No.: L.S. 5886

SEAL

THIS CORNER RECORD WAS RECEIVED 9-7 1993 AND EXAMINED AND FILED 9/7 1993

BY: [Signature]
 TITLE: DEPUTY COUNTY SURVEYOR

DOCUMENT No. _____
 STATEMENT ON BACK OF SHEET

YES NO

BOOK 3 CORNER RECORDS PAGE 182