

(For County Use Only)

CORNER RECORD

COUNTY OF PLACER, T. 10 N., R. 7 E., MOUNT DIABLO MERIDIAN, STATE OF CALIFORNIA

CORNER TYPE: GOVT. CORNER MEANDER RANCHO CONTROL OTHER
CORNER IDENTIFICATION - DATE OF VISIT AUGUST 6, 1993

3

CORNER - LEFT AS FOUND FOUND AND TAGGED REESTABLISHED OBLITERATED CORNER REBUILT

PHYSICAL DESCRIPTION OF CORNER FOUND; EVIDENCE AND METHOD USED TO IDENTIFY OR REESTABLISHED

FOUND MONUMENTS PER 6 ROS 118 AND RESET AFTER CONSTRUCTION HAD REMOVED OR BURIED ORIGINAL CORNERS.

PHYSICAL DESCRIPTION OF MONUMENTS REBUILT OR PERPETUATED

SEE SKETCH

CALIFORNIA COORDINATE SYSTEM ORDER: FIRST SECOND THIRD
STATION USED: NGS (USC & GS) STATE COUNTY OTHER STATION _____ STATION _____
ZONE: _____ ELEVATION _____ NORTHING (Y) _____ EASTING (X) _____

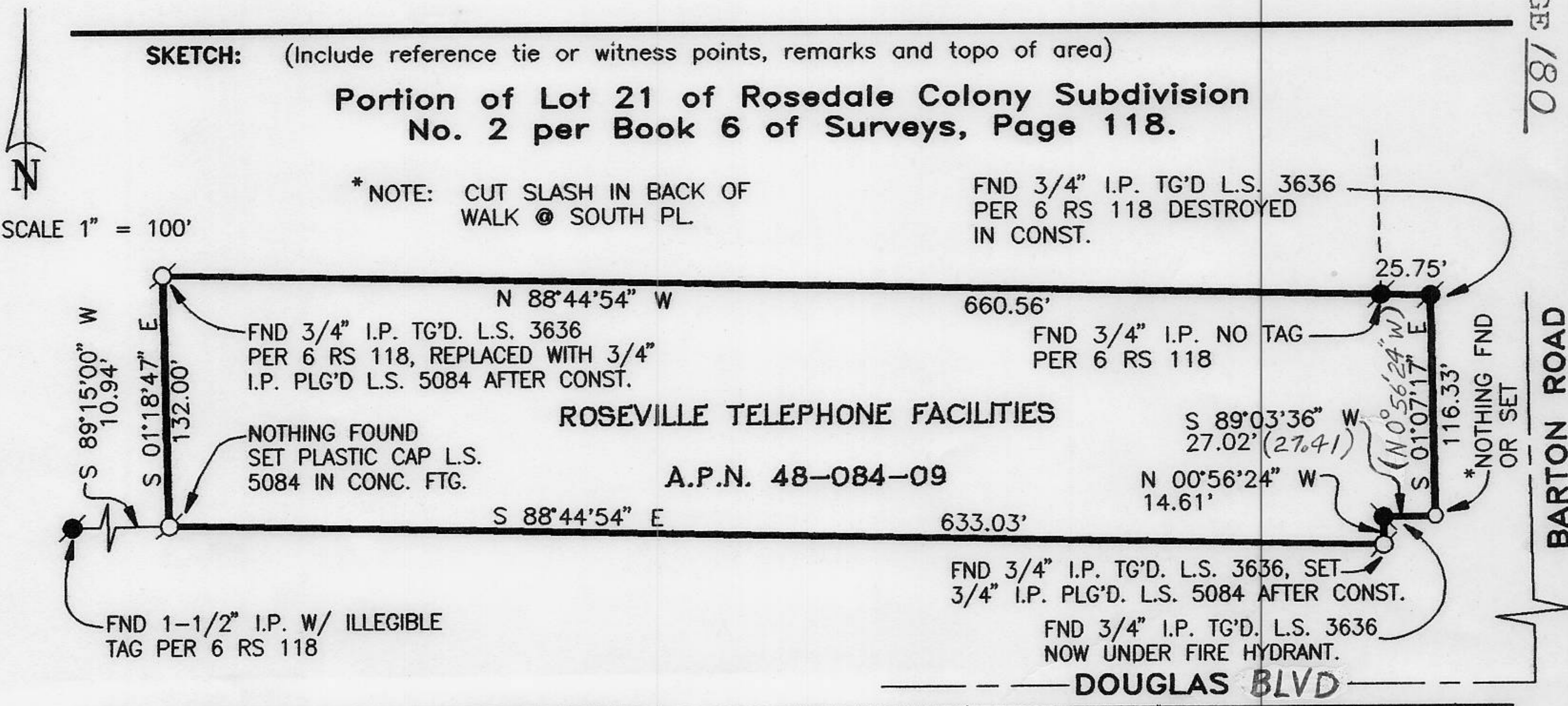
(Fold)

SKETCH: (Include reference tie or witness points, remarks and topo of area)

Portion of Lot 21 of Rosedale Colony Subdivision
No. 2 per Book 6 of Surveys, Page 118.

* NOTE: CUT SLASH IN BACK OF WALK @ SOUTH PL.

FND 3/4" I.P. TG'D L.S. 3636 PER 6 RS 118 DESTROYED IN CONST.



BOOK 3 CORNER RECORDS PAGE 180

BARTON ROAD

SURVEYOR'S CERTIFICATE

THIS CORNER RECORD WAS PREPARED BY ME OR UNDER MY DIRECTION IN CONFORMANCE WITH THE LAND SURVEYORS ACT ON AUGUST 6, 1993.

SIGNED: [Signature]
L.S. or R.C.E. No.: L.S. 5084



COUNTY SURVEYOR'S CERTIFICATE

THE CORNER RECORD WAS RECEIVED 9/2, 1993 AND EXAMINED AND FILED 9/3, 1993

BY: [Signature]
TITLE: DEPUTY COUNTY SURVEYOR

DOCUMENT NO. _____

STATEMENT ON BACK OF SHEET

YES NO