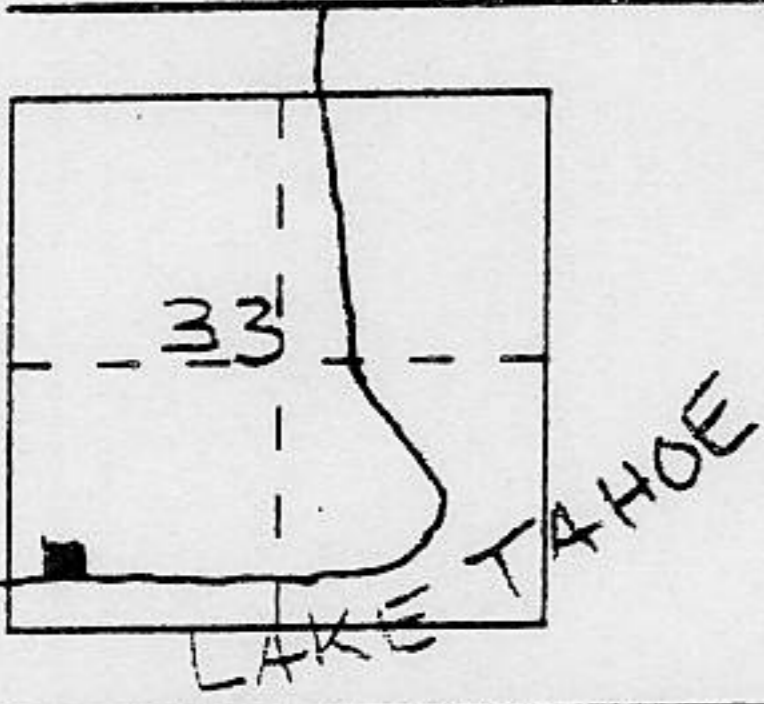


CORNER RECORD

Document Number _____

City of _____ County of Placer, California

Brief Legal Description Lot 23 Dollar Point Unit 1 F / Maps / 73



T16N
R17E
MDM

CORNER TYPE

Government Corner Control
 Meander Property
 Rancho Other
 Date of Survey 10 June 93

COORDINATES (Optional)

N. _____
 E. _____
 Zone _____ Datum _____
 Elev. _____

Corner — Left as found Found and tagged Established Reestablished Rebuilt

Identification and type of corner found: Evidence used to identify or procedure used to establish or reestablish the corner:

see sketch on back

A description of the physical condition of the monument as found and as set or reset:

see sketch on back

SURVEYOR'S STATEMENT

This Corner Record was prepared by me or under my direction in conformance with the Land Surveyors' Act on 30 July 1993.

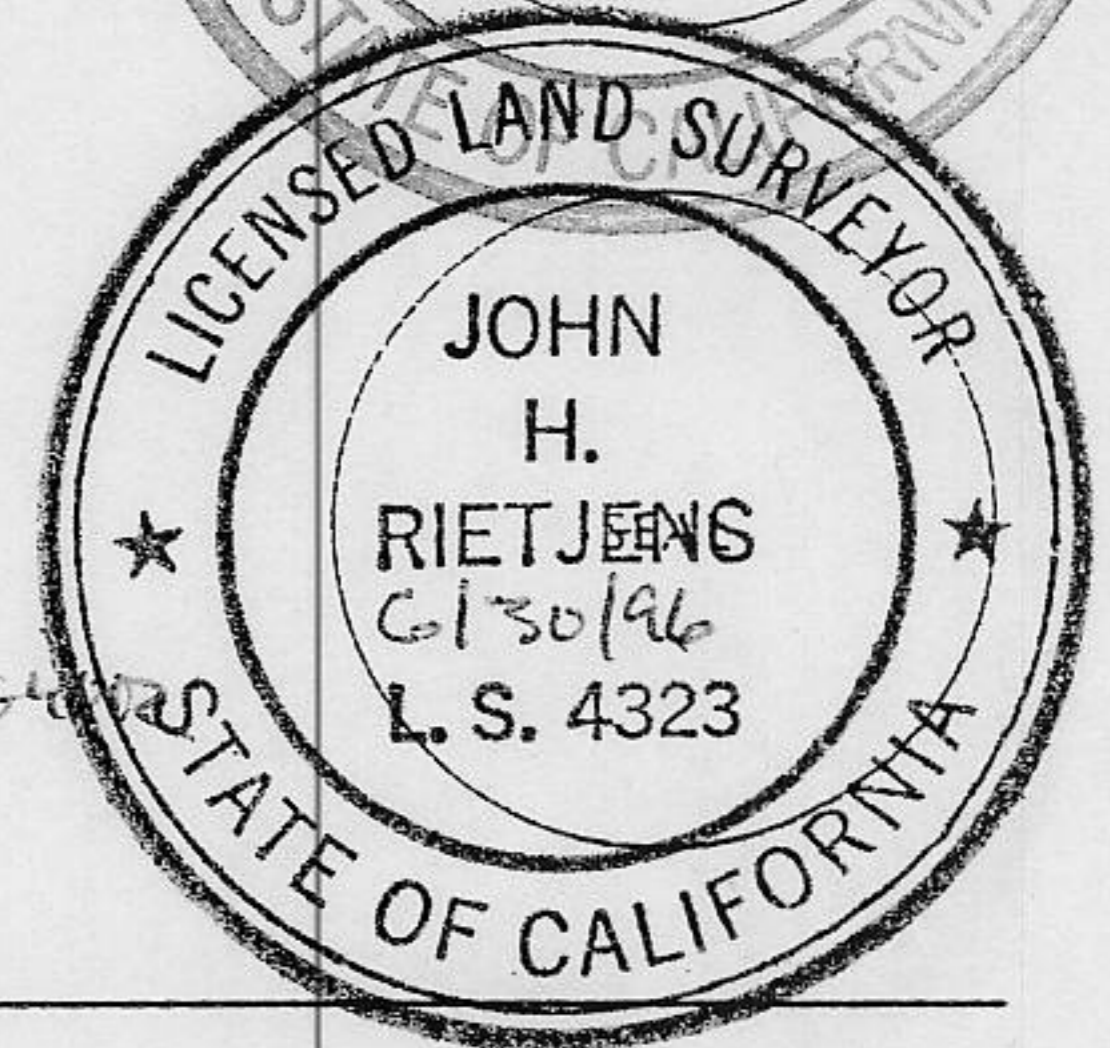
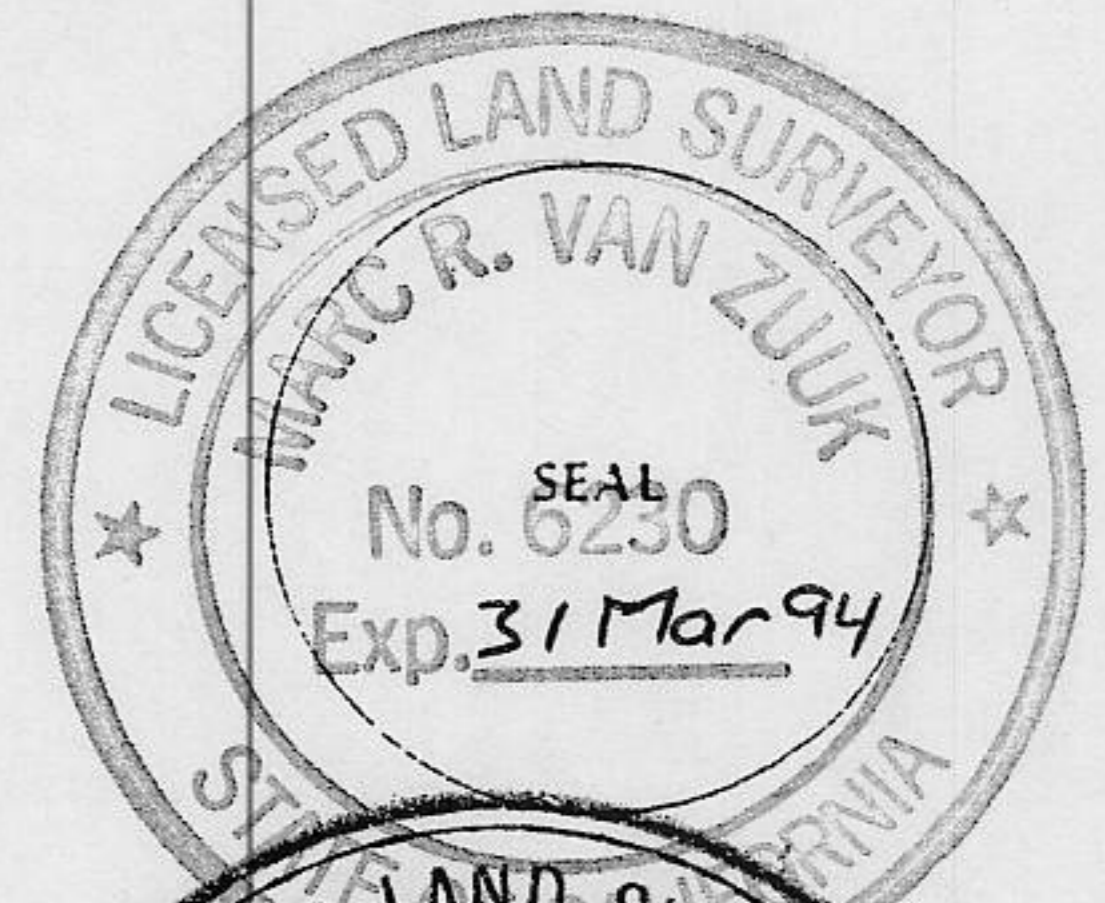
Signed [Signature] L.S. or R.C.E. Number 6230

COUNTY SURVEYOR'S STATEMENT

This Corner Record was received JULY 6 1993 and examined and filed Aug 20 1993.

Signed [Signature] Title DEPUTY COUNTY SURVEYOR

County Surveyor's Comment _____



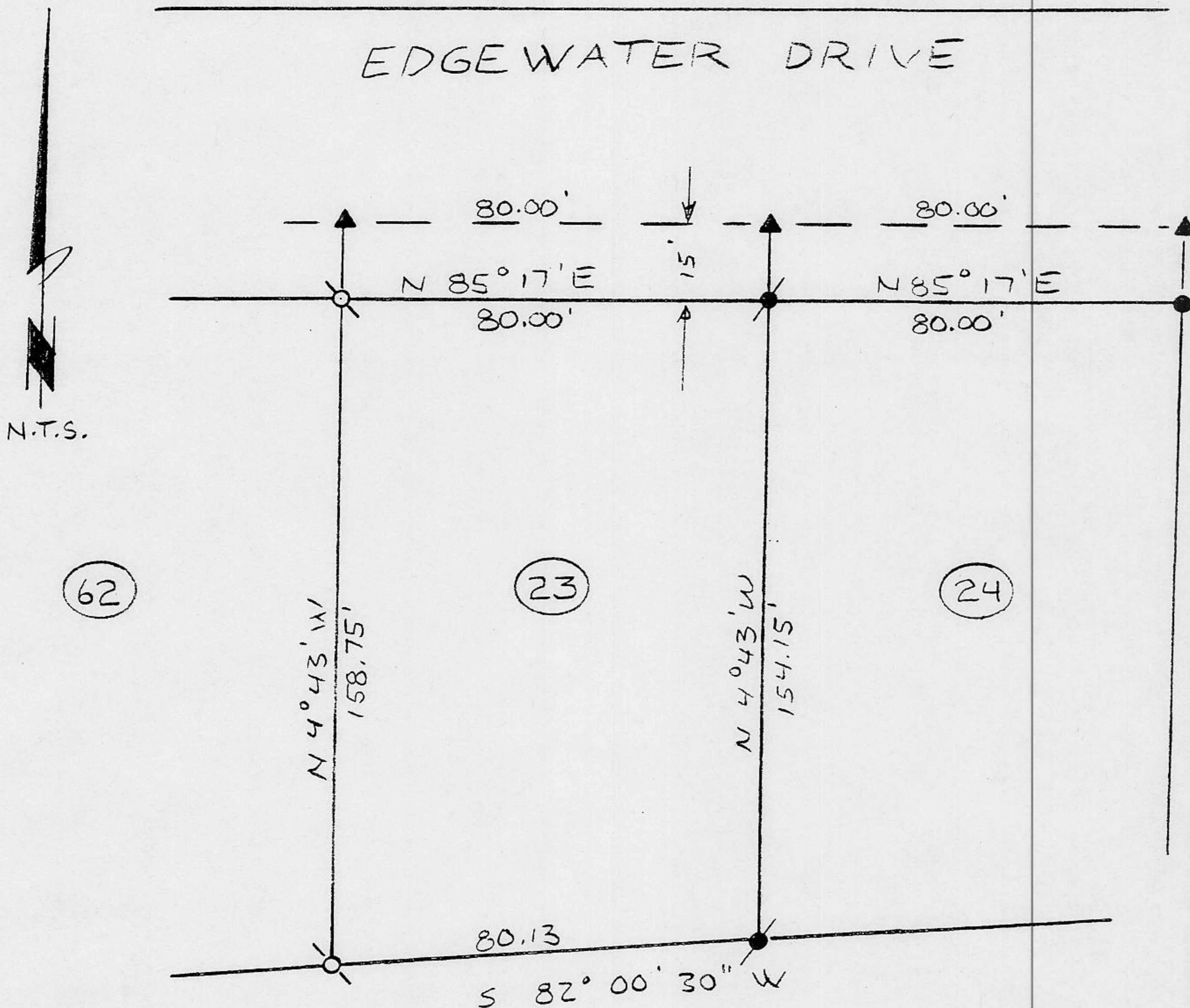
BOOK 3 CORNER RECORDS PAGE 176

PLAT OF SURVEY

Lot 23 Dollar Point Unit No 1 F/Maps/73
 Section 33, Township 16 North, Range 17 East, M.D.M.
 County of Placer California

June 1993

EDGEWATER DRIVE



LEGEND

- set 5/8" φ rebar LS 6230
- fnd 5/8" φ rebar LS 3422
- ⊙ fnd 5/8" φ rebar LS 5886
- ▲ fnd RRS on offset line

J/N 407.01
 Reese