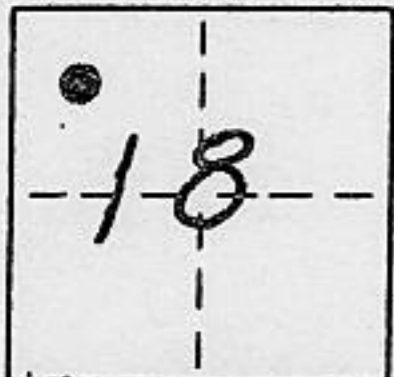


**CORNER RECORD**

COUNTY OF PLACER T. 14 N. R. 17 E. M.D.B. MERIDIAN CALIFORNIA  
 CORNER TYPE: GOV'T. CORNER  MEANDER  RANCHO  CONTROL  OTHER   
 CORNER IDENTIFICATION - DATE OF VISIT 5-20 19 93



LOTS 9 & 10 MCKINNEY ESTATES - UNIT No. 1, BOOK "F" PG. 61

CORNER - LEFT AS FOUND  FOUND AND TAGGED  REESTABLISHED OBLITERATED CORNER  REBUILT

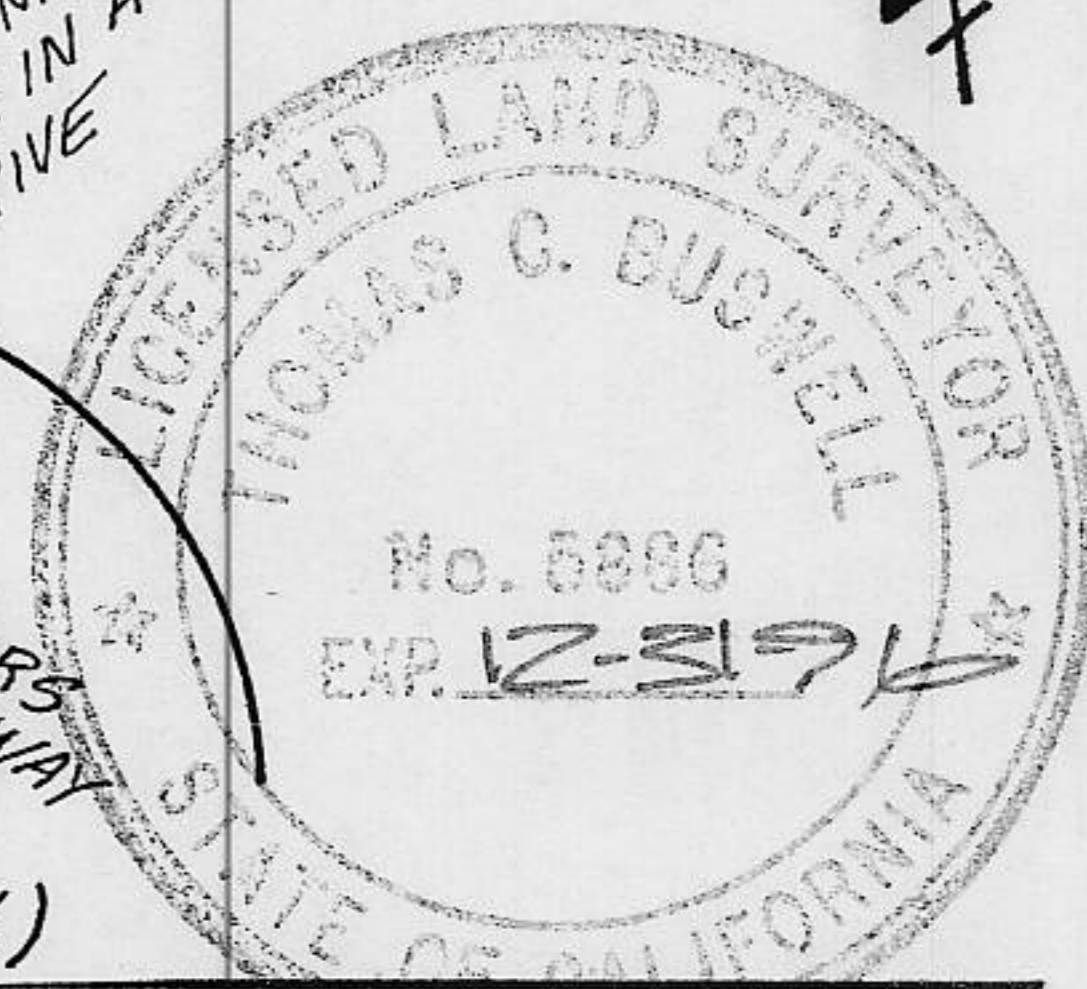
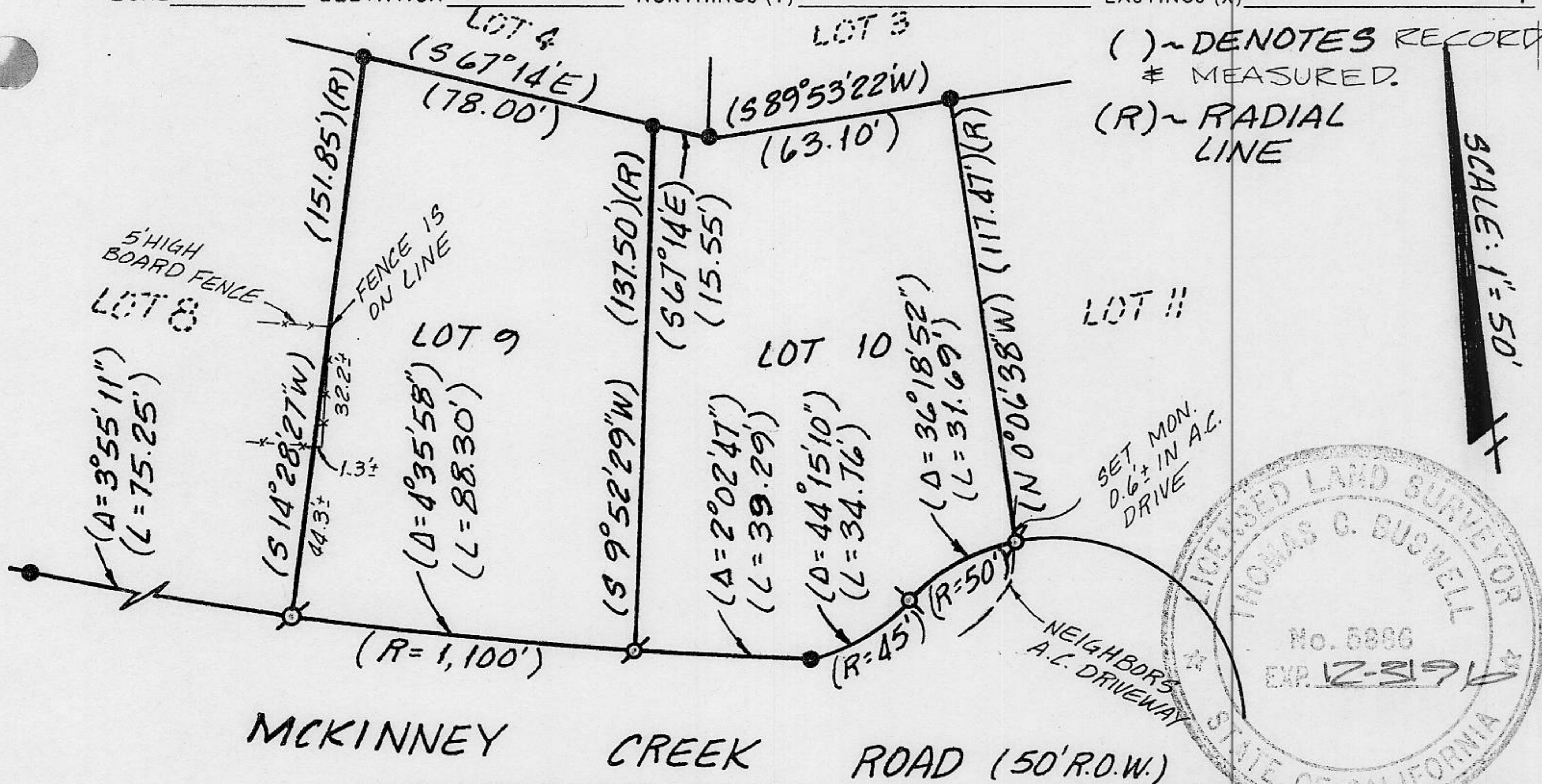
PHYSICAL DESCRIPTION OF CORNER FOUND: EVIDENCE AND METHOD USED TO IDENTIFY OR REESTABLISH

● ~ FOUND 1/2" ϕ REBAR W/ BRASS TAG L.S. 2471

PHYSICAL DESCRIPTION OF MONUMENTS REBUILT OR PERPETUATED

⊙ ~ SET 5/8" ϕ REBAR W/ 2" METAL CAP, STAMPED L.S. 5886

CALIFORNIA COORDINATE SYSTEM ORDER: FIRST  SECOND  THIRD  N/A  
 STATIONS USED: NGS (USC & GS)  STATE  COUNTY  OTHER  STATION \_\_\_\_\_ STATION \_\_\_\_\_  
 ZONE \_\_\_\_\_ ELEVATION \_\_\_\_\_ NORTHINGS (Y) \_\_\_\_\_ EASTINGS (X) \_\_\_\_\_



**SURVEYOR'S CERTIFICATE**

THIS CORNER RECORD WAS PREPARED BY ME OR UNDER MY DIRECTION IN CONFORMANCE WITH THE LAND SURVEYORS ACT ON 5-31 19 93

SIGNED: \_\_\_\_\_

L.S. or R.C.E. No.: L.S. 5886

SEAL

**COUNTY SURVEYOR'S CERTIFICATE**

THIS CORNER RECORD WAS RECEIVED JUNE 25 19 93 AND EXAMINED AND FILED 4/25 19 93

BY: John R. Rogers

TITLE: DEPUTY COUNTY SURVEYOR

DOCUMENT No. \_\_\_\_\_

STATEMENT ON BACK OF SHEET

YES  NO

BOOK 3 CORNER RECORDS PAGE 172