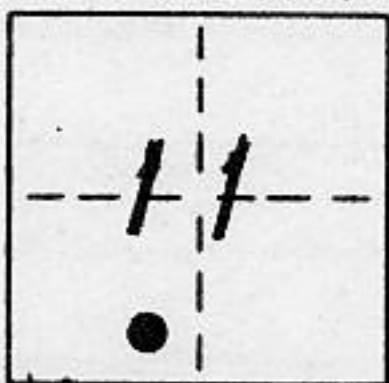


# CORNER RECORD

COUNTY OF PLACER T. 16 N R. 17 E M.D.B. MERIDIAN CALIFORNIA

CORNER TYPE: GOV'T. CORNER  MEANDER  RANCHO  CONTROL  OTHER   
 CORNER IDENTIFICATION - DATE OF VISIT MAY 5, 1993



LOT 98 TAHOE ESTATES, UNIT No.1 BOOK "D" MAPS PG. 89

CORNER - LEFT AS FOUND  FOUND AND TAGGED  REESTABLISHED OBLITERATED CORNER  REBUILT

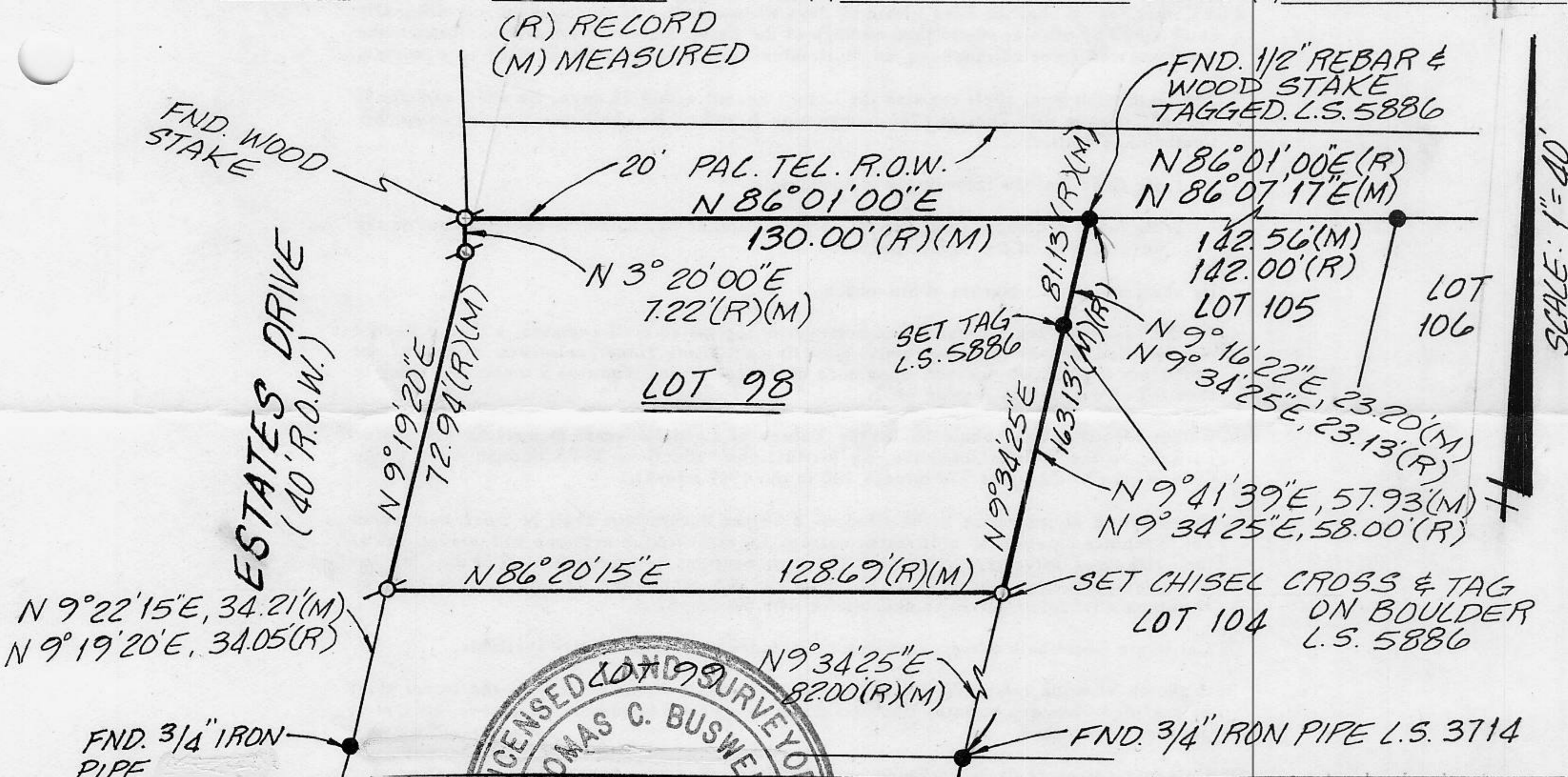
PHYSICAL DESCRIPTION OF CORNER FOUND: EVIDENCE AND METHOD USED TO IDENTIFY OR REESTABLISH

● ~ FOUND 3/4" REBAR & 2"x2" WOOD STAKE, SCRIBED FOR LOT CORNERS UNLESS OTHERWISE NOTED, TAG SET L.S. 5886

PHYSICAL DESCRIPTION OF MONUMENTS REBUILT OR PERPETUATED

⊙ ~ SET 5/8" φ REBAR w/ METAL CAP, STAMPED L.S. 5886 UNLESS OTHERWISE NOTED

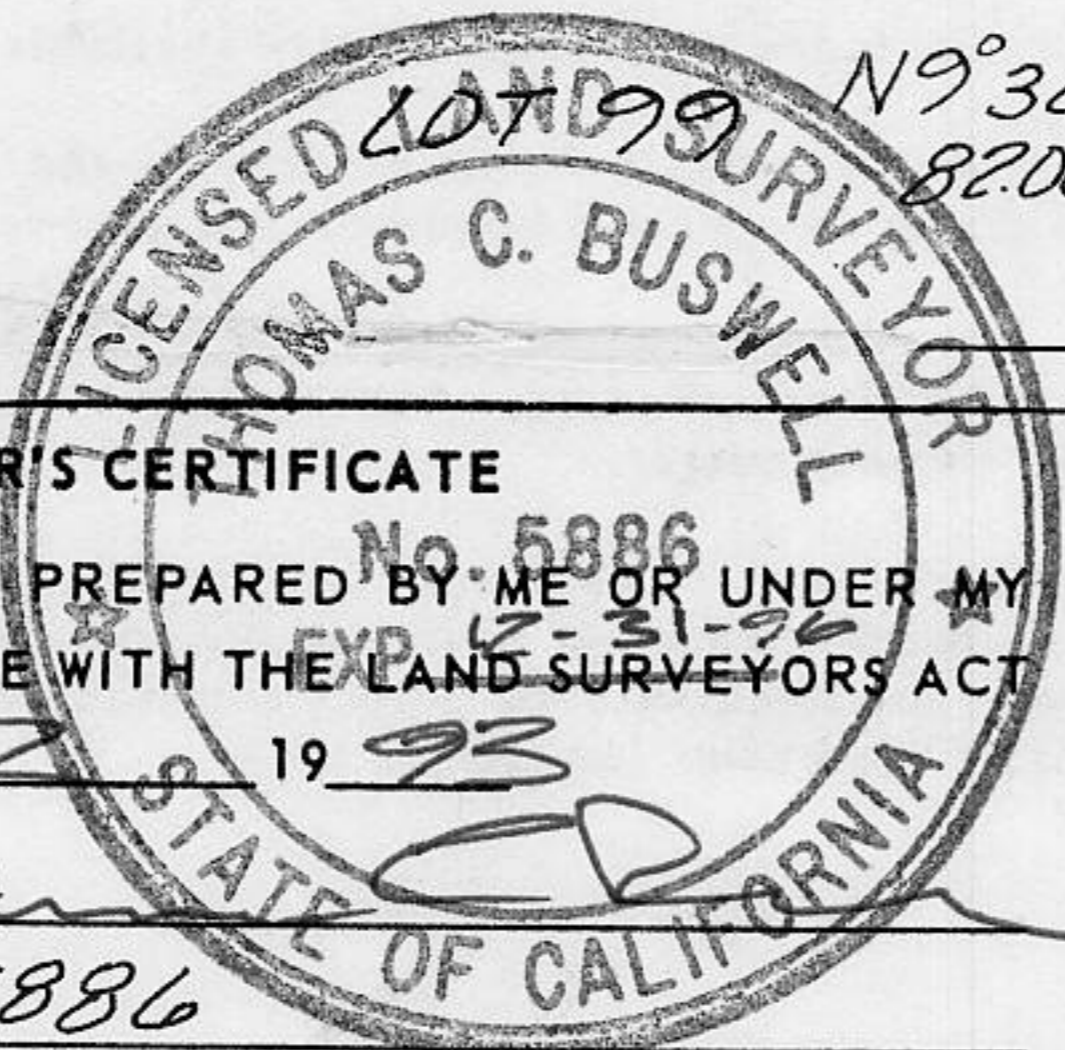
CALIFORNIA COORDINATE SYSTEM ORDER: FIRST  SECOND  THIRD  N/A  
 STATIONS USED: NGS (USC & GS)  STATE  COUNTY  OTHER  STATION \_\_\_\_\_ STATION \_\_\_\_\_  
 ZONE \_\_\_\_\_ ELEVATION \_\_\_\_\_ NORTHINGS (Y) \_\_\_\_\_ EASTINGS (X) \_\_\_\_\_



(R) RECORD  
(M) MEASURED

BOOK 3 CORNER RECORDS PAGE 167

SCALE: 1" = 40'



**SURVEYOR'S CERTIFICATE**  
 THIS CORNER RECORD WAS PREPARED BY ME OR UNDER MY DIRECTION IN CONFORMANCE WITH THE LAND SURVEYORS ACT ON JUNE 30, 1993  
 SIGNED: Thomas C. Buswell  
 L.S. or R.C.E. No.: L.S. 5886

**COUNTY SURVEYOR'S CERTIFICATE**  
 THIS CORNER RECORD WAS RECEIVED JUNE 17, 1993 AND EXAMINED AND FILED 6/25, 1993  
 BY: John R. Rogers  
 TITLE: Deputy County Surveyor  
 DOCUMENT No. \_\_\_\_\_  
 STATEMENT ON BACK OF SHEET

YES  NO