

**CORNER RECORD**

COUNTY OF PLACER T. 16N R. 17E MOUNT DIABLO MERIDIAN CALIFORNIA

CORNER TYPE: GOV'T. CORNER  MEANDER  RANCHO  CONTROL  OTHER   
 CORNER IDENTIFICATION - DATE OF VISIT SEPTEMBER 1988



LOT 15, KINGSWOOD WEST, BOOK I MAPS 73

CORNER - LEFT AS FOUND  FOUND AND TAGGED  REESTABLISHED OBLITERATED CORNER  REBUILT

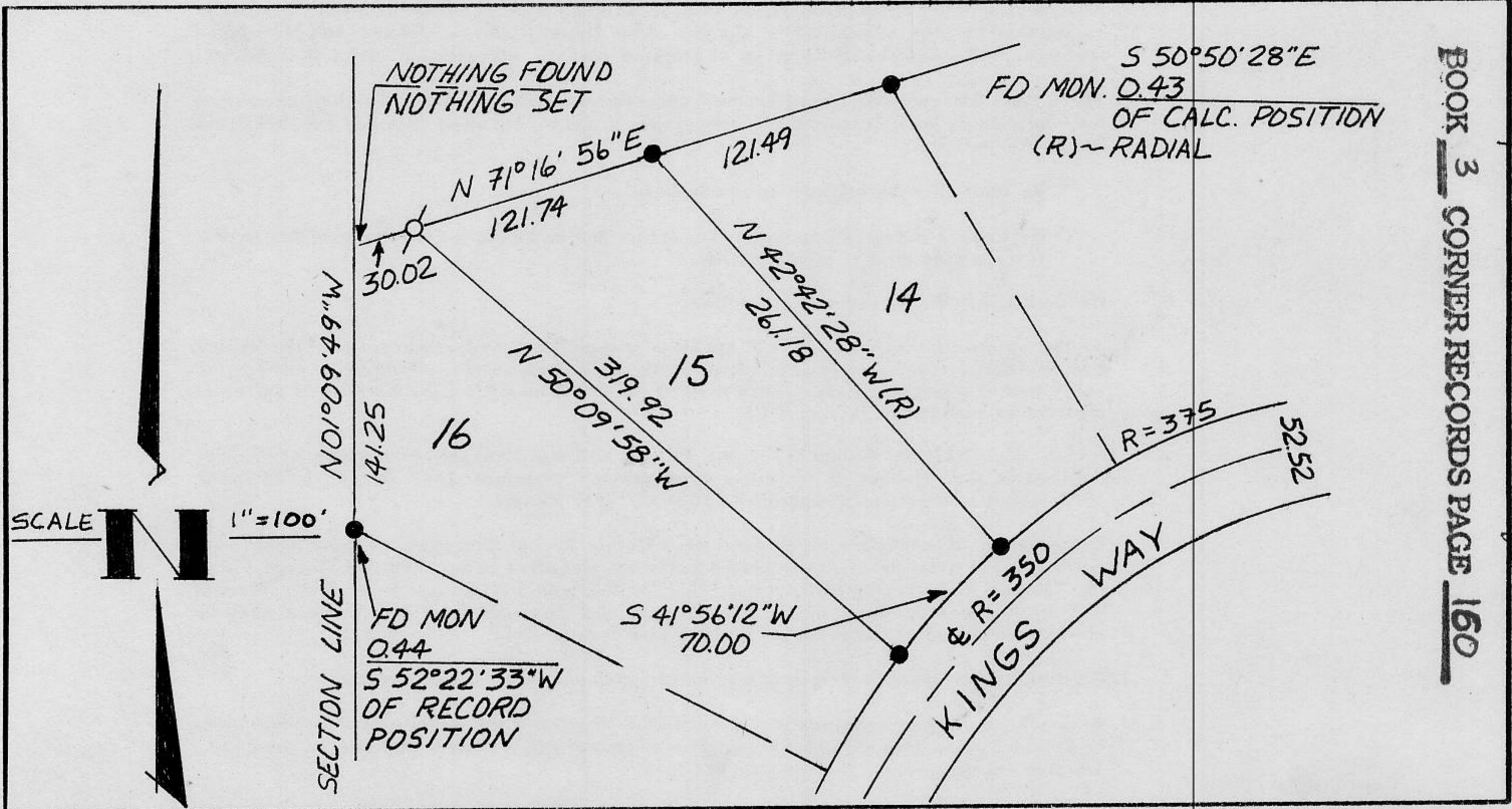
PHYSICAL DESCRIPTION OF CORNER FOUND: EVIDENCE AND METHOD USED TO IDENTIFY OR REESTABLISH \_\_\_\_\_

● ~ FD 3/4" REBAR TAGGED R.C.E. 9033 AS PER THAT CERTAIN MAP OF KINGSWOOD WEST FILED IN BOOK I OF MAPS AT PAGE 73, IN THE OFFICE OF THE PLACER COUNTY RECORDER, UNLESS OTHERWISE INDICATED.

PHYSICAL DESCRIPTION OF MONUMENTS REBUILT OR PERPETUATED \_\_\_\_\_

Q ~ SET 5/8" Q REBAR, WITH YELLOW PLASTIC CAP STAMPED L.S. 3422, UNLESS OTHERWISE INDICATED.

CALIFORNIA COORDINATE SYSTEM ORDER: FIRST  SECOND  THIRD  N/A  
 STATIONS USED: NGS (USC & GS)  STATE  COUNTY  OTHER  STATION \_\_\_\_\_ STATION \_\_\_\_\_  
 ZONE \_\_\_\_\_ ELEVATION \_\_\_\_\_ NORTHINGS (Y) \_\_\_\_\_ EASTINGS (X) \_\_\_\_\_



BOOK 3 CORNER RECORDS PAGE 160

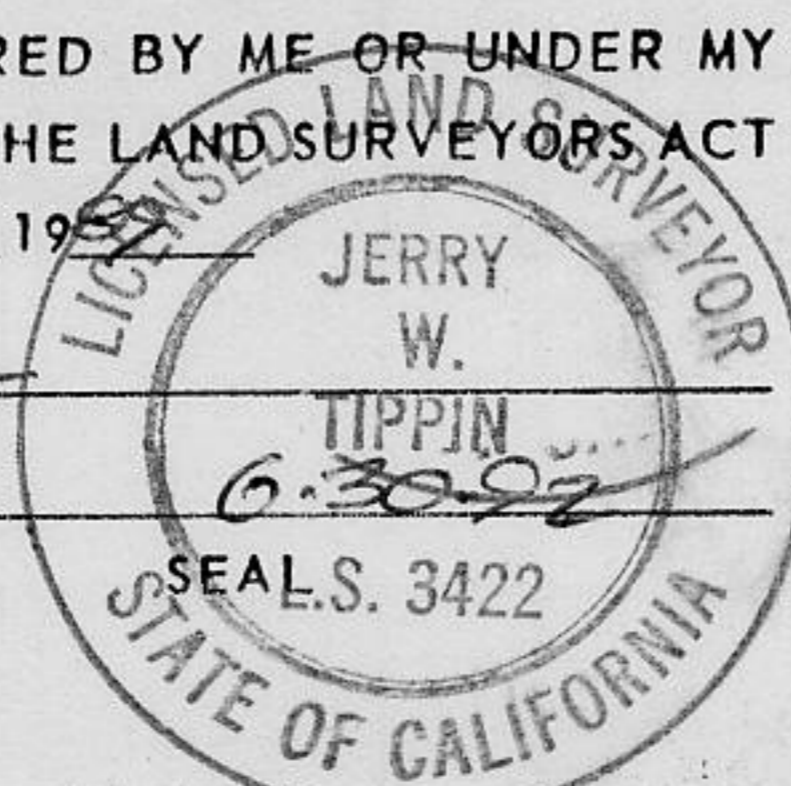
Book 1, Corner Records, Page 181

**SURVEYOR'S CERTIFICATE**

THIS CORNER RECORD WAS PREPARED BY ME OR UNDER MY DIRECTION IN CONFORMANCE WITH THE LAND SURVEYORS ACT ON Jan 13 1989

SIGNED: [Signature]

L.S. or R.C.E. No.: L.S. 3422



**COUNTY SURVEYOR'S CERTIFICATE**

THIS CORNER RECORD WAS RECEIVED 5/31 1989 AND EXAMINED AND FILED GLS 1989

BY: [Signature]  
 TITLE: DEPUTY COUNTY SURVEYOR

DOCUMENT No. \_\_\_\_\_

STATEMENT ON BACK OF SHEET

YES  NO

J.N. 293.02