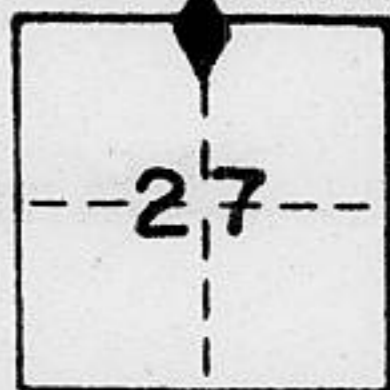


CORNER RECORD

COUNTY OF PLACER T. 14N R. 13E MD MERIDIAN CALIFORNIA

CORNER TYPE: GOVT. CORNER MEANDER RANCHO CONTROL OTHER

CORNER IDENTIFICATION — DATE OF VISIT July 10, 1989



$1/4 \frac{S22}{S27}$ GLO BRASS CAP

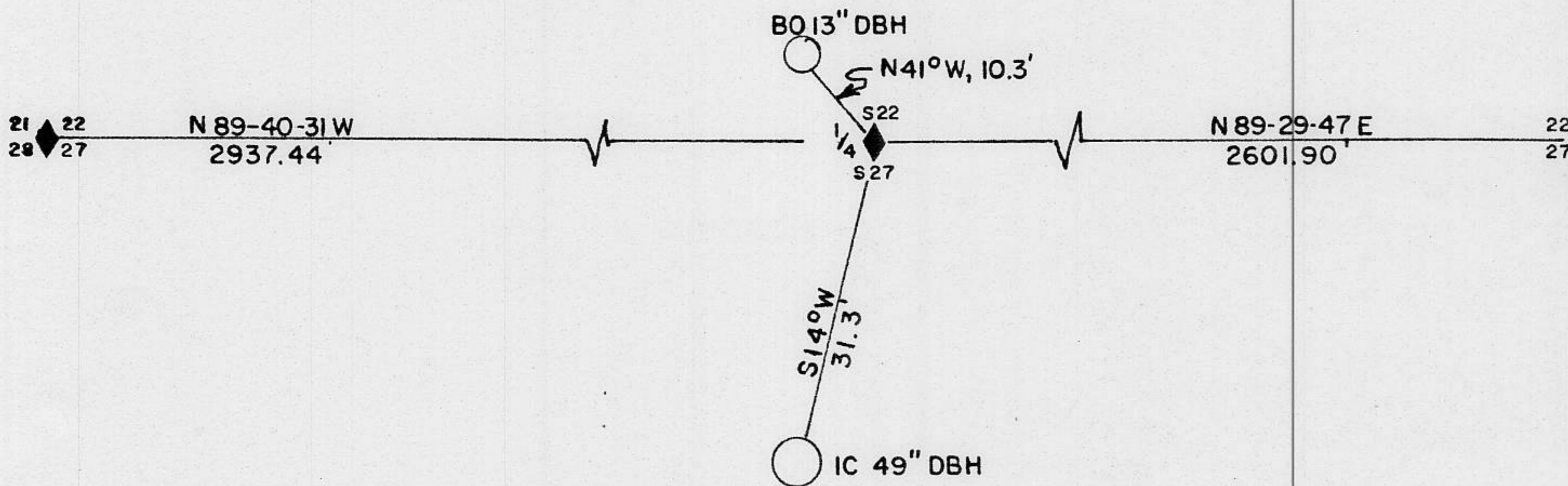
CORNER — LEFT AS FOUND FOUND AND TAGGED REESTABLISHED OBLITERATED CORNER REBUILT

PHYSICAL DESCRIPTION OF CORNER FOUND; EVIDENCE AND METHOD USED TO IDENTIFY OR REESTABLISH
 FOUND 1" IP, in rock mound 36" dia. by 12" high, WITH STD. GLO BRASS CAP STAMPED: $1/4 \frac{S22}{S27}$
 FROM WHICH BEARS:
 IC 49" DBH, S14°W, 31.3', healed scar. (GLO) CEDAR 48" S14½°W, 31.0'
 BO 13" DBH, N41°W, 10.3', healed scar. (GLO) OAK 9" N40½°W, 10.6'

PHYSICAL DESCRIPTION OF MONUMENTS REBUILT OR PERPETUATED

CALIFORNIA COORDINATE SYSTEM ORDER: FIRST SECOND THIRD
 STATIONS USED: NGS (USC & GS) STATE COUNTY OTHER STATION _____ STATION _____
 ZONE _____ ELEVATION _____ NORTHINGS (Y) _____ EASTINGS (X) _____

SKETCH: (Include reference tie or witness points, remarks and topo of area)



Book 2, Corner Records, Page 6
 Book 3, Corner Records, Page 155

SURVEYOR'S CERTIFICATE

THIS CORNER RECORD WAS PREPARED BY ME OR UNDER MY SUPERVISION IN CONFORMANCE WITH THE LAND SURVEYORS ACT
September 5, 1989

SIGNED: James F. Nicrlos
 L.S. No.: LS 3848

SEAL

COUNTY SURVEYOR'S CERTIFICATE

THE CORNER RECORD WAS RECEIVED 9/11 1989
 AND EXAMINED AND FILED 10/27 1989

BY: John Rutgeas
 TITLE: DEPUTY COUNTY SURVEYOR

DOCUMENT No. _____

STATEMENT ON BACK OF SHEET

YES NO

