

**CORNER RECORD**

COUNTY OF PLACER T. 17 N R. 16 E M. D. MERIDIAN CALIFORNIA

CORNER TYPE: GOV'T. CORNER  MEANDER  RANCHO  CONTROL  OTHER  PROP. COR.  
 CORNER IDENTIFICATION - DATE OF VISIT \_\_\_\_\_ 19\_\_\_\_



LOT 19 PONDEROSA PALISADES WEST  
BK J OF MAPS PAGE 49

CORNER - LEFT AS FOUND  FOUND AND TAGGED  REESTABLISHED OBLITERATED CORNER  REBUILT

PHYSICAL DESCRIPTION OF CORNER FOUND: EVIDENCE AND METHOD USED TO IDENTIFY OR REESTABLISH \_\_\_\_\_

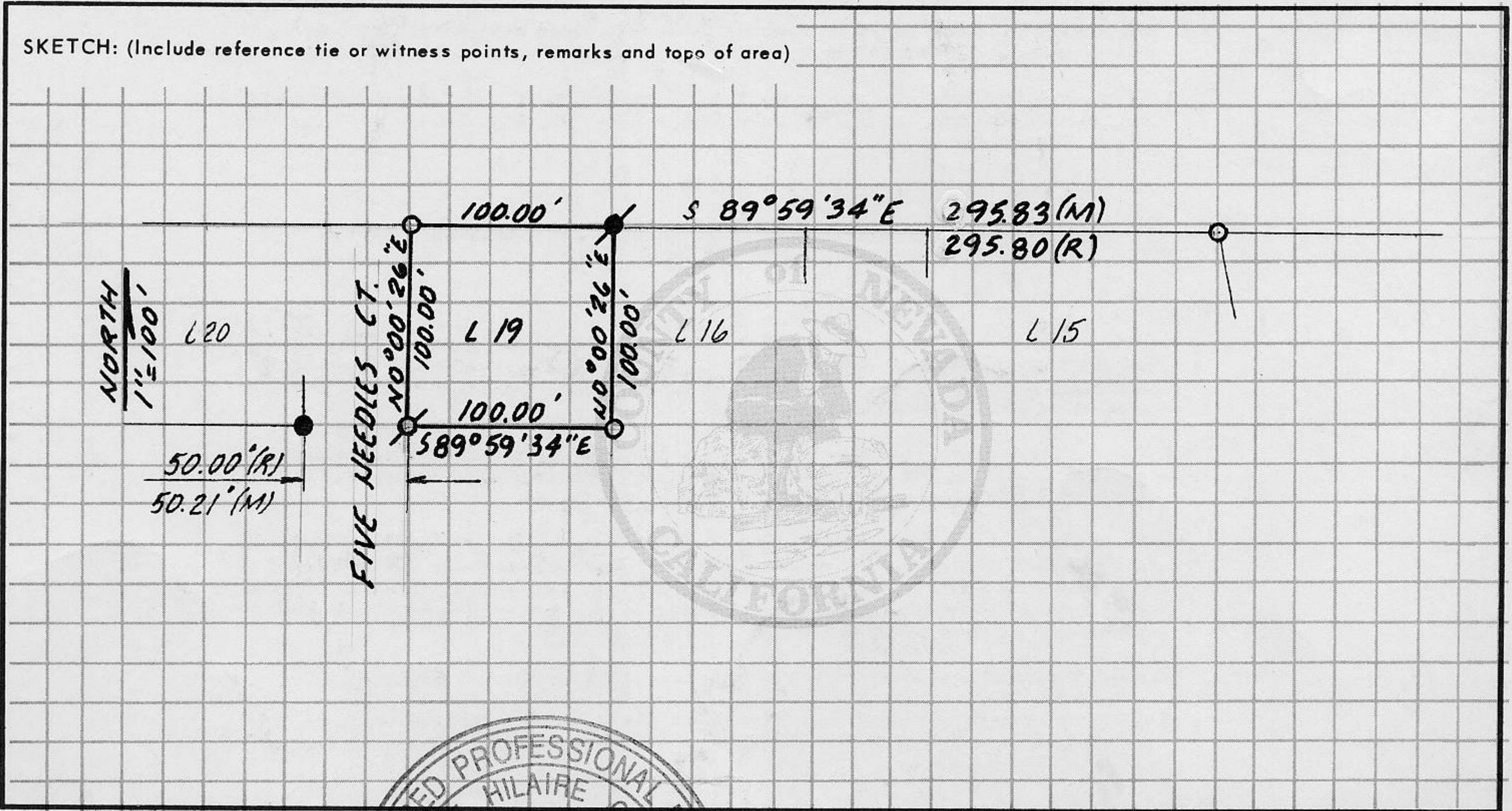
- FOUND 5/8" REBAR L.S. 3332
- FOUND 1/2" REBAR L.S. 3332

PHYSICAL DESCRIPTION OF MONUMENTS REBUILT OR PERPETUATED \_\_\_\_\_

- SET 5/8" REBAR TAG RCE 27787
- CHISELED 'X' IN ROCK

CALIFORNIA COORDINATE SYSTEM ORDER: FIRST  SECOND  THIRD   
 STATIONS USED: NGS (USC & GS)  STATE  COUNTY  OTHER  STATION \_\_\_\_\_ STATION \_\_\_\_\_  
 ZONE \_\_\_\_\_ ELEVATION \_\_\_\_\_ NORTHINGS (Y) \_\_\_\_\_ EASTINGS (X) \_\_\_\_\_

SKETCH: (Include reference tie or witness points, remarks and topo of area)

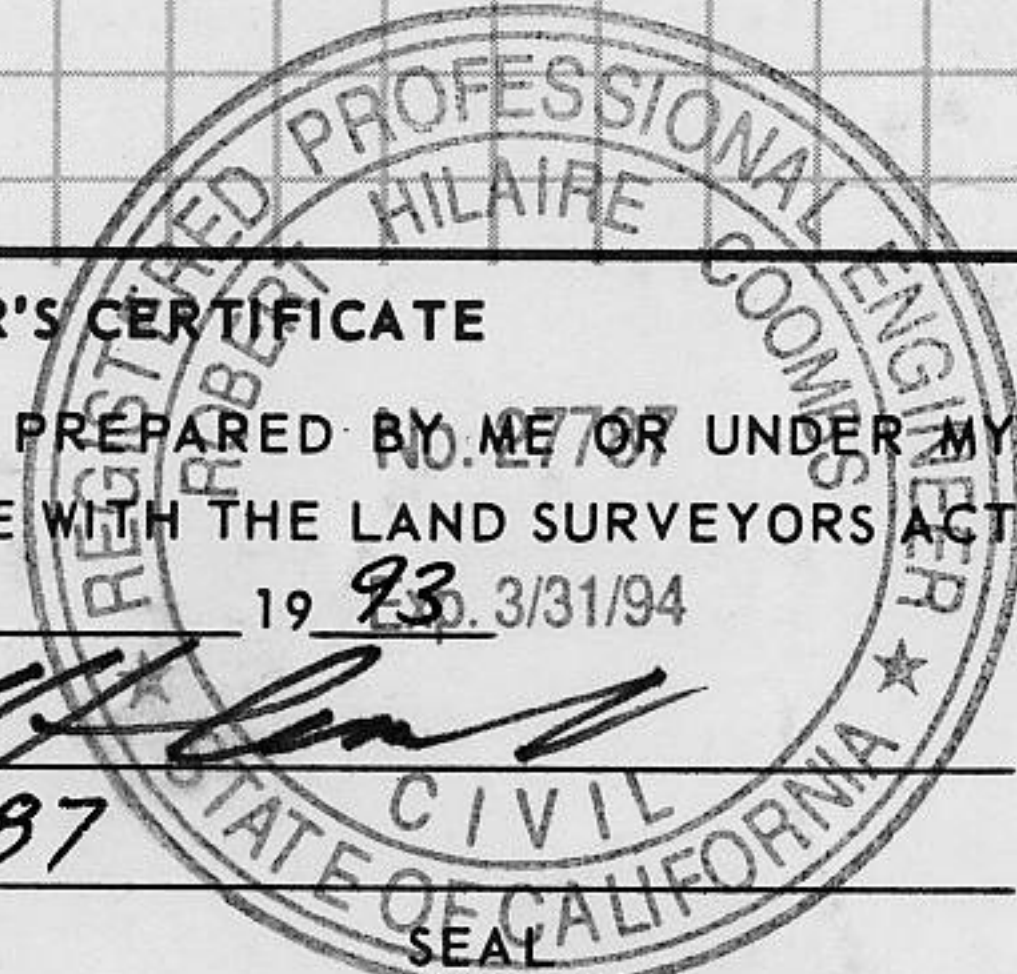


**SURVEYOR'S CERTIFICATE**

THIS CORNER RECORD WAS PREPARED BY ME OR UNDER MY DIRECTION IN CONFORMANCE WITH THE LAND SURVEYORS ACT ON 10.7 19 93 3/31/94

SIGNED: [Signature]

L.S. or R.C.E. No.: 27787



**COUNTY SURVEYOR'S CERTIFICATE**

THIS CORNER RECORD WAS RECEIVED Nov 2 19 93 AND EXAMINED AND FILED 15 1993

BY: [Signature]  
 TITLE: DEPUTY COUNTY SURVEYOR

DOCUMENT No. \_\_\_\_\_  
 STATEMENT ON BACK OF SHEET

YES  NO

BOOK 3 CORNER RECORDS PAGE 200