

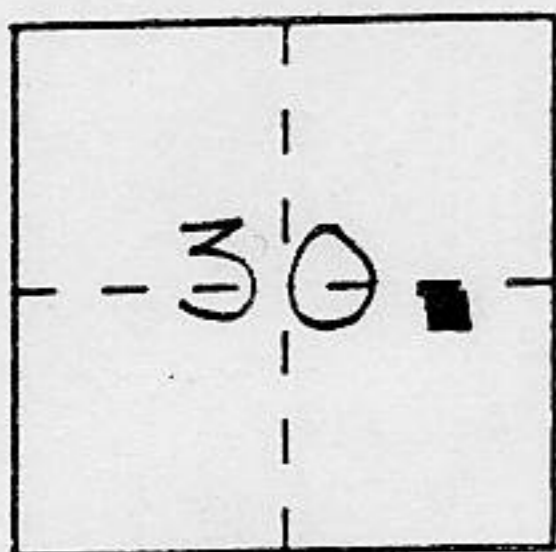
CORNER RECORD

Document Number _____

City of Community of Northstar

County of Placer, California

Brief Legal Description Lot 513, Northstar Unit 6D Book L of Maps, Page 88



T 17N
R 17E
MDM

CORNER TYPE

Government Corner Control
 Meander Property
 Rancho Other
 Date of Survey 16 July 92

COORDINATES (Optional)

N. _____
 E. _____
 Zone _____ Datum _____
 Elev. _____

Corner — Left as found Found and tagged Established Reestablished Rebuilt

Identification and type of corner found: Evidence used to identify or procedure used to establish or reestablish the corner:

see sketch on page 2

A description of the physical condition of the monument as found and as set or reset: _____

SURVEYOR'S STATEMENT

This Corner Record was prepared by me or under my direction in conformance with the Land Surveyors' Act on July 1992.

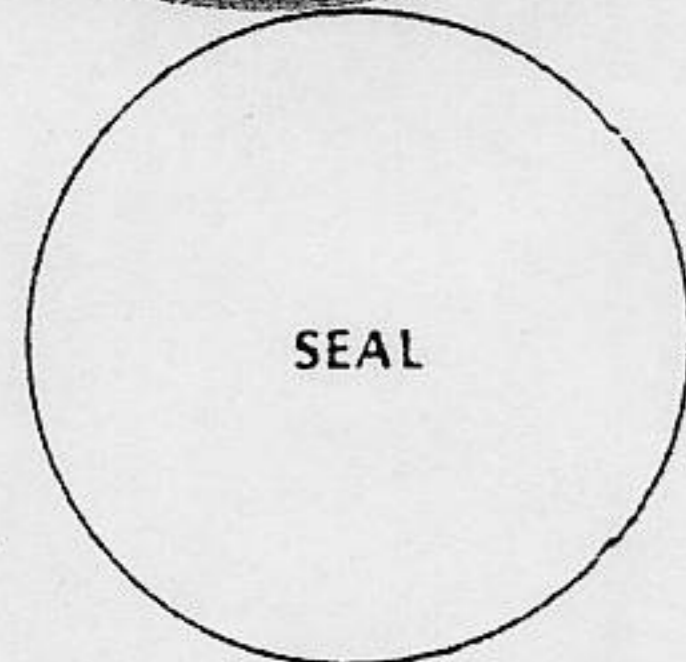
Signed [Signature] L.S. or R.C.E. Number LS 6230



COUNTY SURVEYOR'S STATEMENT

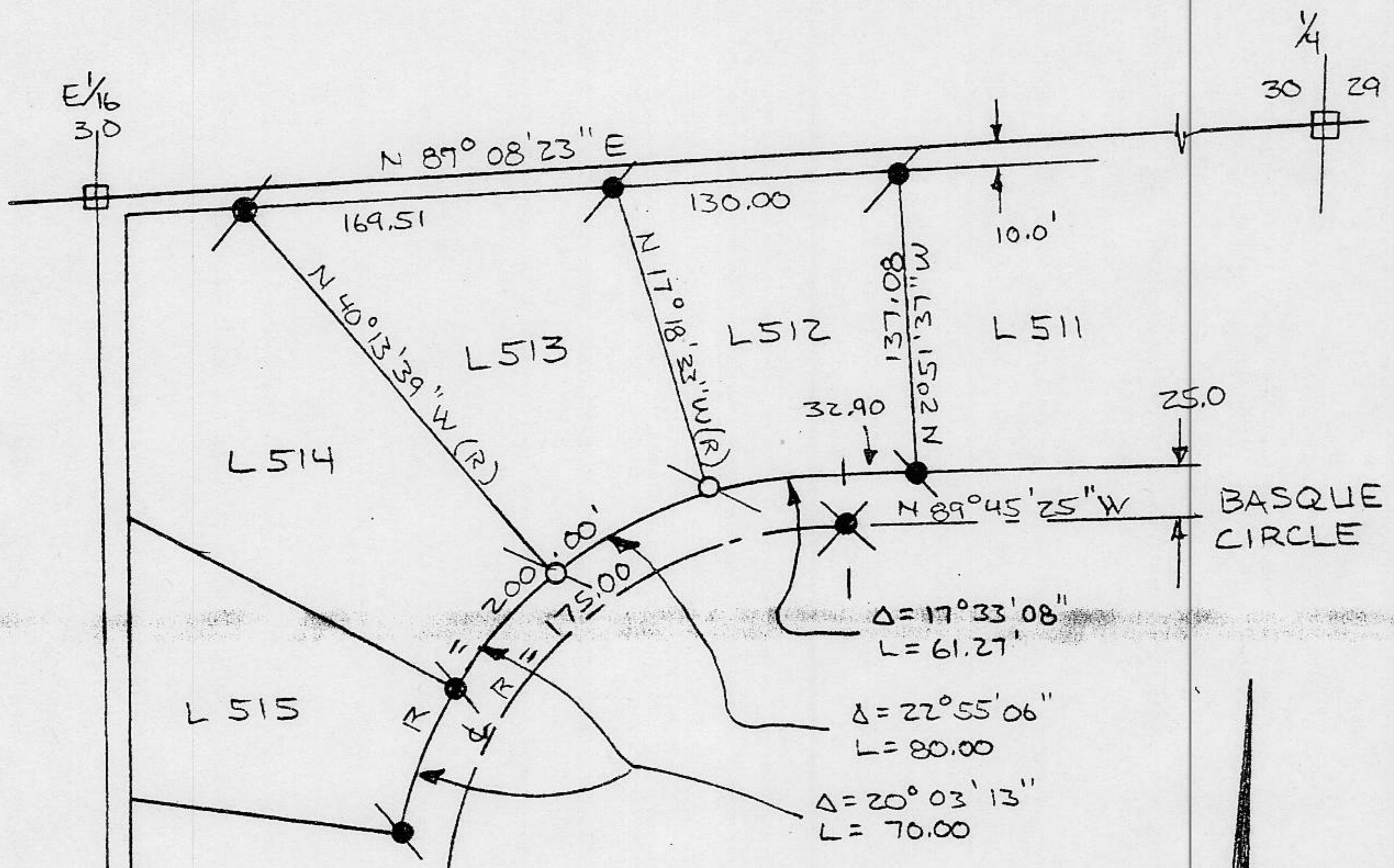
This Corner Record was received 2/22 1993 and examined and filed 2/22 1993.

Signed [Signature] Title DEPUTY COUNTY SURVEYOR



County Surveyor's Comment _____

BOOK 3 CORNER RECORDS PAGE 137



- fnd 1/2" ϕ rebar "RCE 17795"
- fnd 3/4" ϕ rebar @ ϕ no tag
- fnd 3/4" ϕ rebar "RCE 17795"
- set 5/8" ϕ rebar "LS6230"

PLAT OF SURVEY

of Lot 514 Nortstar Unit 6-D
 Book L of Maps, at Page 88 O.R.P.C.,
 in Section 30, Township 17 North, Range 17 East M.D.M.
 County of Placer California
 July 1992
 Not to Scale

3/6 630.04