

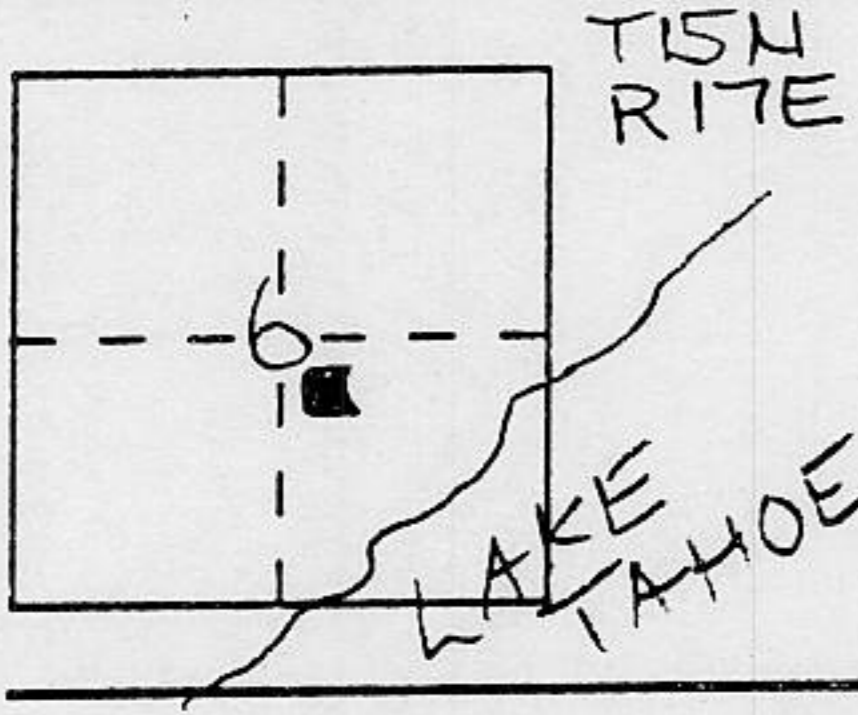
CORNER RECORD

Document Number _____

City of Tahoe City

County of Placer, California

Brief Legal Description _____



CORNER TYPE

Government Corner Control
 Meander Property
 Rancho Other
 Date of Survey Sept 1992

COORDINATES (Optional)

N. _____
 E. _____
 Zone _____ Datum _____
 Elev. _____

Corner — Left as found Found and tagged Established Reestablished Rebuilt

Identification and type of corner found: Evidence used to identify or procedure used to establish or reestablish the corner:

see sketch on back

A description of the physical condition of the monument as found and as set or reset:

see sketch on back

SURVEYOR'S STATEMENT

This Corner Record was prepared by me or under my direction in conformance with the Land Surveyors' Act on 01 Oct 1992.

Signed [Signature] L.S. or R.C.E. Number 6230

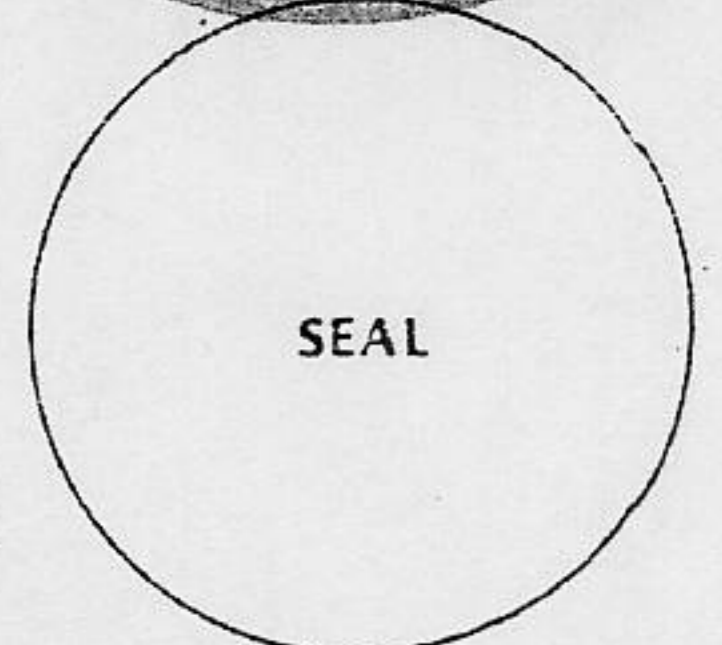
COUNTY SURVEYOR'S STATEMENT

This Corner Record was received 2/22 1993 and examined

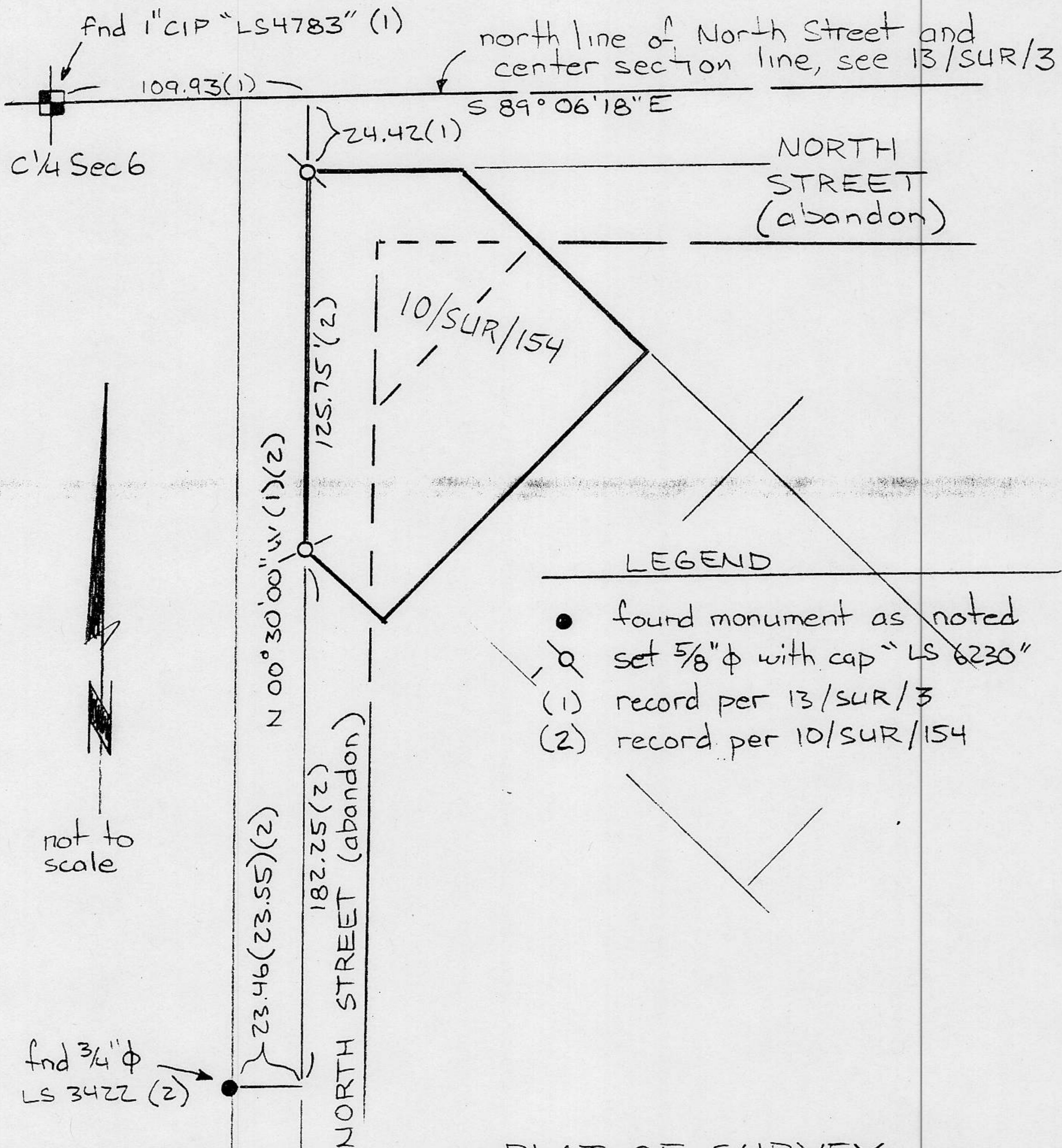
and filed 2/22 1993

Signed [Signature] Title DEPUTY COUNTY SURVEYOR

County Surveyor's Comment _____



BOOK 3 CORNER RECORDS PAGE 136



- LEGEND
- found monument as noted
 - set 5/8" φ with cap "LS 6230"
 - (1) record per 13/SUR/3
 - (2) record per 10/SUR/154

PLAT OF SURVEY
of a portion of Bittencourt Tract Resub.
Book "D" of Maps, Page 19
Section 6, Township 15 North, Range 17 East
M.D.B. & M.

County of Placer California
Sept. 1992

J/N 22.36