

(For County Use Only)

CORNER RECORD

COUNTY OF PLACER T. 17N R. 16E MDM MERIDIAN CALIFORNIA

CORNER TYPE: GOV'T. CORNER  MEANDER  RANCHO  CONTROL  OTHER

CORNER IDENTIFICATION — DATE OF VISIT JUNE 25 1992



LOT 48 MARTIS WOODS ESTATES AS FILLED IN BOOK N OF MAPS, PAGE 27 OF PLACER COUNTY OFFICIAL RECORDS.

CORNER — LEFT AS FOUND  FOUND AND TAGGED  REESTABLISHED OBLITERATED CORNER  REBUILT

PHYSICAL DESCRIPTION OF CORNER FOUND; EVIDENCE AND METHOD USED TO IDENTIFY OR REESTABLISH

- - FOUND PIN & CAP RCE 20257 ● FND P&C LS 3332 PER BOOK J / PAGE 89
- ▲ - FOUND 3/4" REBAR LS. 4165 PER N / MAPS 27
- - FOUND CHISELED "+" IN CONCRETE H2O BOX

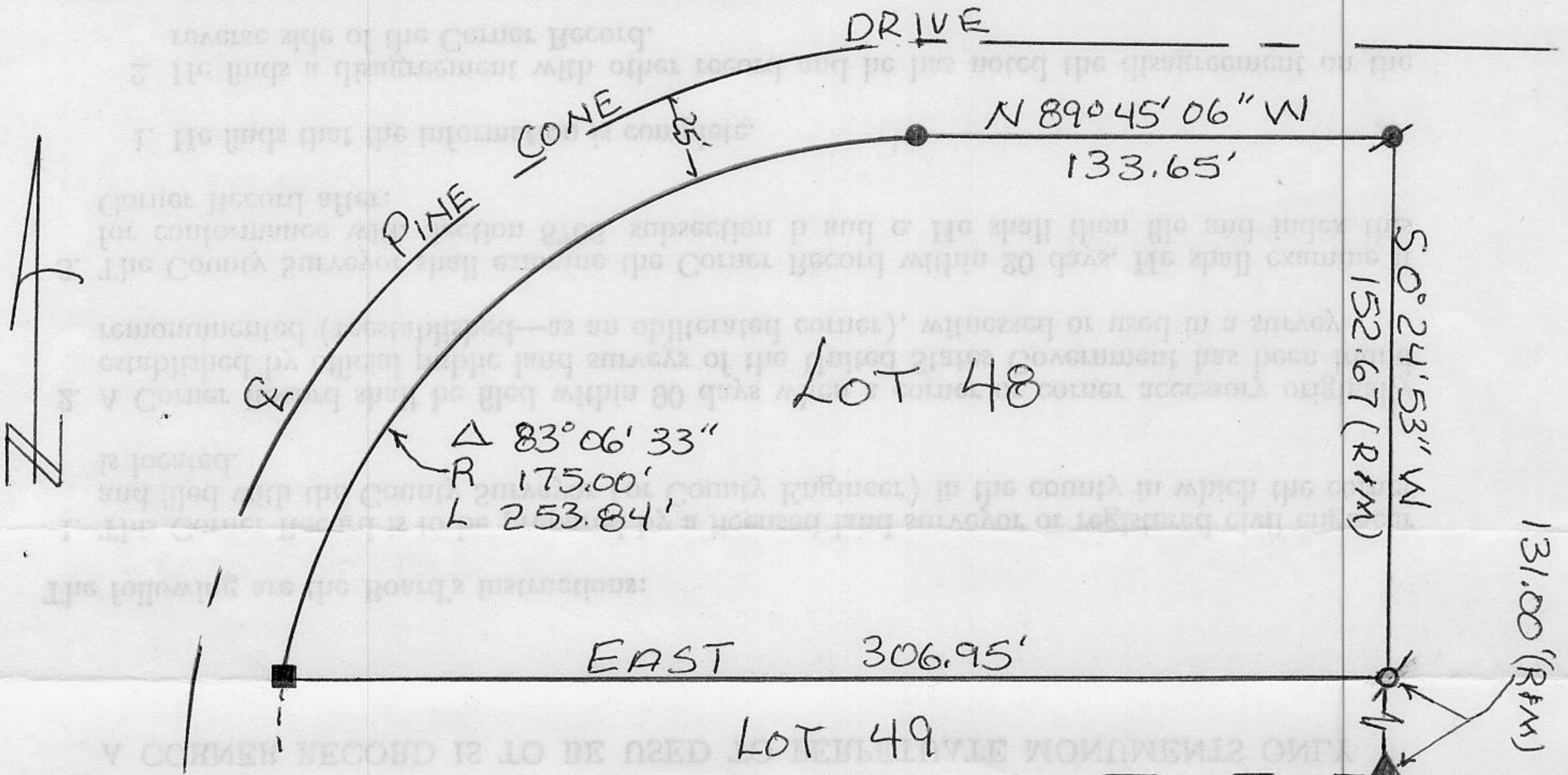
PHYSICAL DESCRIPTION OF MONUMENTS REBUILT OR PERPETUATED

Q - SET 5/8" REBAR W/CAP MARKED RCE 32239

CALIFORNIA COORDINATE SYSTEM ORDER: FIRST  SECOND  THIRD   
STATIONS USED: NGS (USC & GS)  STATE  COUNTY  OTHER  STATION \_\_\_\_\_ STATION \_\_\_\_\_  
ZONE \_\_\_\_\_ ELEVATION \_\_\_\_\_ NORTHINGS (Y) \_\_\_\_\_ EASTINGS (X) \_\_\_\_\_

(Fold)

SKETCH: (Include reference tie or witness points, remarks and topo of area)



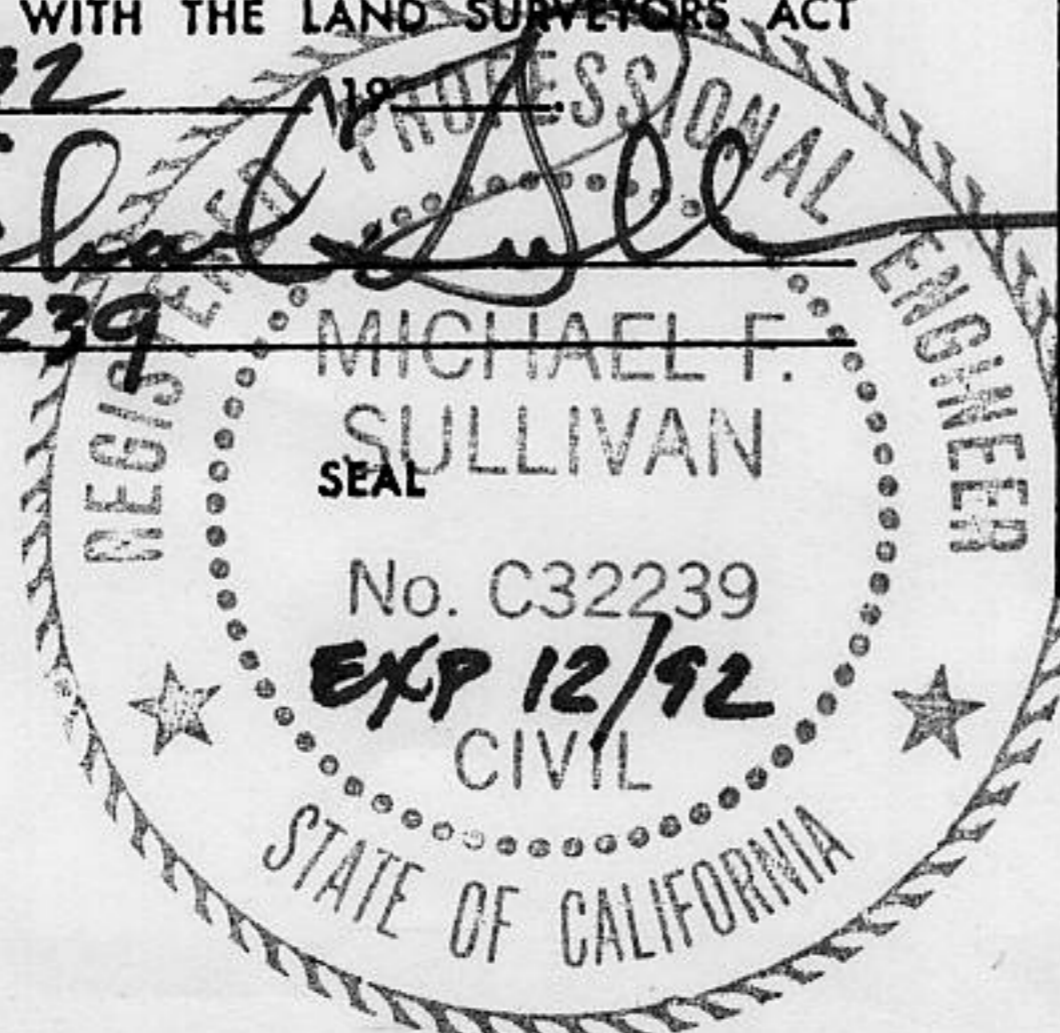
Book 3, CORNER RECORDS, PAGE 101

SURVEYOR'S CERTIFICATE

THIS CORNER RECORD WAS PREPARED BY ME OR UNDER MY DIRECTION IN CONFORMANCE WITH THE LAND SURVEYORS ACT ON 9/15/92

SIGNED: Michael F. Sullivan

L.S. or R.C.E. No.: C32239



COUNTY SURVEYOR'S CERTIFICATE

THE CORNER RECORD WAS RECEIVED 9/21 1992 AND EXAMINED AND FILED 12/30 1992

BY: David D. McDaniel  
TITLE: DEPUTY COUNTY SURVEYOR

DOCUMENT No. \_\_\_\_\_

STATEMENT ON BACK OF SHEET

YES  NO