

CORNER RECORD

COUNTY OF PLACER T. 16 N. R. 17 E. M.D. MERIDIAN CALIFORNIA

CORNER TYPE: GOV'T. CORNER MEANDER RANCHO CONTROL OTHER

CORNER IDENTIFICATION — DATE OF VISIT 1991



LOT 46, KINGSWOOD ESTATES, UNIT NO. 5
BOOK I, MAPS. PAGE 57

CORNER — LEFT AS FOUND FOUND AND TAGGED REESTABLISHED OBLITERATED CORNER REBUILT

PHYSICAL DESCRIPTION OF CORNER FOUND, EVIDENCE AND METHOD USED TO IDENTIFY OR REESTABLISH

- ① INDICATES FOUND 1/2 INCH REBAR NO TAG.
- ② INDICATES FOUND 3/4 INCH REBAR NO TAG.

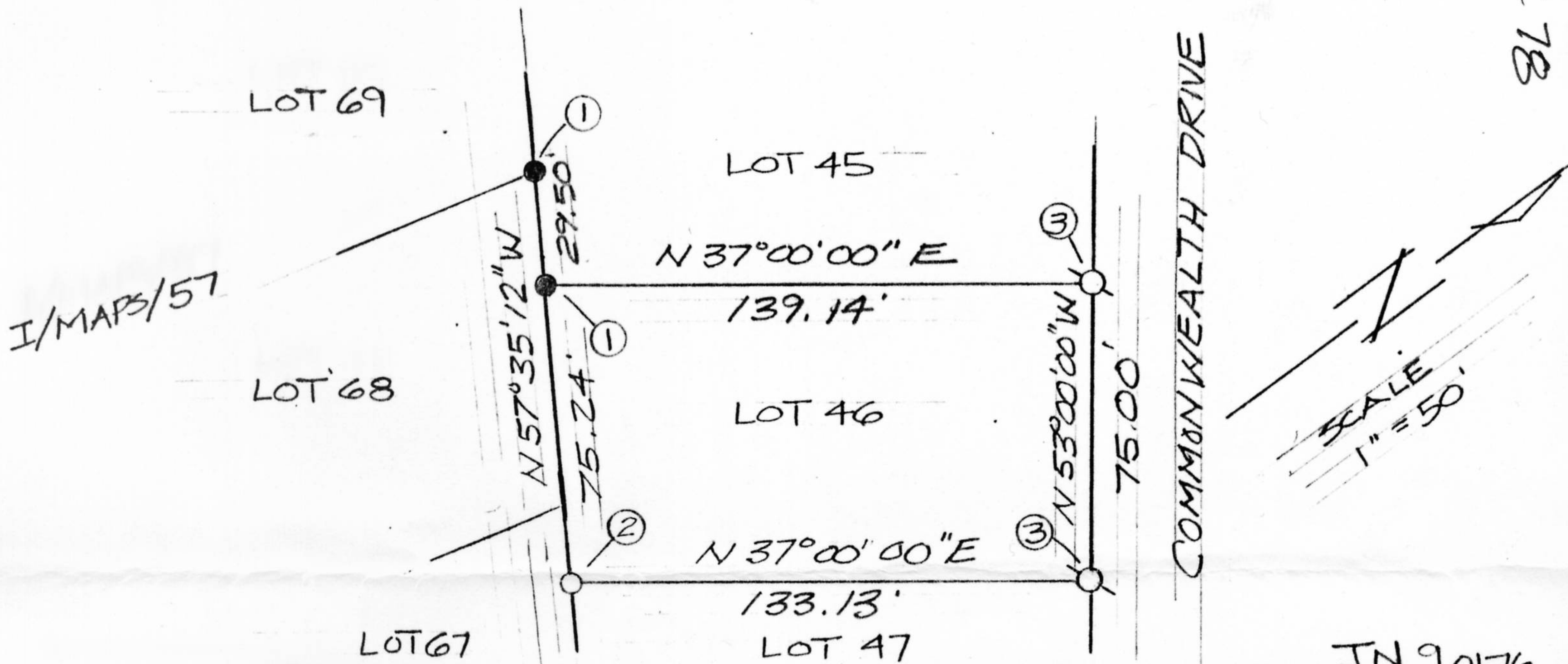
PHYSICAL DESCRIPTION OF MONUMENTS REBUILT OR PERPETUATED

- ③ INDICATES SET 5/8 INCH REBAR W/ CAP (PLASTIC) "RCE 20257".

CALIFORNIA COORDINATE SYSTEM ORDER: FIRST SECOND THIRD
 STATIONS USED: NGS (USC & GS) STATE COUNTY OTHER STATION _____ STATION _____
 ZONE _____ ELEVATION _____ NORTHINGS (Y) _____ EASTINGS (X) _____

(Fold)

SKETCH: (Include reference tie or witness points, remarks and topo of area)



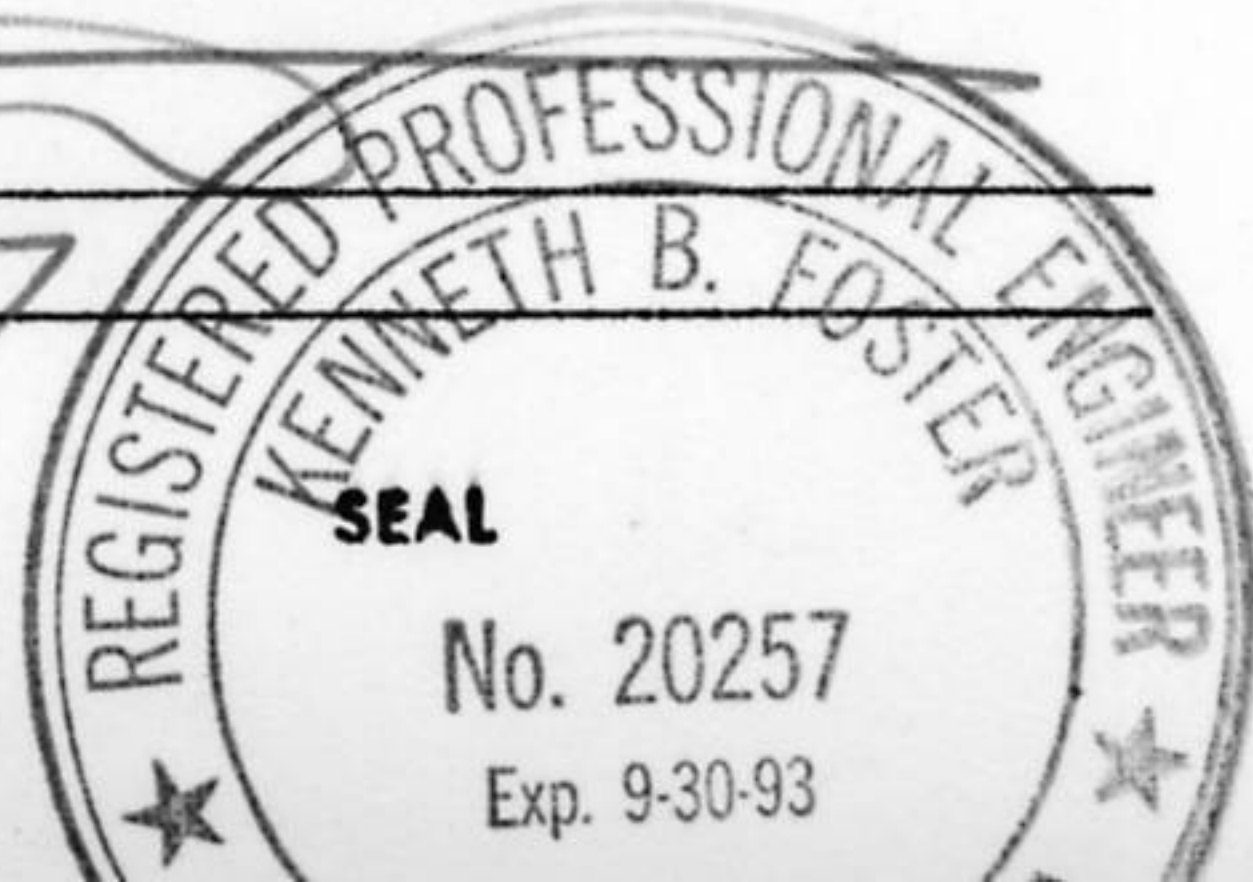
Book 3, CORNER RECORDS, PAGE 78

SURVEYOR'S CERTIFICATE

THIS CORNER RECORD WAS PREPARED BY ME OR UNDER MY DIRECTION IN CONFORMANCE WITH THE LAND SURVEYORS ACT ON 3.23 1992

SIGNED: _____

L.S. or R.C.E. No.: 20257



COUNTY SURVEYOR'S CERTIFICATE

THE CORNER RECORD WAS RECEIVED 3/26 1992 AND EXAMINED AND FILED 9/8 1992

BY: David L. McDaniel
TITLE: DEPUTY COUNTY SURVEYOR

DOCUMENT No. _____

STATEMENT ON BACK OF SHEET

YES NO