

CORNER RECORD

COUNTY OF PLACER T. 15N. R. 16E. M.D.M. MERIDIAN CALIFORNIA

CORNER TYPE: GOV'T. CORNER MEANDER RANCHO CONTROL OTHER

CORNER IDENTIFICATION - DATE OF VISIT 4-23 1988



LOT 249 ALPINE MEADOWS ESTATES SUB. UNIT NO. 8
BK "I" MAPS PG 53

CORNER - LEFT AS FOUND FOUND AND TAGGED REESTABLISHED OBLITERATED CORNER REBUILT

PHYSICAL DESCRIPTION OF CORNER FOUND: EVIDENCE AND METHOD USED TO IDENTIFY OR REESTABLISH _____

- = FOUND RAILROAD SPIKE SET FLUSH W/ A.C.
- = FOUND 5/8" REBAR W/ PLASTIC CAP STAMPED R.C.E. 32239 SET FLUSH W/ GROUND
- = FOUND 1/2" REBAR, NO REFERENCE, SET PLASTIC CAP STAMPED L.S. 5549

PHYSICAL DESCRIPTION OF MONUMENTS REBUILT OR PERPETUATED _____

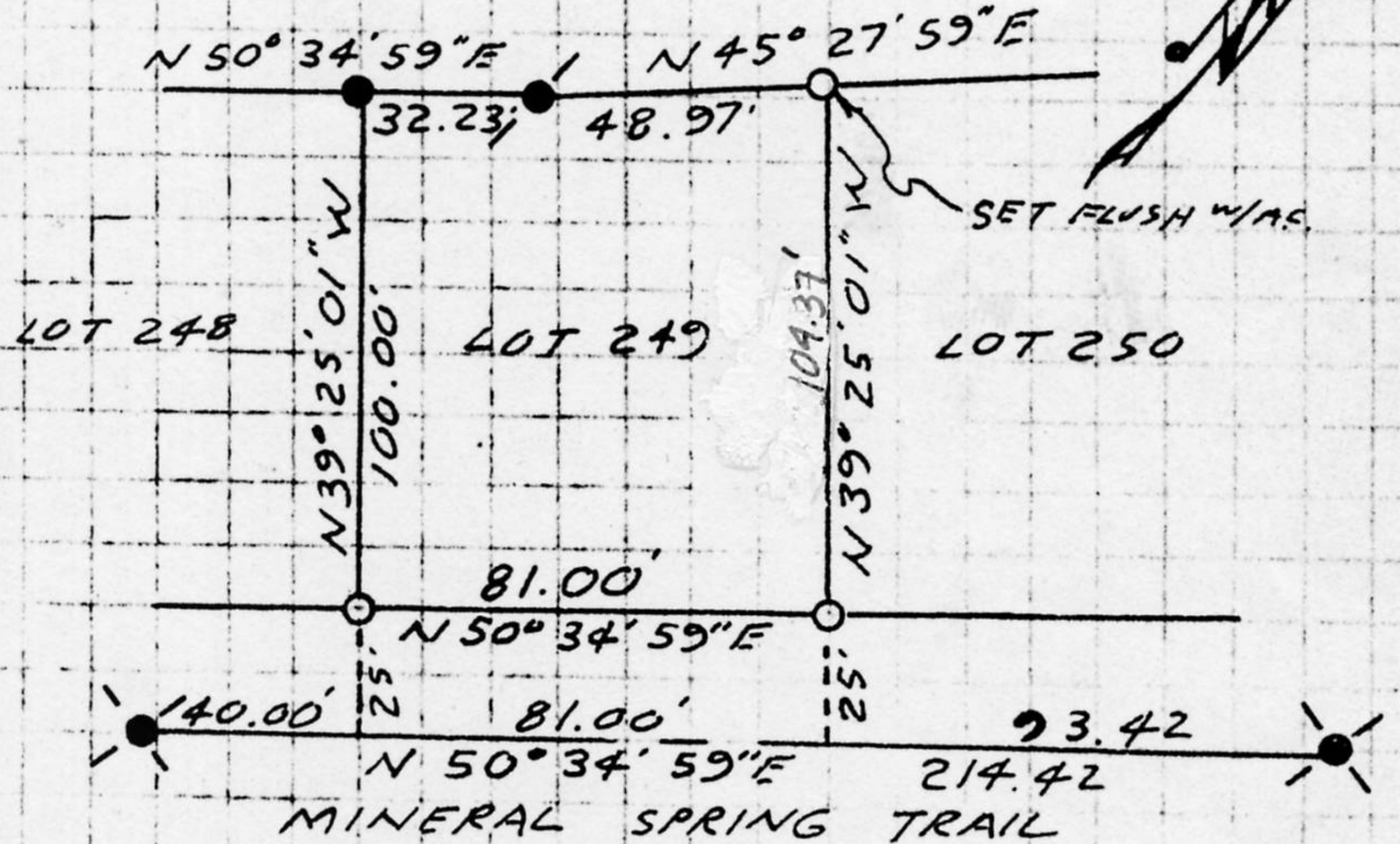
○ = SET 3/4" IRON PIPE W/ PLASTIC PLUG L.S. 5549 FLUSH W/ GROUND

CALIFORNIA COORDINATE SYSTEM ORDER: FIRST SECOND THIRD

STATIONS USED: NGS (USC & GS) STATE COUNTY OTHER STATION _____ STATION _____

ZONE _____ ELEVATION _____ NORTHINGS (Y) _____ EASTINGS (X) _____

SKETCH: (Include reference tie or witness points, remarks and topo of area)



SURVEYOR'S CERTIFICATE

THIS CORNER RECORD WAS PREPARED BY ME OR UNDER MY DIRECTION IN CONFORMANCE WITH THE LAND SURVEYORS ACT ON 4-23 1988

SIGNED: Charles R. Sage Jr.

L.S. or R.C.E. No.: L.S. 5549 EXP. 6-3-89

SEAL

COUNTY SURVEYOR'S CERTIFICATE

THIS CORNER RECORD WAS RECEIVED 6/15 1992 AND EXAMINED AND FILED 7/22 1992

BY: David L. McDaniel
TITLE: DEPUTY COUNTY SURVEYOR

DOCUMENT No. _____
STATEMENT ON BACK OF SHEET

YES NO

JN: 8833

BOOK 3, CORNER RECORDS, PAGE 73