

CORNER RECORD

COUNTY OF PLACER T. 16 N R. 17 E M.D. MERIDIAN CALIFORNIA

CORNER TYPE: GOV'T. CORNER MEANDER RANCHO CONTROL OTHER

CORNER IDENTIFICATION - DATE OF VISIT 4-29 19 92



**SE. & S.W. COR.'s LOT 18 AND S.W. COR. LOT 13
TAHOE ESTATES UNIT NO. 1
BK. "D" OF MAPS PG. 89**

CORNER - LEFT AS FOUND FOUND AND TAGGED REESTABLISHED OBLITERATED CORNER REBUILT

PHYSICAL DESCRIPTION OF CORNER FOUND: EVIDENCE AND METHOD USED TO IDENTIFY OR REESTABLISH _____

● = FOUND 5/8" REBAR W/PLASTIC CAP L.S. 3422

● = FOUND 3/4" GALV. IRON PIPE, NO TAG

□ = FOUND ORIGINAL 2X2 HUB W/LOT NO.'S SCRIBED AND PAINTED WHITE
AGAINST MONUMENT INDICATED AND IN POSITION SHOWN BELOW

PHYSICAL DESCRIPTION OF MONUMENTS REBUILT OR PERPETUATED _____

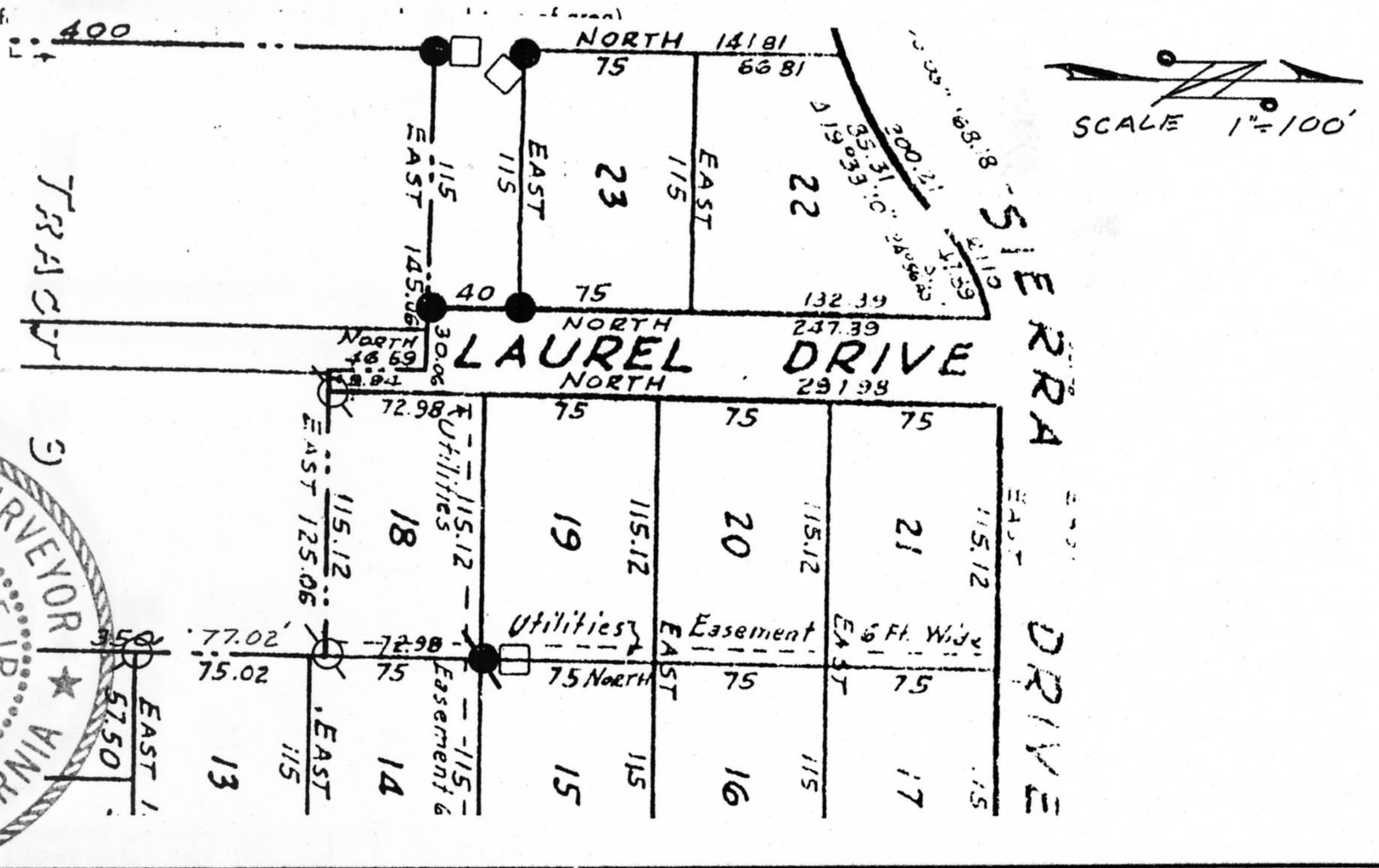
○ = SET 3/4" IRON PIPE W/PLASTIC PLUG STAMPED L.S. 5549

CALIFORNIA COORDINATE SYSTEM ORDER: FIRST SECOND THIRD

STATIONS USED: NGS (USC & GS) STATE COUNTY OTHER STATION _____ STATION _____

ZONE _____ ELEVATION _____ NORTHINGS (Y) _____ EASTINGS (X) _____

SKETCH: (Include ref. _____)



SURVEYOR'S CERTIFICATE #9261

THIS CORNER RECORD WAS PREPARED BY ME OR UNDER MY DIRECTION IN CONFORMANCE WITH THE LAND SURVEYORS ACT ON 4-30 19 92

SIGNED: Charles R. Sage, Jr.

L.S. or R.C.E. No.: L.S. 5549 EXP. 6-30-93

SEAL

COUNTY SURVEYOR'S CERTIFICATE

THIS CORNER RECORD WAS RECEIVED 6/15 19 92
AND EXAMINED AND FILED 7/22 19 92

BY: Brian J. McDaniel

TITLE: DEPUTY COUNTY SURVEYOR

DOCUMENT No. _____

STATEMENT ON BACK OF SHEET

YES NO

Book 3, CORNER RECORDS, PAGE 71