

### CORNER RECORD

COUNTY OF PLACER T. 17 N. R. 14 E. MOUNT DIABLO MERIDIAN CALIFORNIA

CORNER TYPE: GOVT. CORNER  MEANDER  RANCHO  CONTROL  OTHER   
CORNER IDENTIFICATION — DATE OF VISIT MAY 16 1992



CORNER — LEFT AS FOUND  FOUND AND TAGGED  REESTABLISHED OBLITERATED CORNER  REBUILT

PHYSICAL DESCRIPTION OF CORNER FOUND; EVIDENCE AND METHOD USED TO IDENTIFY OR REESTABLISH

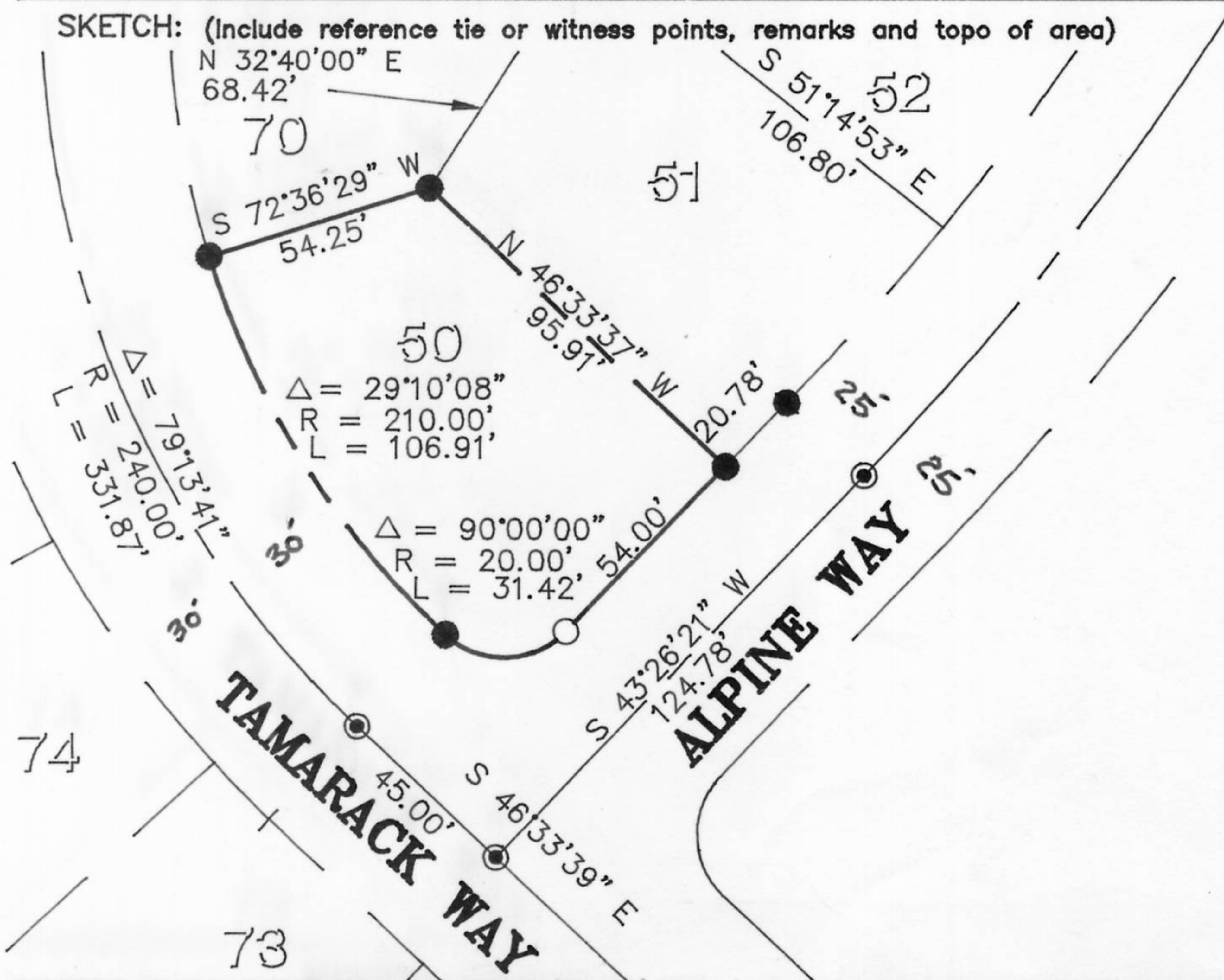
- Found 5/8" rebar no tag per Bk.J, Maps, Pg.67
- Found RR Spike in centerline of road per Bk.J, Maps, Pg.67

PHYSICAL DESCRIPTION OF MONUMENTS REBUILT OR PERPETUATED

- Set 3/4" rebar w/ tag "LS 5583"

CALIFORNIA COORDINATE SYSTEM ORDER: FIRST  SECOND  THIRD   
 STATIONS USED: NGS (USC & GS)  STATE  COUNTY  OTHER  STATION NA STATION NA  
 ZONE NA ELEVATION NA NORTHINGS (Y) NA EASTINGS (X) NA

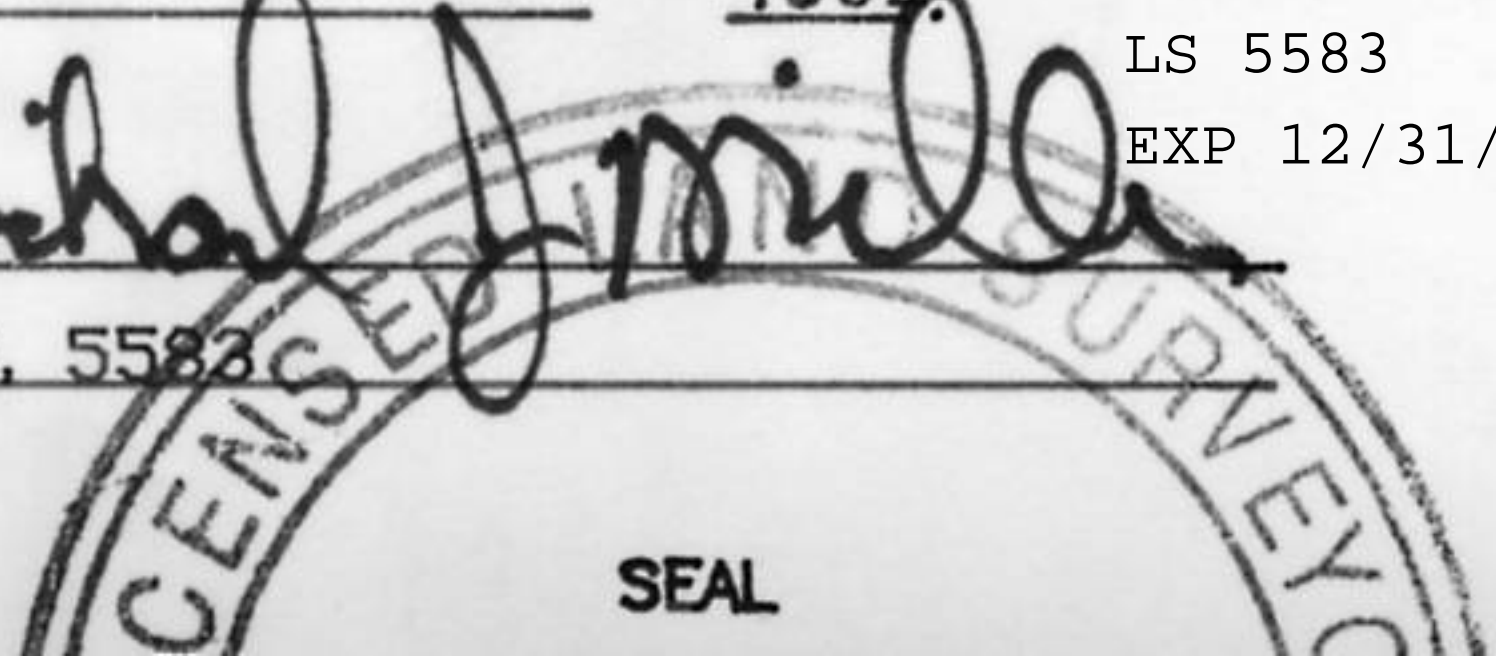
(Fold)



BEING LOT 50 OF SERENE LAKES UNIT NOS. 5 & 6 SUBD., RECORDED IN BK.J MAPS, PG.67, OFFICIAL RECORDS, PLACER COUNTY



**SURVEYOR'S CERTIFICATE**  
 THIS CORNER RECORD WAS PREPARED BY ME OR UNDER MY DIRECTION IN CONFORMANCE WITH THE LAND SURVEYORS ACT ON MAY 18, 1992 MICHAEL J. MILLER L.S. 5583 EXP 12/31/93  
 SIGNED: *Michael J. Miller*  
 L.S. or R.C.E. No.: L.S. 5583



**COUNTY SURVEYOR'S CERTIFICATE**  
 THE CORNER RECORD WAS RECEIVED 6/5 19 92 AND EXAMINED AND FILED 6/9 19 92  
 BY: *Bruce P. McDaniel*  
 TITLE: DEPUTY COUNTY SURVEYOR  
 DOCUMENT No. \_\_\_\_\_  
 STATEMENT ON BACK OF SHEET

YES  NO