

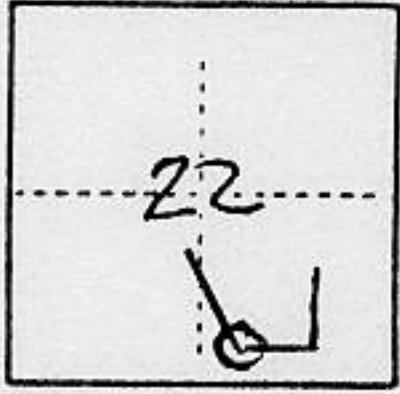
(For County Use Only)

CORNER RECORD

COUNTY OF PLACER T. 15N R. 11E MDM MERIDIAN CALIFORNIA

CORNER TYPE: GOV'T. CORNER MEANDER RANCHO CONTROL OTHER

CORNER IDENTIFICATION — DATE OF VISIT 10/2/92 1992
COR 12 of MS 1397 Mountain Gate P.M



CORNER — LEFT AS FOUND FOUND AND TAGGED REESTABLISHED OBLITERATED CORNER REBUILT

PHYSICAL DESCRIPTION OF CORNER FOUND; EVIDENCE AND METHOD USED TO IDENTIFY OR REESTABLISH

Found R.R. Iron with 2 1/2" Base marked MGPM SW cor - HT PM on side and LS 3062 on top per ROS 5/102

A STUMPHOLE OF A LARGE FIR BEARS N23°E 88' (ORIG. BT)

PHYSICAL DESCRIPTION OF MONUMENTS REBUILT, OR PERPETUATED

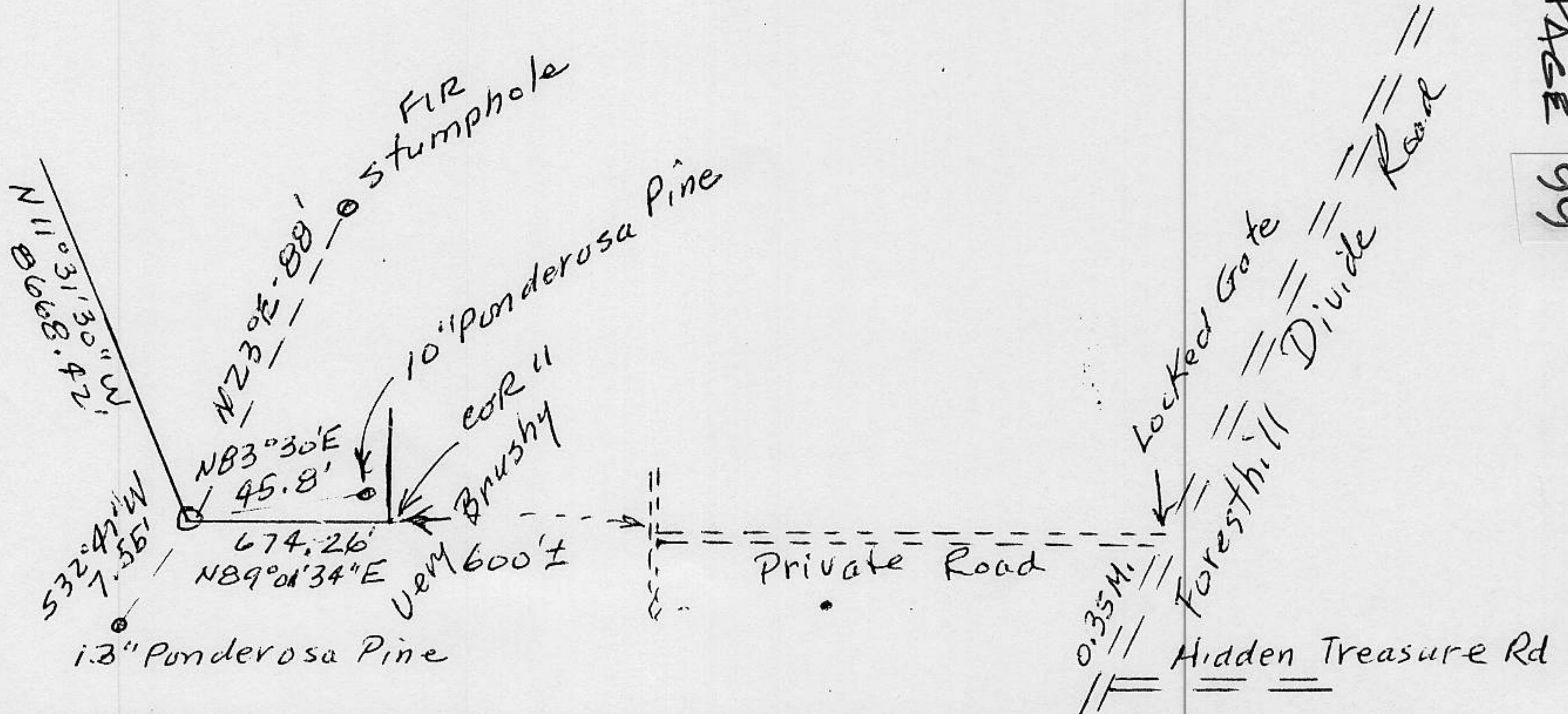
Marked B.T.'s as follows:
A 13" Ponderosa Pine bears S32°47'W - 7.55' "MS 1397 BT"
A 10" Ponderosa Pine bears N83°30'E 45.8' "MS 1397 BT"

CALIFORNIA COORDINATE SYSTEM ORDER: FIRST SECOND THIRD
STATIONS USED: NGS (USC & GS) STATE COUNTY OTHER STATION _____ STATION _____
ZONE _____ ELEVATION _____ NORTHINGS (Y) _____ EASTINGS (X) _____

SEE CONTROL DIAGRAM ON FILE WITH USFS, NEVADA CITY, DAMASCUS CADASTRAL SURVEY, CONTACT NO. 53-9A63-2-IT56 (Fold)

SKETCH: (Include reference tie or witness points, remarks and topo of area)

NOTE: DISTANCES TO B.T.'S WERE MEASURED TO A NAIL IN NOTCH NEAR BASE OF TREE TRUNK.



SURVEYOR'S CERTIFICATE

THIS CORNER RECORD WAS PREPARED BY ME OR UNDER MY DIRECTION IN CONFORMANCE WITH THE LAND SURVEYORS ACT

10/15/92 1992

SIGNED: Emerson J. Smith

No. 3062 L.S. or R.C.E. No. EX

6/30/96

SEAL

COUNTY SURVEYOR'S CERTIFICATE

THE CORNER RECORD WAS RECEIVED _____ 19____

AND EXAMINED AND FILED 12/16 1992

BY: Brian S. McDaniel

TITLE: DEPUTY COUNTY SURVEYOR

DOCUMENT No. _____

STATEMENT ON BACK OF SHEET

YES

NO

Book 3, CORNER RECORDS, PAGE 99

