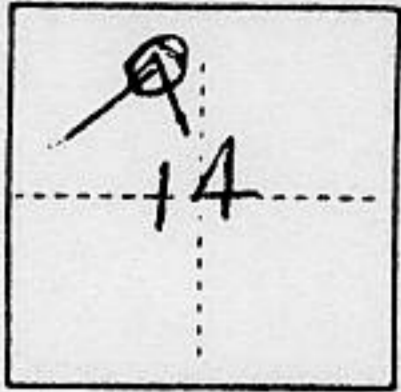


CORNER RECORD

COUNTY OF PLACER T. 15N R. 11E MDM MERIDIAN CALIFORNIA

CORNER TYPE: GOV'T. CORNER MEANDER RANCHO CONTROL OTHER

CORNER IDENTIFICATION — DATE OF VISIT 10/2/92 1992
COR 4 of MS 1397 Mountain Gate P.M.



CORNER — LEFT AS FOUND FOUND AND TAGGED REESTABLISHED OBLITERATED CORNER REBUILT

PHYSICAL DESCRIPTION OF CORNER FOUND; EVIDENCE AND METHOD USED TO IDENTIFY OR REESTABLISH

Found R.R. Iron with 1 5/8" Base marked 24 MGP M - BL PM - DPM on side and LS 3062 on Top. per ROS 5/102
STUMPHOLE OF LARGE PINE BEARS N60°45'W - 35' (ORIG. BT)

PHYSICAL DESCRIPTION OF MONUMENTS REBUILT OR PERPETUATED

Marked B.T.'s as follows:

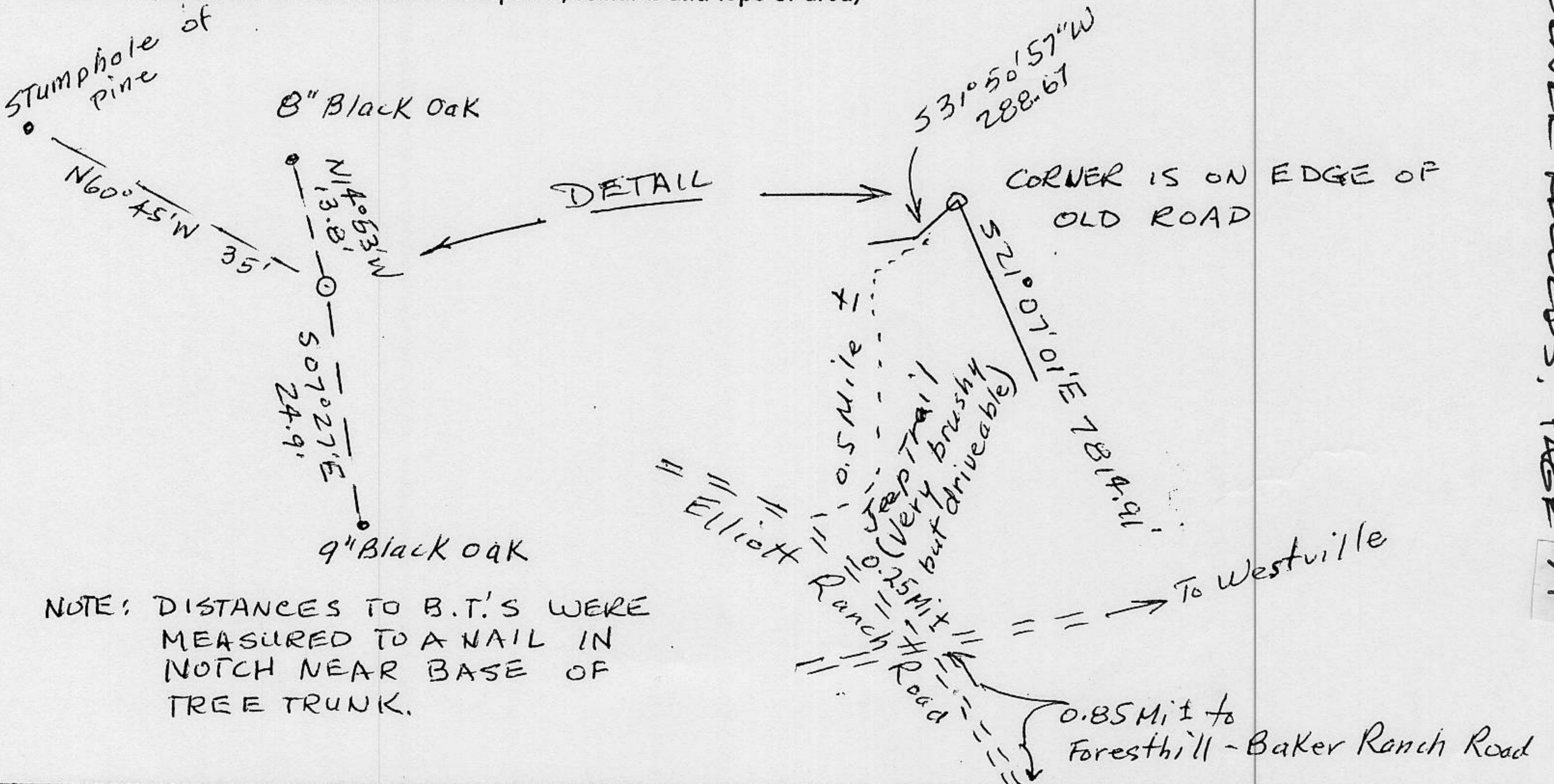
A 8" Black oak bears N14°53'W - 13.8' "MS 1397 BT"
A 9" Black oak bears S07°27'E - 24.9' "MS 1397 BT"

CALIFORNIA COORDINATE SYSTEM ORDER: FIRST SECOND THIRD
STATIONS USED: NGS (USC & GS) STATE COUNTY OTHER STATION _____ STATION _____
ZONE _____ ELEVATION _____ NORTHINGS (Y) _____ EASTINGS (X) _____

(Fold)

SEE CONTROL DIAGRAM ON FILE WITH USFS, NEVADA CITY, DAMASCUS CADASTRAL SURVEY, — CONTRACT NO. 53-9A63-2-IT56

SKETCH: (Include reference tie or witness points, remarks and topo of area)



NOTE: DISTANCES TO B.T.'S WERE MEASURED TO A NAIL IN NOTCH NEAR BASE OF TREE TRUNK.

SURVEYOR'S CERTIFICATE

THIS CORNER RECORD WAS PREPARED BY ME OR UNDER MY DIRECTION IN CONFORMANCE WITH THE LAND SURVEYORS ACT

SIGNED: Emerson Smith 15/92 1992
L.S. or R.C.E. No. LS 3062



SEAL

COUNTY SURVEYOR'S CERTIFICATE

THE CORNER RECORD WAS RECEIVED _____ 19____
AND EXAMINED AND FILED 12/16 1992

BY: Bruce L. McDaniel
TITLE: DEPUTY COUNTY SURVEYOR

DOCUMENT No. _____

STATEMENT ON BACK OF SHEET

YES NO

Book 3, Corner Records, Page 97