

CORNER RECORD

COUNTY OF PLACER T. 17N. R. 14E. M.D. MERIDIAN CALIFORNIA

CORNER TYPE: GOV'T. CORNER MEANDER RANCHO CONTROL OTHER

CORNER IDENTIFICATION - DATE OF VISIT 9-15 1989



LOTS 29 + 30 BLOCK "P" ICE LAKES UNIT #2
BOOK "G" OF MAPS PAGE 1

CORNER - LEFT AS FOUND FOUND AND TAGGED REESTABLISHED OBLITERATED CORNER REBUILT

PHYSICAL DESCRIPTION OF CORNER FOUND: EVIDENCE AND METHOD USED TO IDENTIFY OR REESTABLISH _____

- FOUND 1" IRON PIPE
- FOUND REMAINS OF 2"x2" HUB, SET 3/4" IRON PIPE W/PLASTIC PLUG STAMPED L.S. 5549
- FOUND 1/2" REBAR
- FOUND 2"x2" HUB W/TAG L.S. 2089, SET 3/4" IRON PIPE W/PLASTIC PLUG STAMPED L.S. 5549
- ✘ CORNER LOCATED IN 32" LODGEPOLE PINE TREE - NOTHING FOUND

PHYSICAL DESCRIPTION OF MONUMENTS REBUILT OR PERPETUATED _____

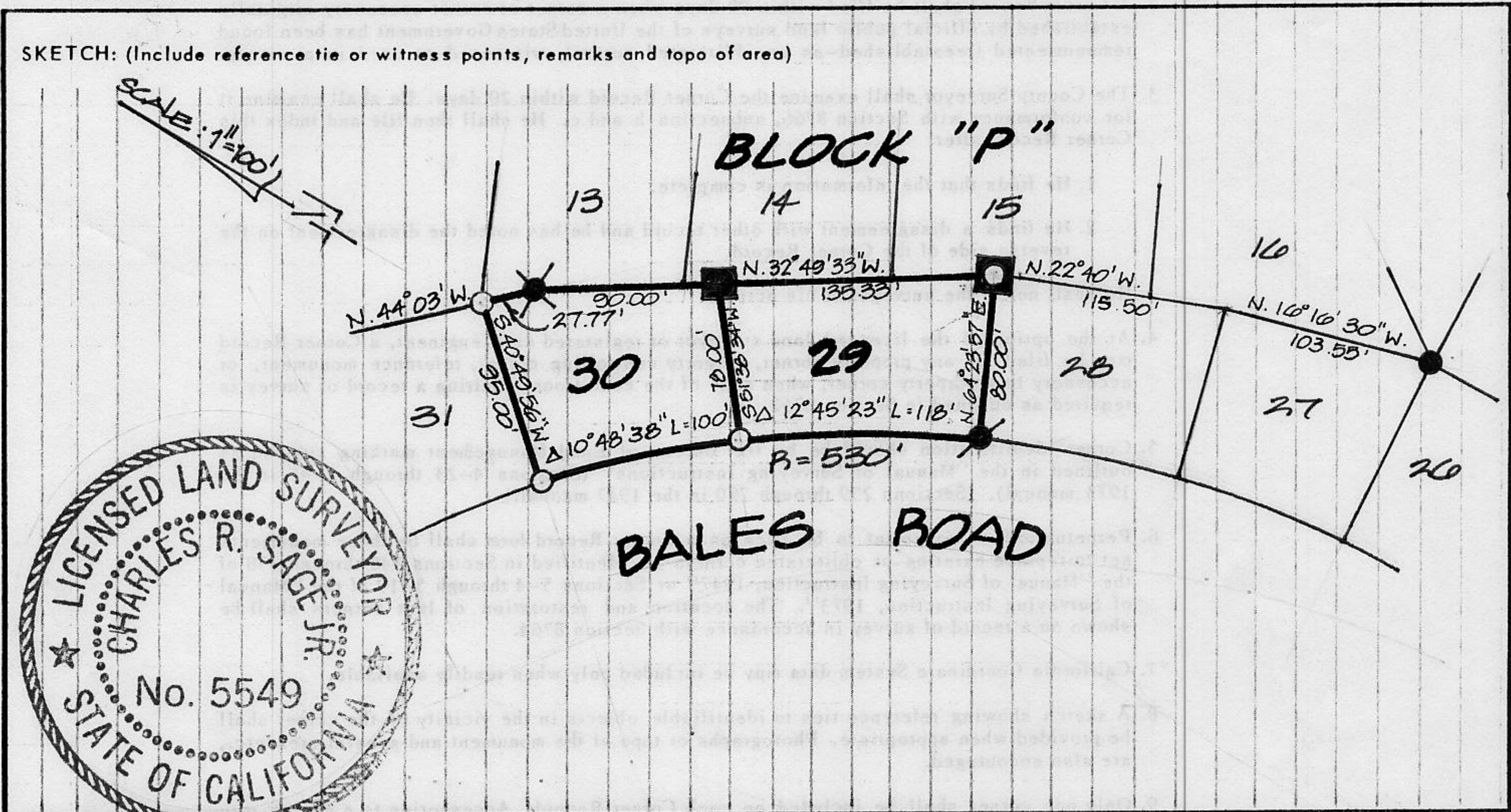
- SET 3/4" IRON PIPE W/PLASTIC PLUG STAMPED L.S. 5549

CALIFORNIA COORDINATE SYSTEM ORDER: FIRST SECOND THIRD

STATIONS USED: NGS (USC & GS) STATE COUNTY OTHER STATION _____ STATION _____

ZONE _____ ELEVATION _____ NORTHINGS (Y) _____ EASTINGS (X) _____

SKETCH: (Include reference tie or witness points, remarks and topo of area)



SURVEYOR'S CERTIFICATE

THIS CORNER RECORD WAS PREPARED BY ME OR UNDER MY DIRECTION IN CONFORMANCE WITH THE LAND SURVEYORS ACT ON 9-25 1989

SIGNED: Charles R. Sage Jr.

L.S. or R.C.E. No.: C.S. 5549 EXP. 6-30-93

SEAL

COUNTY SURVEYOR'S CERTIFICATE

THIS CORNER RECORD WAS RECEIVED 12/15 1991 AND EXAMINED AND FILED 6/8 1992

BY: Brian L. McDaniel

TITLE: DEPUTY COUNTY SURVEYOR

DOCUMENT No. _____

STATEMENT ON BACK OF SHEET

YES NO

Book 3, CORNER RECORDS, PAGE 37