

### CORNER RECORD

COUNTY OF PLACER T. 17N. R. 15E. M.D.B. & MERIDIAN CALIFORNIA

CORNER TYPE: GOV'T. CORNER  MEANDER  RANCHO  CONTROL  OTHER   
CORNER IDENTIFICATION - DATE OF VISIT 9-22 1989



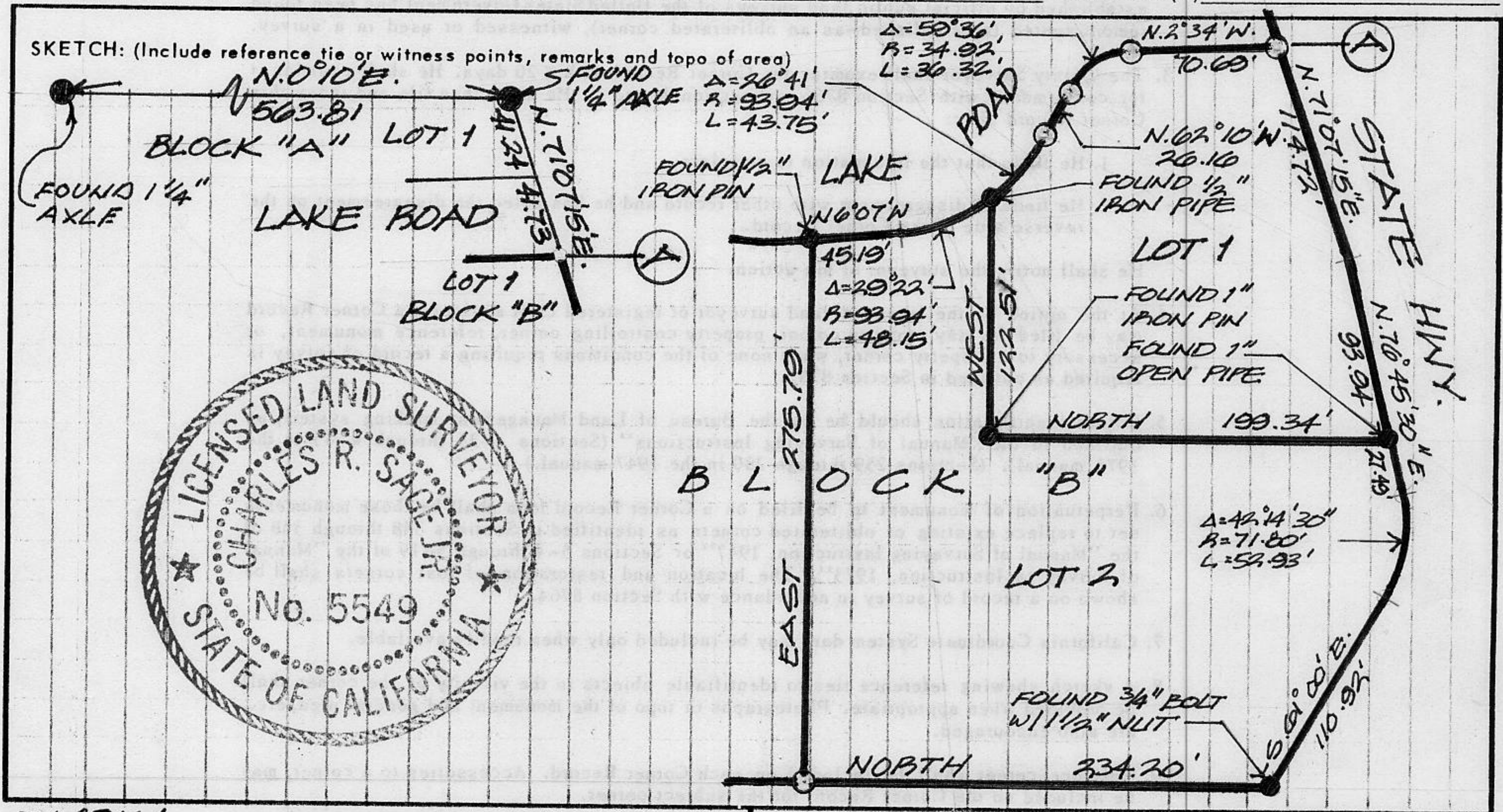
**LOTS 1 & 2 BLOCK "B" JOHN ELLIS SUBD.  
BOOK "D" OF MAPS PAGE 70**

CORNER - LEFT AS FOUND  FOUND AND TAGGED  REESTABLISHED OBLITERATED CORNER  REBUILT

PHYSICAL DESCRIPTION OF CORNER FOUND: EVIDENCE AND METHOD USED TO IDENTIFY OR REESTABLISH  
MONUMENTS FOUND AS NOTED IN SKETCH BELOW

PHYSICAL DESCRIPTION OF MONUMENTS REBUILT OR PERPETUATED  
0 SET 3/4" IRON PIPE W/ PLASTIC PLUG STAMPED L.S. 5549

CALIFORNIA COORDINATE SYSTEM ORDER: FIRST  SECOND  THIRD   
STATIONS USED: NGS (USC & GS)  STATE  COUNTY  OTHER  STATION \_\_\_\_\_ STATION \_\_\_\_\_  
ZONE \_\_\_\_\_ ELEVATION \_\_\_\_\_ NORTHINGS (Y) \_\_\_\_\_ EASTINGS (X) \_\_\_\_\_



**SURVEYOR'S CERTIFICATE**  
 THIS CORNER RECORD WAS PREPARED BY ME OR UNDER MY DIRECTION IN CONFORMANCE WITH THE LAND SURVEYORS ACT ON 10-2 1989  
 SIGNED: Charles R. Sage, Jr.  
 L.S. or R.C.E. No.: L.S. 5549 EXP 6-30-93  
 SEAL

**COUNTY SURVEYOR'S CERTIFICATE**  
 THIS CORNER RECORD WAS RECEIVED 12/15 1991  
 AND EXAMINED AND FILED 6/8 1992  
 BY: David L. McDaniel  
 TITLE: DEPUTY COUNTY SURVEYOR  
 DOCUMENT No. \_\_\_\_\_  
 STATEMENT ON BACK OF SHEET YES  NO