

## Probation

---

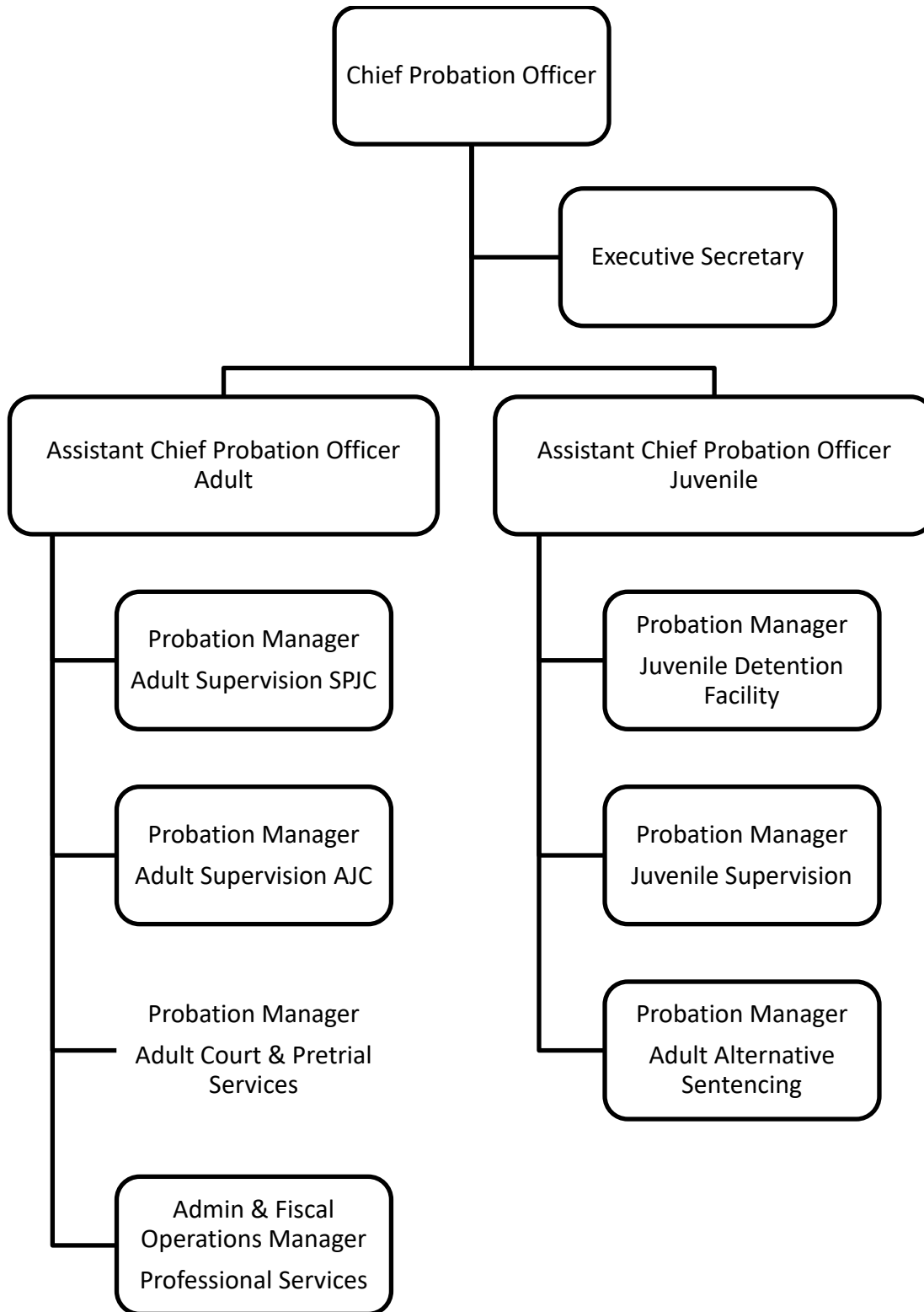
### Mission Statement:

The mission of the Probation Department is to promote the safety of the citizens of Placer County by conducting investigations for the court, enforcing court orders, ensuring victims' rights, engaging in crime prevention partnerships, and facilitating the resocialization of offenders through the use of evidence-based supervision and best practices.

<b>Probation COST CENTER SUMMARY Fiscal Year 2020-21</b>					
<b>Cost Center</b>	<b>FY 2017-18 Actuals</b>	<b>FY 2018-19 Actuals</b>	<b>FY 19-20 Final Budget</b>	<b>FY 20-21 Final Budget</b>	<b>YOY % Change</b>
<b>Public Safety Fund</b> Probation	\$ 26,431,009	\$ 29,758,705	\$ 31,622,682	\$ 33,791,039	6.86%

<b>Funded Positions</b> Probation	147	147	149	149	
<b>Total Funded Positions</b>	<b>147</b>	<b>147</b>	<b>149</b>	<b>149</b>	<b>0.00%</b>
<b>Total Allocated Positions</b>	<b>152</b>	<b>152</b>	<b>152</b>	<b>149</b>	<b>-1.97%</b>

# Probation



## Probation

---

### Probation Office – Cost Center 18001

#### Purpose:

The Probation Department's adult services are organized to provide a continuum of services for adults at all stages of the criminal justice system, from Court Services, Pre-Trial Services, Alternative Sentencing, Placer Re-Entry Program (PREP) and Community Supervision. Under the auspices of these five programs fall different services designed to assist the Court, redirect and supervise appropriate offenders in the community, hold offenders accountable, while redirecting behavior and providing safety to the community.

The Probation Department's juvenile services are organized to provide a continuum of services for youth at all stages of the criminal justice system, from early Delinquency/ Crime Prevention, Court Services, Detention and Treatment Services, and Supervision Services. Under the auspices of these four programs fall different services designed to redirect behavior, provide accountability, promote family reunification and provide safety to the community.

#### Major Budget Adjustments and Initiatives:

- Increase in Equipment of \$40,000 for purchase of radios.
- Increase in Project Costs of \$437,804 for case management software upgrade.
- Increase in State Aid – Other Programs of \$143,756 mainly driven by Juvenile Justice Crime Prevention Act funding.
- Increase in State Aid – Public Safety Services – Proposition 172 of \$153,407.
- Increase in State Aid – Sales Tax Realignment for Public Safety of \$446,899.

Program Title	Program Description	Program Cost
Adult Probation Court Services	The selection of an appropriate sentence is one of the most important decisions to be made in the criminal justice system. Court Services supports the goal of assisting judicial officers in making sentencing decisions and assists corrections and community corrections officials in supervising defendants. Court Services are State mandated and consist of Probation Officers preparing written reports for the Court by conducting a factual and thorough investigation into a defendant's behavior, history, assets, impact on victims, mitigating and aggravating circumstances, assessing future risk and identifying needs to reduce reoffending behavior. Additionally, these reports provide judicial officers with reasoned sentencing options which conform to statutory and Case Law requirements. These reports include the terms and conditions of probation, if eligible, to promote accountability and community safety, and rehabilitation for the offender utilizing evidence-based programming. Through the Court process, Probation works to ensure victims' rights and establish victim restitution. Beginning in January 2018, reports now include an additional, post-conviction, mandated report as a result of Prop 63. It is now critical that Probation complete Prop 63 time-sensitive reports or risk a delay in sentencing of offenders and/or a negative impact on Court calendars.	\$2,357,470
Adult Probation Pretrial Services	Pretrial Services assists the Superior Court and provides community supervision to defendants pending legal proceedings. Pretrial Services performs multiple functions that are critical to the effective operation of our local criminal justice system. Probation Officers assess newly arrested defendants in the Jail utilizing a risk assessment designed to be predictive of an individual's risk of failing to appear in Court and commit a new offense pending disposition of their case. Probation Officers represent the department's recommendations in Court	\$1,853,026

## Probation

	and assist in releasing defendants from the Jail. They enforce the terms and conditions of release that may include: making court appearances, abstaining from the use of alcohol and drugs, search and seizure, and stay away orders from victims. Specific service modes include Supervised Release and Home Confinement with Electronic Monitoring (GPS).	
Adult Probation Alternative Sentencing	Alternative Sentencing services create and maintain community-based alternatives to incarceration. Programs are designed to hold offenders accountable while promoting public safety in the community. Offenders complete their Court ordered sentence under direct Probation Officer supervision while maintaining family structure, retaining employment and housing, obtaining rehabilitative services, and continuing positive ties to the community. Specific service modes for post-conviction participants include: Electronic Monitoring (GPS), Work Release, Drug Court and Adult Placement. Probation Officers enforce program conditions that may include: abstaining from the use of drugs and alcohol, search and seizure, stay away orders from victims, monitoring and tracking community worksites, counseling programs, as well as monitoring offenders participating in residential drug treatment programs.	\$3,143,995
Placer Re-Entry Program	Probation and its partners provide evidence-based services through the innovative Placer Re-Entry Program (PREP) to offenders both in and out of custody in an effort to increase community safety. The Probation Department provides programming and services at multiple locations to 222 offenders in custody and 600 re-integrating back into the community. The Probation Department continues to partner with the California Department of Corrections and Rehabilitation expanding re-entry services provided in Placer County. Probation also collaborated with SCOE to expand PREP services to clients in the North Lake Tahoe area. The Probation Department provides clients instruction in cognitive behavioral change, parenting and substance abuse education. Additionally, partnerships were established with other governmental and community-based organizations to provide GED preparation classes, vocational training, child support payment information, batterer's treatment programming and literacy education, in an effort to support clients successfully complete probation and decrease recidivism.	\$1,256,375
Adult Probation Community Supervision Services	Community Supervision provides structure and accountability for those offenders released back into our community after being granted formal probation or released under Parole Realignment (Post Release Community Supervision/Mandatory Supervision). Probation Officers promote public safety by supervising offenders in the community and ensure compliance with the terms and conditions of release. Officers also complete risk and needs assessments and develop collaborative case plans based on these assessments. Officers use evidence-based supervision and treatment practices to include linking offenders to community-based organizations and integrated service partners, providing Re-Entry Programing, vocational training and wraparound supervision and support to reduce recidivism and incarceration.  Specific service modes for offenders under community supervision include: risk based offender supervision, DUI, Domestic Violence, Transient and Sex Offender caseloads. Offenders identified to pose the greatest risk to public safety are placed on a specialized joint task force caseload (Special Investigations Unit) comprised of multiple local law enforcement agencies. Additionally, our officers work collaboratively with Federal, State and local law enforcement agencies conducting operations to suppress gang, narcotic, DUI, violent and sex offender criminal conduct. They also track down and arrest absconded offenders, holding	\$8,844,946

## Probation

	<p>them accountable, bringing them back before the justice system. Probation Officers enforce court orders through office contacts, random unannounced home visits, drug and alcohol testing, tracking and monitoring, evidence based programming, DUI terms, Sex Offender terms, Elder Abuse terms, Domestic Violence terms, weapon prohibitions, stay away orders for victims, and the collection of victim restitution. Grant funding from Proposition 47 has allowed for the creation of an integrated multi-disciplinary team to provide Wraparound supervision and support for moderate to high risk clients experiencing mental health and/or substance abuse issues.</p>	
<p>Juvenile Probation Delinquency / Crime Prevention Services</p>	<p>Delinquency/Crime Prevention Services include diversion services that target youth who are beyond parental control or are otherwise at risk of delinquency. Diversion Programs include: Citation and Traffic Hearings; Evidence Based Programs; the Placer County Sheriff's Activities League; School Attendance Mediation; Informal Probation to ensure victim restitution or Community Service is completed; and the Crisis Resolution Center. Additionally, the Juvenile Division provides access to structured community resources that assist youth and family members to build and utilize their own family resources and better equip them to become independent of the Juvenile Justice or Child Welfare Systems.</p>	<p>\$1,155,477</p>
<p>Juvenile Probation Court/Pre-Adjudication Services</p>	<p>Court Services are State mandated and consist of Probation Officers preparing written reports with information on a youth's family and educational background, any prior probation history, previous arrest history and other relevant information. These investigations and reports assist the Superior Court Judges in making informed dispositional decisions. This report includes the Probation Officers' dispositional recommendations, including the terms and conditions of probation, to provide rehabilitation for the youth utilizing evidence-based programming, and accountability to insure community safety. Through the Court process, Probation works to ensure victim rights and establish victim restitution. The Probation Officers also complete the evidence-based risk and needs assessment, designed to create and implement case plans focused on addressing the youth's identified behavioral indicators in addition to social and educational needs. Alternative disposition pre-adjudication supervision services allow the youth to be placed on any of several different programs in lieu of, or in addition to, confinement. These options include: home supervision, and electronic (GPS and/or alcohol) monitoring. Alternatives to confinement may be employed while awaiting further Court hearings, or as a tool to hold youth accountable while encouraging the development needed to support success.</p>	<p>\$1,058,205</p>
<p>Juvenile Probation Detention and Treatment Services</p>	<p>The 78 bed Juvenile Detention Facility (JDF) is a State mandated 24-hour secure detention facility housing male and female youth for their safety and public safety, who are pending court, sentenced or awaiting placement. The facility also houses youth who have been charged as adults. Programming within the facility includes education, health, mental health, social awareness, and special programs. Programming is designed to enhance safety and security, while providing youth opportunities and direction to change their behavior in order to promote successful transition back into the community and reunification with their families. These programs are taught by contracted providers, volunteers and probation staff.</p> <p>Youth may be ordered to be placed out of their home by the Superior Court into a group home or boot camp for supervision, behavior modification and treatment. Probation Officers are mandated by Federal and State government regulation to have in person contact with these youth on a monthly basis. These costly, out of</p>	<p>\$7,385,777</p>

## Probation

	<p>home placements are a last resort and often avoided by the array of interventions employed by the Probation Department and partner agencies.</p> <p>The JDF has implemented a new commitment program, Placer Youth Center (Youth Center). The Youth Center is designed to provide youth and their families with local community resources and tools to ensure youth can transition back into their families and the community successfully. The goal for each of the youth is to focus on family reunification and/or independent living while working on substance use, mental health, employment and vocational skills, cognitive behavioral skills, transition planning, and positive intervention responses. Youth will work with an individualized team to develop a plan to ensure the youth and their family (as needed) are provided with services in and out of the facility based on their needs and goals.</p>	
Juvenile Probation Supervision Services	<p>Probation Officers assigned to Supervision Services monitor youth placed on probation supervision in the community. Youth who have been placed on probation supervision receive a risk and needs assessment to determine the type and level of service needed and are then supervised based on their individualized case plan. Probation Officers promote public safety by supervising youth in the community and ensuring compliance with the terms and conditions of probation which may include: enforcing curfews, school attendance, substance abuse counseling, drug and alcohol testing, gang conditions, stay away orders for victims, and the collection of victim restitution. Officers use evidence-based supervision and treatment practices, including safety and behavioral plans, to improve the likelihood of successful transition of youth back into our communities. Supervision Services maintain risk-based supervision caseloads including: Wraparound Services and Juvenile Drug Court in lieu of out of home placement.</p>	\$2,074,646
Administrative Leadership	<p>The Placer County Probation Department has staff located in six County facilities, as well as in the offices of four local law enforcement agencies. Administrative Leadership captures the costs of Executive Leadership, as well as operating costs not easily attributed to any single program as listed above. Executive Leadership includes our Chief Probation Officer and two Assistant Chief Probation Officers (one responsible for adult operations and the other for juvenile operations). Our Executive Leadership has final responsibility for all members of our Department and their actions. Our Executive Leadership promote the safety of the citizens of Placer County by ensuring our staff facilitate the resocialization of offenders through the use of evidence-based supervision and best practices. In addition to Executive Leadership, the costs of fiscal support (budgeting and fiscal monitoring, grants management, accounts payable, receivables and payroll), information technology support (including desktop support, database management and outside agency systems coordination), data research and validation (used to provide metrics associated with specific programs and their effectiveness), and clerical support. Building costs, including lease costs, utilities and associated expenses for facilities housing multiple programs are included within this program.</p>	\$4,661,122

**County of Placer**  
**Financing Sources and Uses by Budget Unit by Object**  
**Governmental Funds**  
**Fiscal Year 2020 - 21**

**Budget Unit:** Public Safety Fund / Public Safety Fund  
Grants  
**Function:** Public Protection  
**Cost Center:** CC18001 Probation

Detail by Revenue Category and Expenditure Object	2018 - 19 Actual	2019 - 20 Adopted Budget	2020 -21 Recommended	2020 -21 Adopted by Supervisors
1	2	3	4	5
<b>Revenue</b>				
Law Enforcement Services	\$326,624	\$320,000	\$250,000	\$250,000
Institutional Care and Services	\$353,745	\$380,000	\$450,000	\$450,000
Other Fees and Charges	\$9,366			
Other Court Fines	\$172,268			
Forfeitures and Penalties		\$5,000	\$5,000	\$5,000
Federal Aid - Medi-Cal	\$12,600			
Federal Aid - Other Programs		\$695,000	\$785,000	\$785,000
State Aid - Other Programs	\$40,520	\$3,465,244	\$3,609,000	\$3,609,000
State Aid - Public Safety Services-Proposition 172	\$6,060,342	\$6,174,713	\$6,328,120	\$6,328,120
State Aid - Sales Tax Realignment for Public Safety	\$3,746,205	\$2,075,822	\$2,522,721	\$2,522,721
State Aid - Supplemental Law Enforcement	\$1,680,000			
Aid from Other Placer County	\$122,336			
Insurance - Other	\$7,555	\$10,000	\$10,000	\$10,000
Miscellaneous	\$1,653	\$10,000	\$10,000	\$10,000
Investment Income	(\$2,181)	\$700	\$700	\$700
Contributions from General Fund	\$18,060,870	\$18,470,739	\$19,820,485	\$19,820,485
Operating Transfers In	\$5,080	\$15,000		
Fair Market Value Adjustment	(\$1,008)			
<b>Total Revenue</b>	<b>\$30,595,976</b>	<b>\$31,622,218</b>	<b>\$33,791,026</b>	<b>\$33,791,026</b>
<b>Expenditures / Appropriations</b>				
Clothing and Personal	\$9,973	\$9,000	\$12,272	\$12,272
Communication Services Expense	\$281,918	\$312,216	\$165,842	\$165,842
Comp for Absence - Illness	\$7,536	\$20,000		
Employee Group Insurance	\$1,983,524	\$2,251,816	\$2,318,240	\$2,318,240
Retired Employee Group Insurance	\$590,019			
Equipment	\$33,049	\$60,000	\$100,000	\$100,000
Food	\$118,039	\$184,000	\$158,723	\$158,723
Household Expense	\$5,525	\$5,000	\$5,000	\$5,000
Refuse Disposal	\$268			
Maintenance - Janitorial	\$144,044	\$148,482		

Insurance	\$109,877	\$120,230	\$112,355	\$112,355
Transfer Out A-87 Costs	\$1,252,188	\$1,221,736	\$1,455,456	\$1,455,456
Intra Fund Services	\$733,567	\$101,714	\$146,867	\$146,867
Witness Fees	\$418			
Parts	\$2,716	\$4,000	\$2,000	\$2,000
Maintenance	\$54,108	\$11,000	\$11,000	\$11,000
Fuels & Lubricants	\$4,634	\$4,500	\$5,000	\$5,000
Campus Services - PCGC	\$18,580	\$18,704		
Drug & Alcohol Testing	\$68,508	\$100,000	\$70,000	\$70,000
Professional / Membership Dues	\$11,873	\$10,500	\$12,000	\$12,000
Small Tools & Instruments	\$706			
Misc Expense	\$2,073	\$20,000	\$9,000	\$9,000
School/Other Agency Expenditures	\$1,246	\$8,000	\$13,000	\$13,000
Printing	\$75,056	\$85,000		
Other Supplies	\$64,528	\$75,000	\$53,017	\$53,017
Postage	\$28,949	\$27,960	\$15,751	\$15,751
Procurement Card Purchase / Clearing Account	\$6,108			
Operating Materials	\$2,153			
Professional and Special Services - General	\$1,544,025	\$2,883,330	\$3,088,986	\$3,088,986
Professional and Special Services - Technical, Engineering and Environmental	\$475,481	\$455,881	\$619,264	\$619,264
Professional and Special Services - County	\$30,866		\$201,301	\$201,301
Professional and Special Services - Information Technology	\$883,356	\$980,325	\$1,434,253	\$1,434,253
Professional and Special Services - Health	\$2,629			
Rents and Leases - Equipment		\$163,076	\$175,000	\$175,000
Rents and Leases - Buildings & Improvements	\$29,777	\$42,000	\$65,000	\$65,000
Retirement	\$4,431,090	\$5,067,976	\$5,543,668	\$5,543,668
Payroll Tax	\$955,406	\$981,828	\$984,396	\$984,396
Other Postemployment Benefits (OPEB)	\$783,282	\$1,016,925	\$1,016,927	\$1,016,927
401 (k) Employer Match	\$3,602	\$6,750	\$7,503	\$7,503
Salaries and Wages	\$11,772,860	\$12,520,222	\$12,955,343	\$12,955,343
Salary Savings		(\$892,507)	(\$935,728)	(\$935,728)
Employee Paid Sick Leave		\$5,000	\$15,000	\$15,000
Extra Help	\$201,130	\$190,000	\$240,000	\$240,000
Overtime and Call Back	\$372,601	\$350,004	\$375,000	\$375,000
Sick Leave Payoff	\$39,446		\$141,000	\$141,000
Cafeteria Plans (Non-PERS)	\$538,503	\$613,184	\$622,629	\$622,629
Uniform Allowance	\$135,628	\$133,768	\$103,513	\$103,513
Taxable Meal Reimbursements		\$5,000	\$5,000	\$5,000
Employee Benefits Systems	\$227,664	\$185,844	\$187,560	\$187,560



PC Acquisition	\$71,900	\$105,000		
Small Equipment	\$108,384			
Special Department Expense	\$26,749	\$91,604	\$35,000	\$35,000
Law Enforcement Special Expenses	\$324,376	\$72,000	\$25,000	\$25,000
Safety Clothing - Other Agency	\$849	\$15,000	\$5,000	\$5,000
Project Costs			\$437,804	\$437,804
Support and Care of Persons	\$834,133	\$721,370	\$700,000	\$700,000
Operating Transfer Out	(\$404,543)			
Transportation and Travel	\$413,941	\$472,028	\$433,162	\$433,162
Utilities	\$268,596	\$273,744	\$302,047	\$302,047
Workers Comp Insurance	\$314,406	\$364,472	\$341,888	\$341,888
<b>Total Expenditures / Appropriations</b>	<b>\$29,997,325</b>	<b>\$31,622,682</b>	<b>\$33,791,039</b>	<b>\$33,791,039</b>
<b>Total</b>	<b>\$598,652</b>	<b>(\$464)</b>	<b>(\$13)</b>	<b>(\$13)</b>