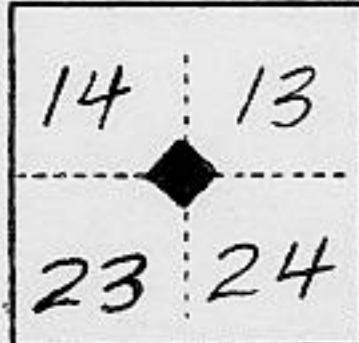


(For County Use Only)

CORNER RECORD

COUNTY OF PLACER T. 15 N R. 14 E MT DIABLO MERIDIAN CALIFORNIA

CORNER TYPE: GOV'T. CORNER MEANDER RANCHO CONTROL OTHER
CORNER IDENTIFICATION — DATE OF VISIT SEPT 27 1983



BASIS OF BEARING : STAFF COMPASS BEARING DECL. 17 DEG. EAST, PER GRANITE CHIEF 7.5 MIN QUAD. ANGLES MEASURED WITH TOPCON GTS-2 THEODOLITE. RECORD () W. BURTON, GLO 1891

CORNER — LEFT AS FOUND FOUND AND TAGGED REESTABLISHED OBLITERATED CORNER REBUILT

PHYSICAL DESCRIPTION OF CORNER FOUND; EVIDENCE AND METHOD USED TO IDENTIFY OR REESTABLISH

FOUND WOOD POST (NOT ORIGINAL) IN STONE MOUND 2 FT DIA X 1 FT HIGH. FROM WHICH A 45" SUGAR PINE WITH PARTIALLY OPEN BLAZE, FACE ROTTED, NO VISIBLE SCRIBING, BEARS N45°E, 21.5 FT, (N45°E, 31 LKS = 20.5 FT) A 34" WHITE FIR SNAG WITH HEALED BLAZE BEARS S60°51'E, 164.9 FT, (S62°E, 198 LKS = 130.7 FT), A STUMPHOLE AND WEATHERED PINE LOG WITH VISIBLE SCRIBING BEARS S37°46'W, 66.1 FT (S36°W, 100 LKS = 66 FT) SEE REVERSE SIDE FOR OTHER ORIGINAL BT

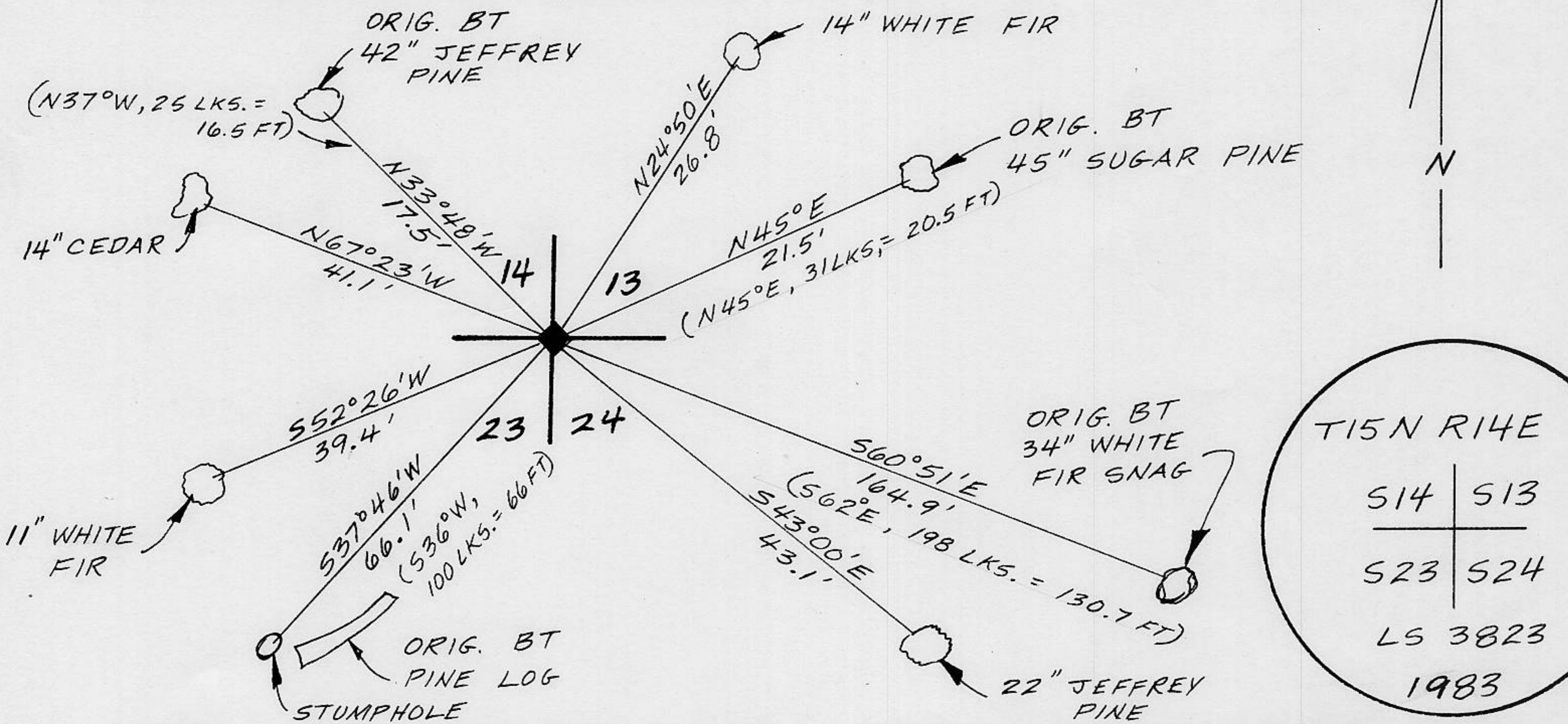
PHYSICAL DESCRIPTION OF MONUMENTS REBUILT OR PERPETUATED

IN CENTER OF FOUND STONE MOUND SET 2½" DIA X 30" LONG ALUM. PIPE WITH ¾" ALUM CAP. MAGNETS ATTACHED TO CAP AND BASE. DUE TO SHALLOW ROCKY SOIL, PIPE COULD NOT BE PLACED IN GROUND. RAISED A MOUND 4 FT DIA X 26" HIGH AROUND PIPE. FROM WHICH A 14" WHITE FIR SCRIBED " T15NR14ES13BT " BEARS N24°50'E, 26.8 FT; 22" JEFFREY PINE SCRIBED " T15NR14ES24BT " BEARS S43°00'E, 43.1 FT; A 11" WHITE FIR SCRIBED " T15NR14ES23BT " BEARS S52°26'W, 39.4 FT; 14" CEDAR SCRIBED " T15NR14ES14BT " BEARS N67°23'W, 41.1 FT

CALIFORNIA COORDINATE SYSTEM ORDER: FIRST SECOND THIRD
STATIONS USED: NGS (USC & GS) STATE COUNTY OTHER STATION _____ STATION _____
ZONE _____ ELEVATION _____ NORTHINGS (Y) _____ EASTINGS (X) _____

(Fold)

SKETCH: (Include reference tie or witness points, remarks and topo of area)

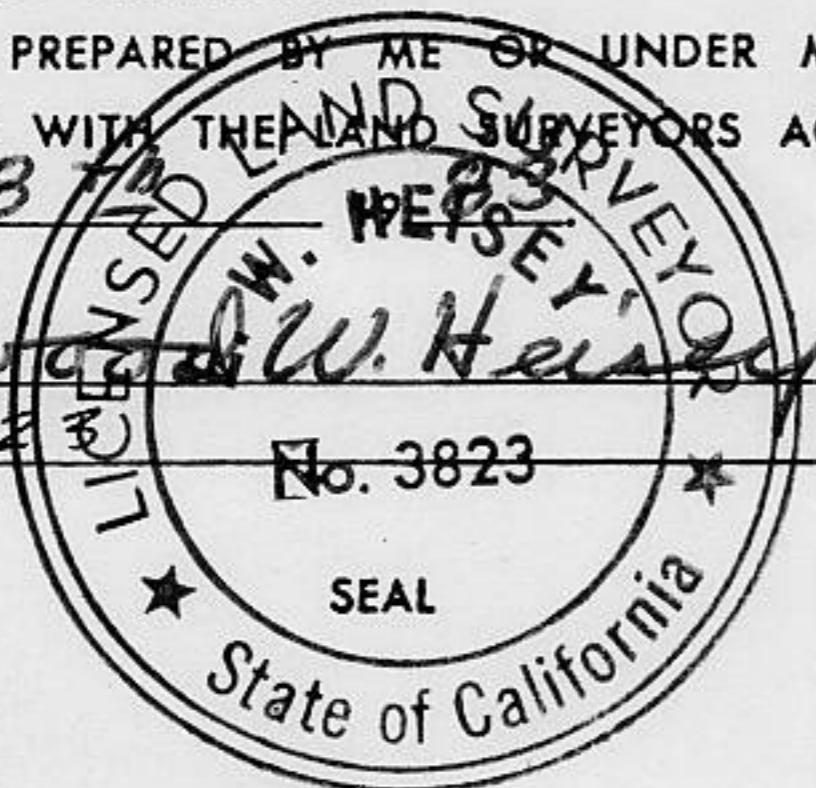


SURVEYOR'S CERTIFICATE

THIS CORNER RECORD WAS PREPARED BY ME OR UNDER MY DIRECTION IN CONFORMANCE WITH THE LAND SURVEYORS ACT ON November 8 1983

SIGNED: Edward W. Healy

L.S. or R.I.C.P. No.: 3823



COUNTY SURVEYOR'S CERTIFICATE

THE CORNER RECORD WAS RECEIVED Dec 1, 1983 AND EXAMINED AND FILED Dec 14, 1983

BY: Meda Smiles
TITLE: Deputy County Surveyor

DOCUMENT No. BK. 1, pg. 91

STATEMENT ON BACK OF SHEET

YES NO

Book 1
Corner Records, page 91

41" JEFFREY PINE WITH HEALED BLAZE BEARS N33°48'W, 17.5 FT (N37°W, 25 LKS =16.5 FT)