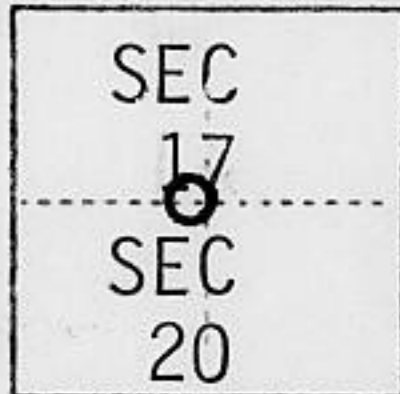


CORNER RECORD

COUNTY OF Placer T. 17N R. 16E M.D. _____ MERIDIAN California

CORNER TYPE: GOV'T. CORNER MEANDER RANCHO CONTROL OTHER

CORNER IDENTIFICATION — DATE OF VISIT _____ 19____



1/4 Corner
Sec 17 & Sec 20

CORNER — LEFT AS FOUND FOUND AND TAGGED REESTABLISHED OBLITERATED CORNER REBUILT

PHYSICAL DESCRIPTION OF CORNER FOUND; EVIDENCE AND METHOD USED TO IDENTIFY OR REESTABLISH

Found Snag: Very Deteriorated

PHYSICAL DESCRIPTION OF MONUMENTS REBUILT OR PERPETUATED

None at the corner, established reference ties as noted.

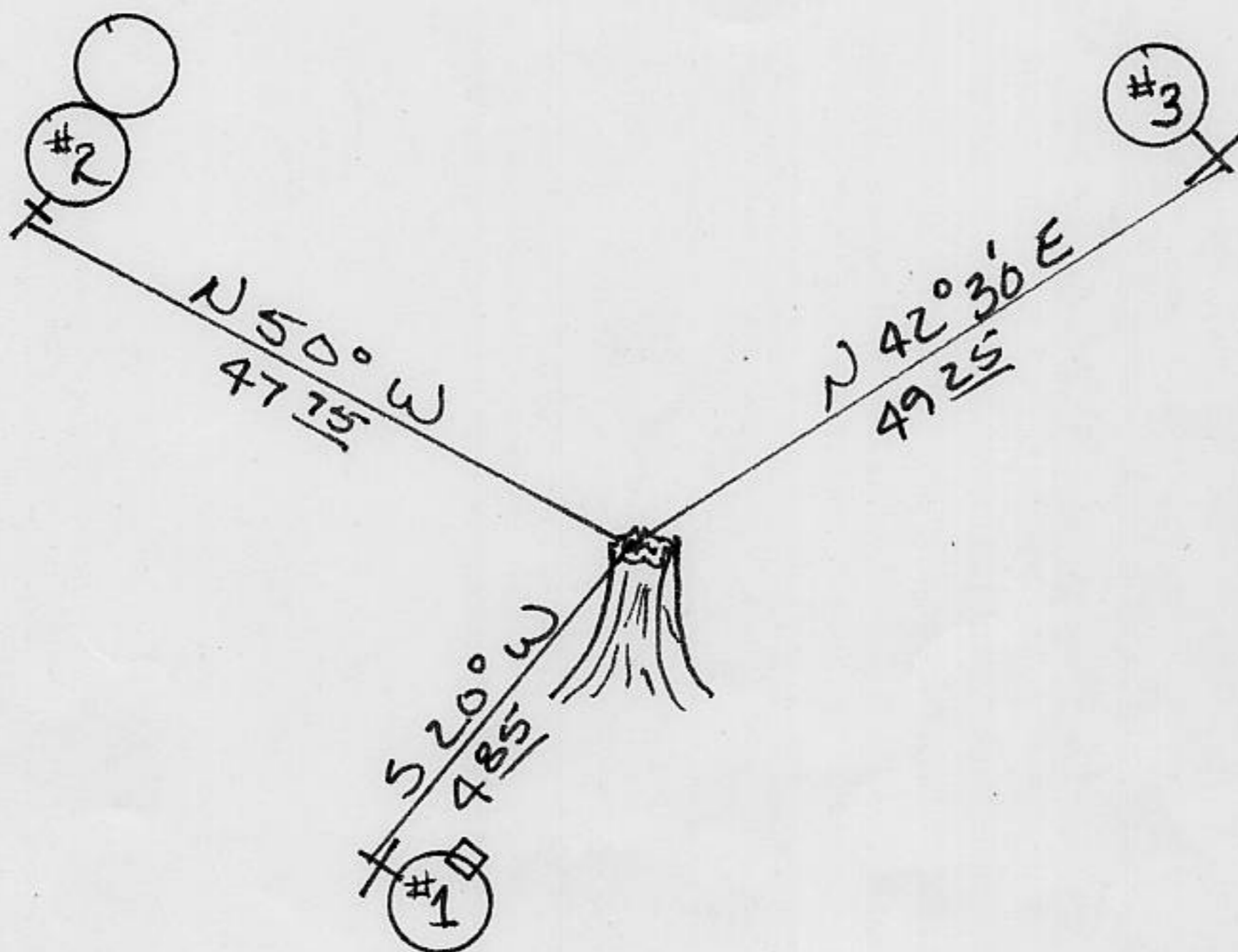
CALIFORNIA COORDINATE SYSTEM ORDER: FIRST SECOND THIRD

STATIONS USED: NGS (USC & GS) STATE COUNTY OTHER STATION _____ STATION _____

ZONE _____ ELEVATION _____ NORTHINGS (Y) _____ EASTINGS (X) _____

(Fold)

SKETCH: (Include reference tie or witness points, remarks and topo of area)



- TREE
- FOUND LOCATION TAG
- ✚ SET BRASS TAG
- RUA LS 4154



SURVEYOR'S CERTIFICATE

THIS CORNER RECORD WAS PREPARED BY ME OR UNDER MY DIRECTION IN CONFORMANCE WITH THE LAND SURVEYORS ACT ON 9/23 1982

SIGNED: Terry L. Castle
L.S. & REC No.: No. 4154

SEAL

COUNTY SURVEYOR'S CERTIFICATE

THE CORNER RECORD WAS RECEIVED Sept. 29, 1982 AND EXAMINED AND FILED October 15, 1982.

BY: Med. Snyder
TITLE Deputy County Surveyor

DOCUMENT No. Book 1, page 77

STATEMENT ON BACK OF SHEET

YES NO

Book 1, Corner Records, pg. 77

① FND 26" Pine with:

SP Land Co.

Location Poster

$\frac{17}{20}$ T. 17 N., R. 16 E.

1/4 Cor is N. 17° E.

7 LKS Hever & Dave

9-4-81

&

Forest Service

Location Poster

$\frac{17}{20}$ T. 17 N., R. 16 E.

Walls & Larson

/53

FND evidence of blaze w/scribe-not able to read

② Twin 24" Pine

Set Brass Tag (RVA L.S. 4154)

On South West side of tree

③ 22" Pine

Set Brass Tag (RVA L.S. 4154)

On South East side of tree

This corner record is submitted to show the perpetuation of a very deteriorated corner and its evidence. The history of the corner can be obtained from:

U.S. Forest Service Office
Tahoe National Forest
Hwy 44/ Coyote Street, Nevada City, CA 95959

Southern Pacific Land Company
Post Office Box 954
Grass Valley, CA 95945