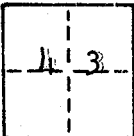


PLACER COUNTY
CORNER RECORD

COUNTY OF Placer T. 12 N. R. 8 E. Mt. Diablo MERIDIAN CALIFORNIA

CORNER TYPE: GOVT. CORNER MEANDER RANCHO CONTROL OTHER
CORNER IDENTIFICATION — DATE OF VISIT January 1975



CORNER — LEFT AS FOUND FOUND AND TAGGED REESTABLISHED OBLITERATED CORNER REBUILT

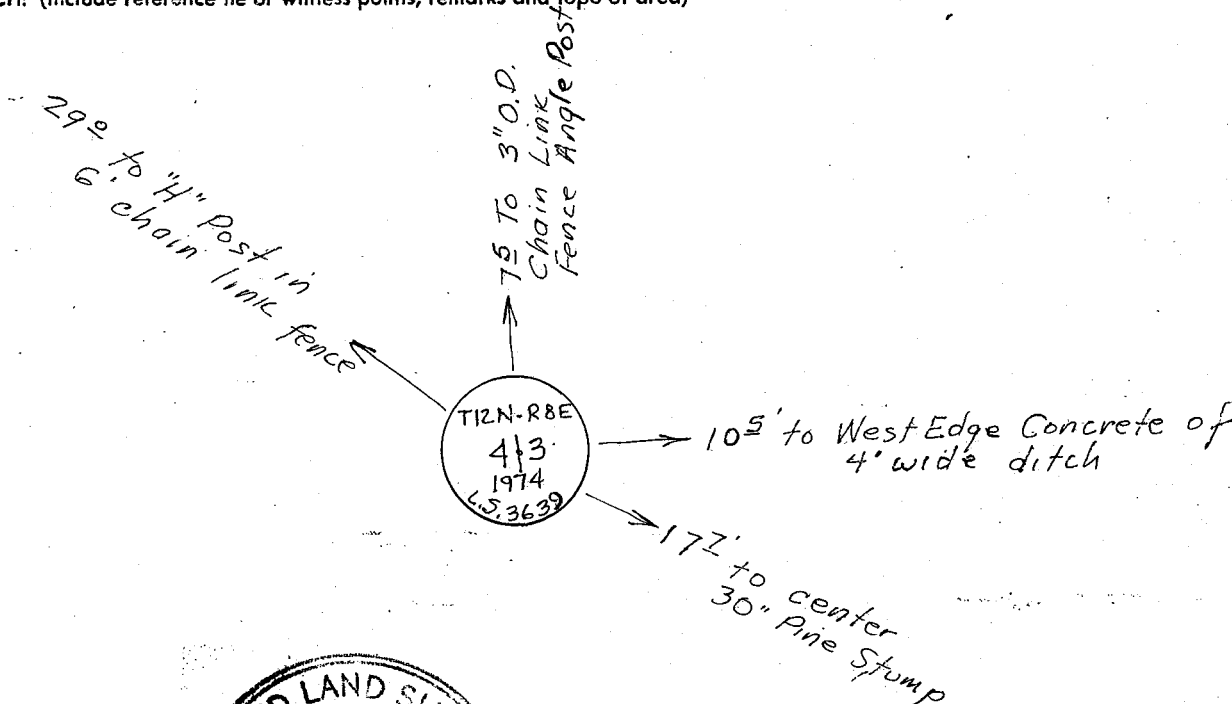
PHYSICAL DESCRIPTION OF CORNER FOUND: EVIDENCE AND METHOD USED TO IDENTIFY OR REESTABLISH
Found Wagon Axle in Rock Mound stamped "4 cor." with L.S. 3639 tag per
Parcel Map No. 71049 filed in Book 6 of Parcel Maps at Page 46

PHYSICAL DESCRIPTION OF MONUMENTS REBUILT OR PERPETUATED

Placed 2 1/2" galvanized pipe over axle and built concrete and rock mound
Cap stamped as shown below.

CALIFORNIA COORDINATE SYSTEM ORDER: FIRST SECOND THIRD
STATIONS USED: NGS (USC & GS) STATE COUNTY OTHER STATION _____ STATION _____
ZONE _____ ELEVATION _____ NORTHINGS (Y) _____ EASTINGS (X) _____

SKETCH: (Include reference tie or witness points, remarks and topo of area)

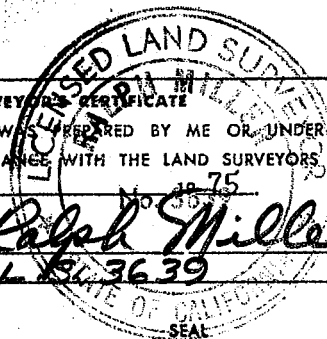


SURVEYOR'S CERTIFICATE

THIS CORNER RECORD WAS PREPARED BY ME OR UNDER MY DIRECTION IN CONFORMANCE WITH THE LAND SURVEYORS ACT ON January 1975

SIGNED: Ralph Miller

L.S. or R.G. No.: L.S. 3639



Placer COUNTY SURVEYOR'S CERTIFICATE

THE CORNER RECORD WAS RECEIVED Jan 31 1975 AND EXAMINED AND FILED February 24 1975

BY: Ned G. Snyder
TITLE: Deputy County Surveyor

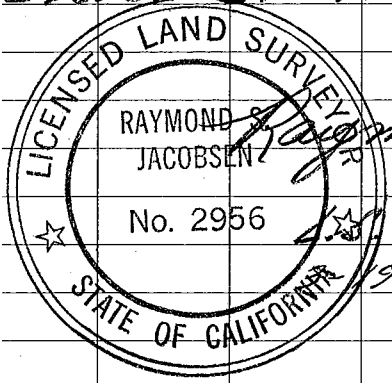
DOCUMENT No. _____

STATEMENT ON BACK OF SHEET

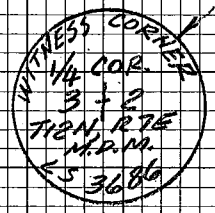
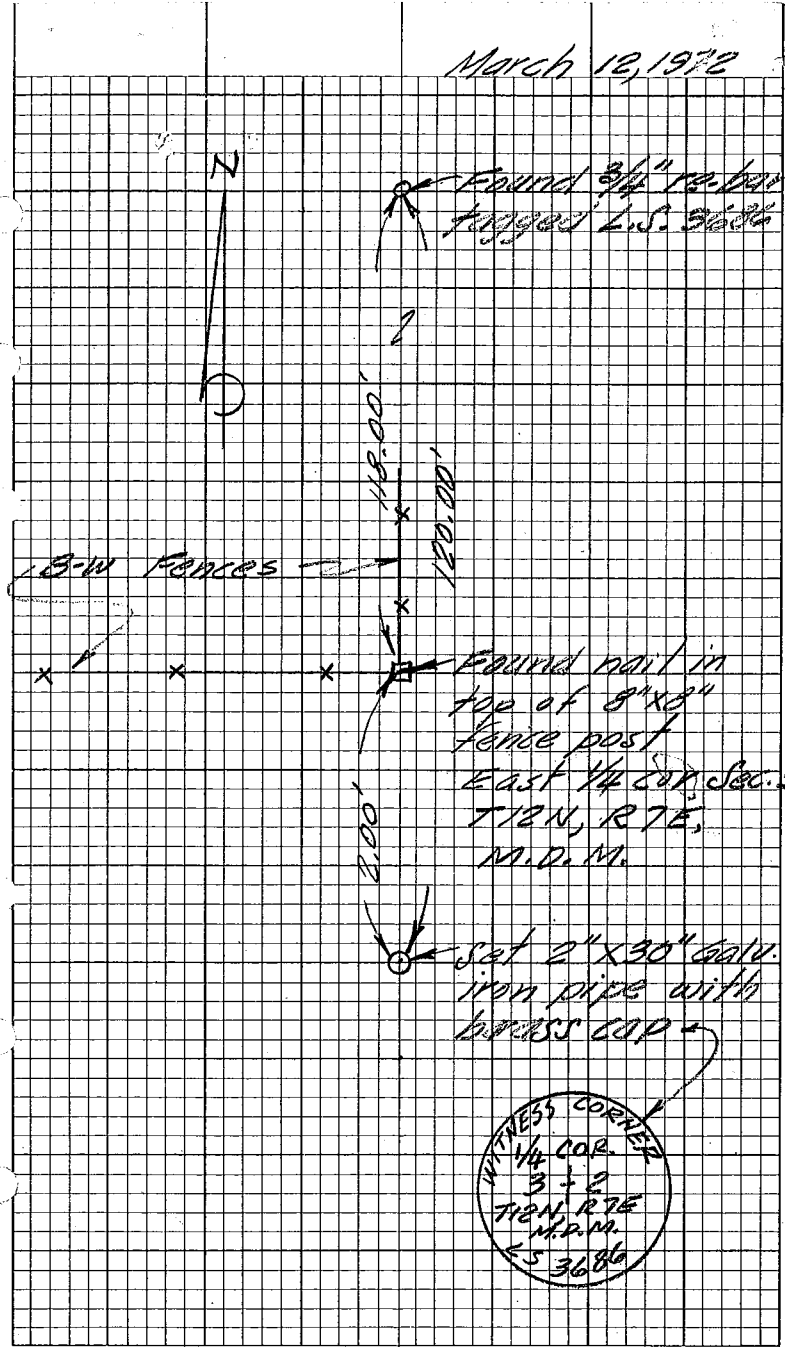
YES NO

BOOK 1 CORNER RECORDS, PAGE 1

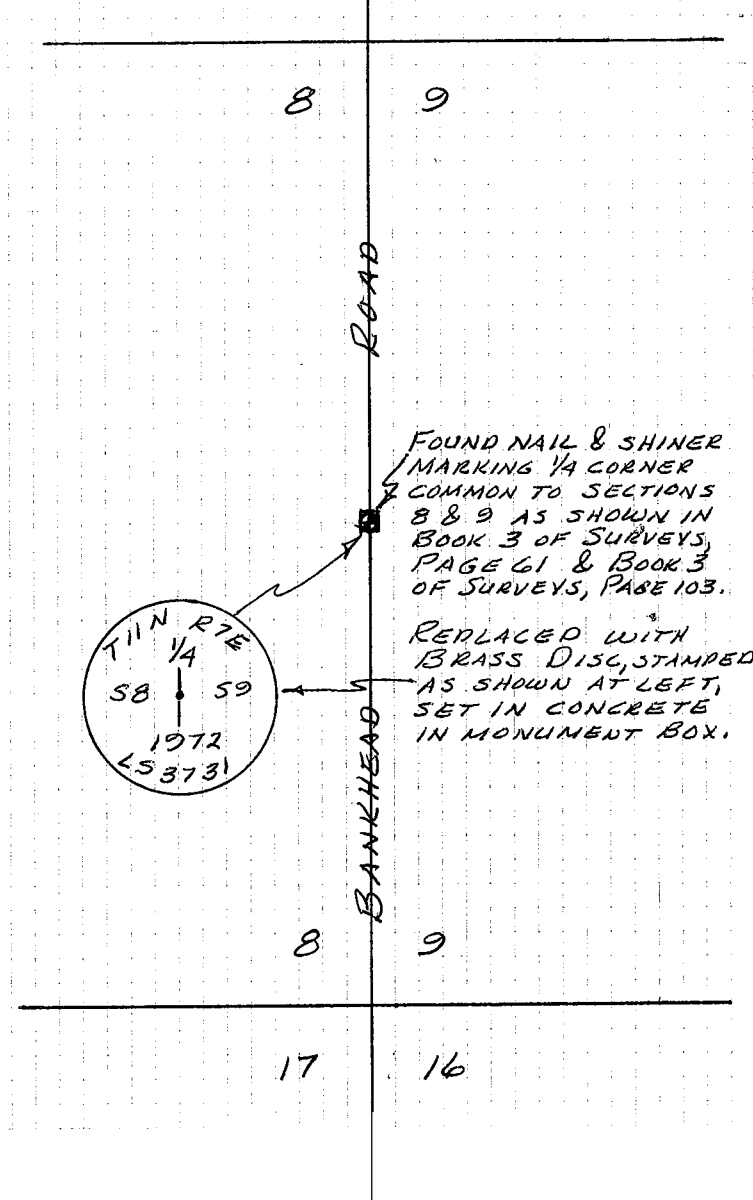
I hereby certify that the witness corner monument to the 1/4 corner common to Sections 3 & 2, T12N, R7E, M.D.M. as shown in these field notes was set by me on March 12, 1972 at the request of Everett E. Thorne.

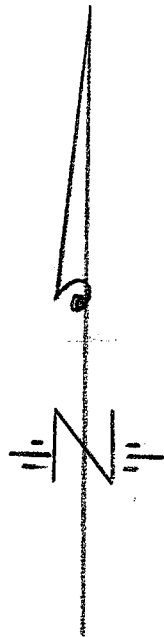


Raymond Jacobsen
2956
19-1972



J. DAVID STURDIVANT
9/23/72
1/4 CORNER COMMON TO SECTIONS 8 & 9
T. 11 N., R. 7 E., M. D. B. & M.
PLACER COUNTY CALIFORNIA





See B-35/104 P.C.R.

Scribed 15" Tam. Pine
as shown

S
20
T
17
N
R
15
E
BT

N. 53° W
54.7

Fd 16" Tam. Pine
Tagged "6-11-59 TBN"

N 44° E
96.0

Fd. Fir Stump with
Tree down Scribed U.S.
Orig. B. T.

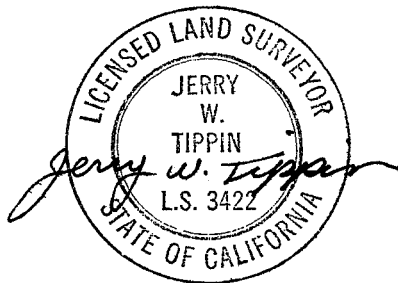
N. 60° E
79.0

Fd 3/4" Bolt with 1 1/2" Sq. Head
in rock mound - Accepted as
Sec. Cor - Replaced with 2" x
30" G.I.P. with 2" Bronz Cap
marked L.S. 3422
T.17N., R.15E.

S. 35° E
106.0

520 321
529 528
1971

Fd. 72" S. Pine
Scribed "528"
R.15E. Orig. B.T.



W.O.: 7006.26

SCALE: 1" = 30'

DR.:

CK.:

DATE: 2-14-72

RAYMOND VAIL & ASSOCIATES
OF LAKE TAHOE

ENGINEERS — PLANNERS — SURVEYORS

P.O. BOX 828 Phone (916) 583-3417

TAHOE CITY, CALIFORNIA

Re-Monumentation
of
S.E. Sec. Cor. Sec 20,
T.17N., R.15E. M.D.M.